

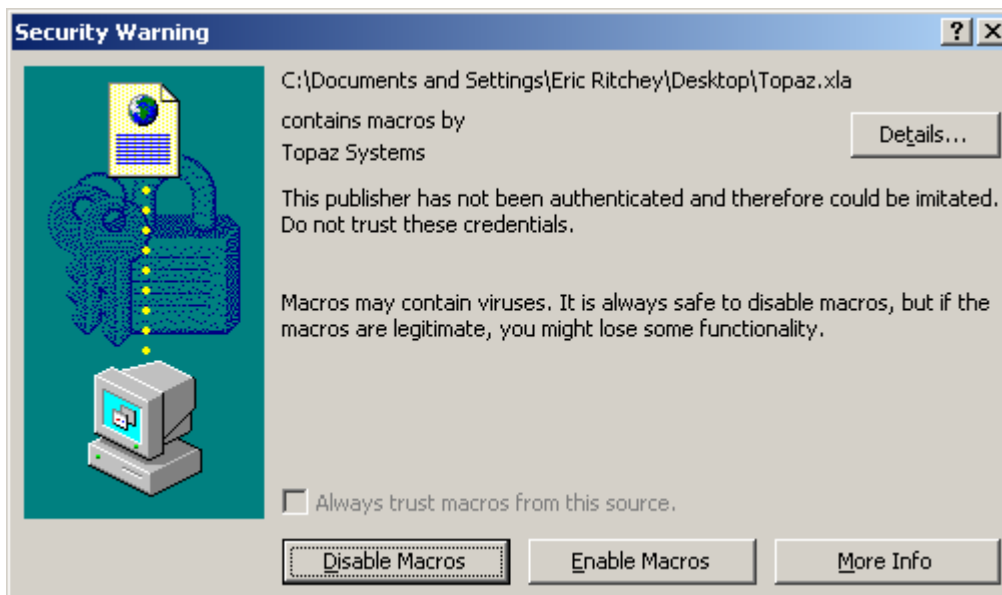
Topaz Systems, Inc. Signed Excel How-To

Topaz Systems, Inc.
650 Cochran Street, Unit 6
Simi Valley, CA, 93065
©1995-2007, all rights reserved, US patent 6,307,955, and pending

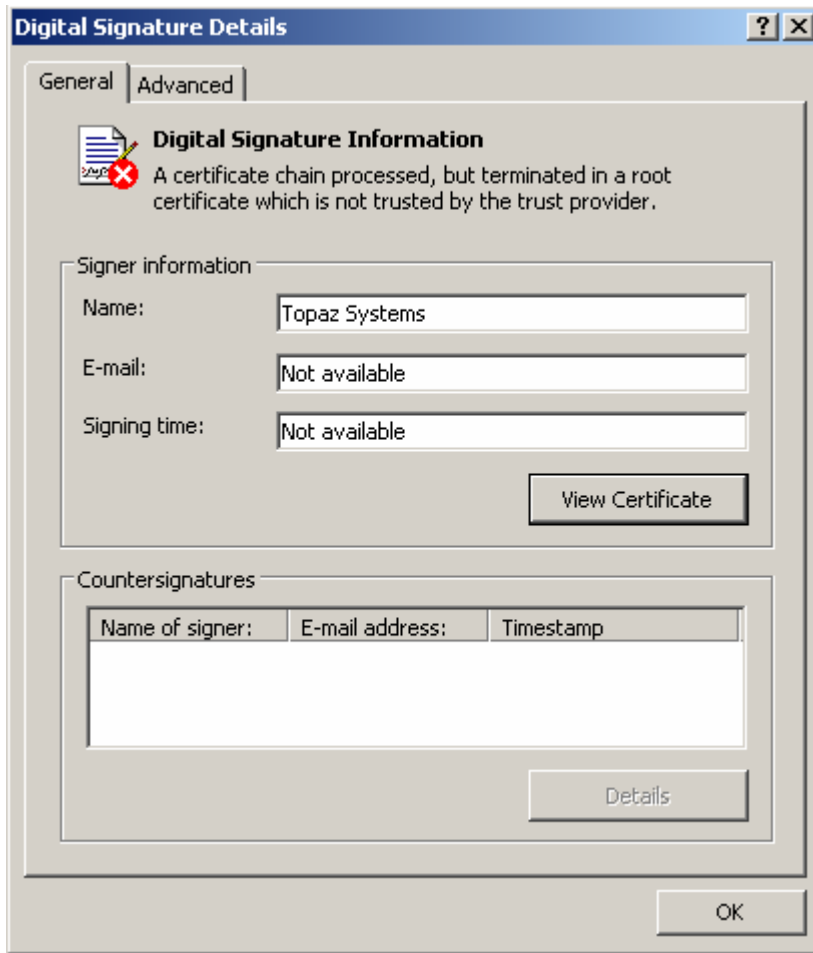
www.topazsystems.com
tech support: 805 520-8286
support@topazsystems.com

For users of Excel, Topaz offers a signed version of their office plug-ins. This document is meant to show users how to install and enable the Topaz Macros necessary for proper functionality of the Microsoft Excel plug-in for Microsoft Excel. Once installed, users will be able to retain a high Macro Security level while still enjoying the full functionality of the Topaz Excel Plug-In.

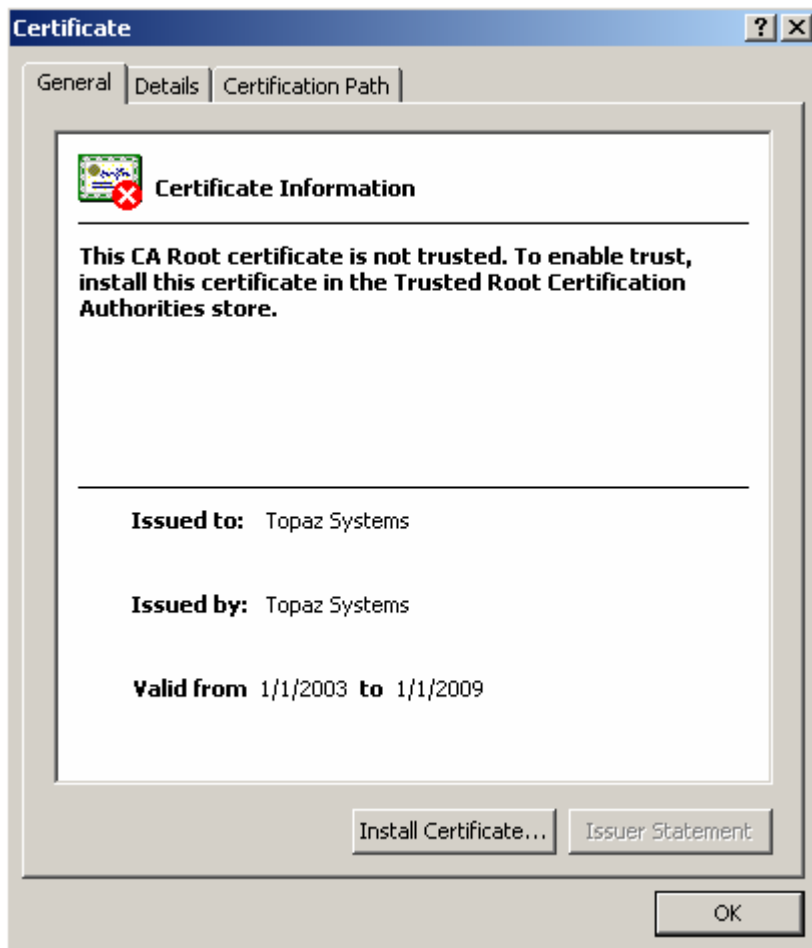
To begin, go to <http://www.topazsystems.com/Software/topazmsofficepluginsigned.exe> to download the new signed version of the Microsoft plug-ins. Once the new version of the plug-in is installed, begin by opening Excel. When Excel opens a window will be generated regarding Macros.



At this point, the user is unable to enable the macros. To accomplish this, start by clicking the 'Details...' button. This will open the 'Digital Signature Details' window.



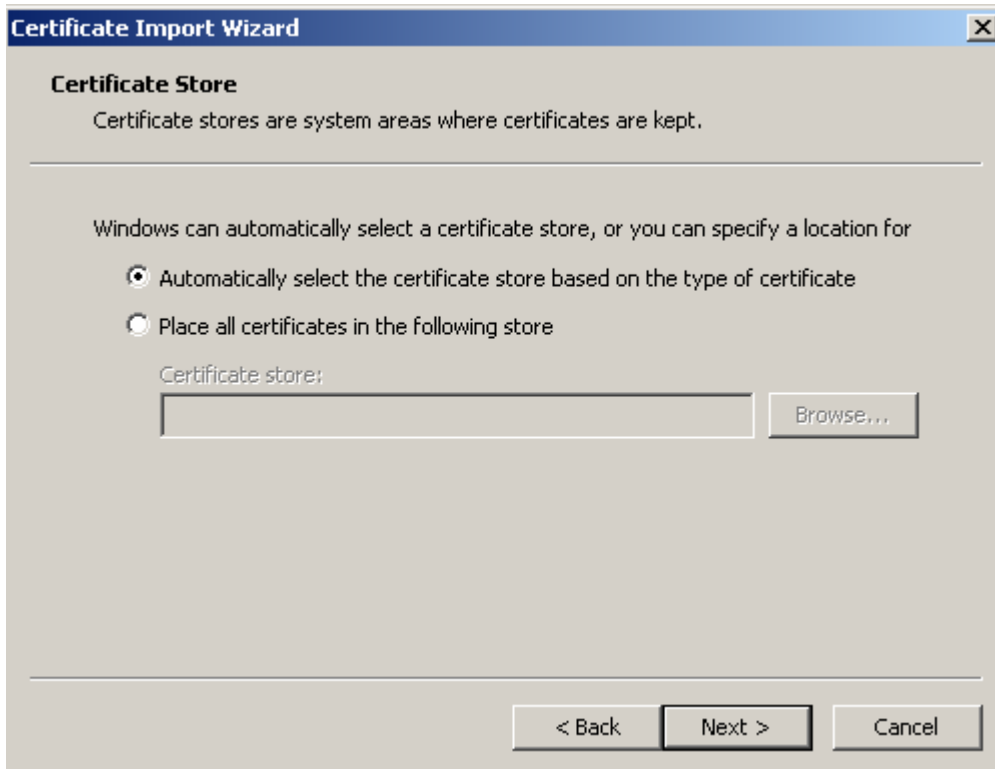
From this window click the 'View Certificate' button. This will open the 'Certificate' window.



From this window click the ‘Install Certificate...’ button. This will open the ‘Certificate Import Wizard.’ This will take users through the process of importing the certificate in order to enable the Topaz Macros necessary for proper functionality.



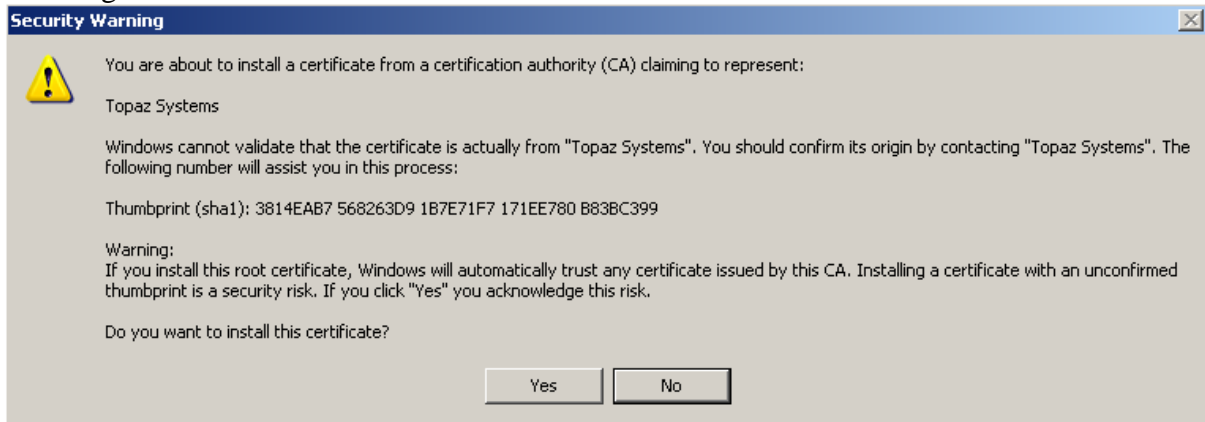
From the first screen simply click 'Next' to continue. From the following window choose to Automatically select the certificate store based on the type of certificate.



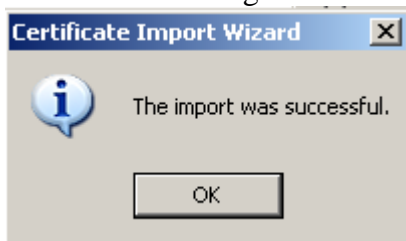
Click 'Next' to continue. The next window will display the choices made previously.



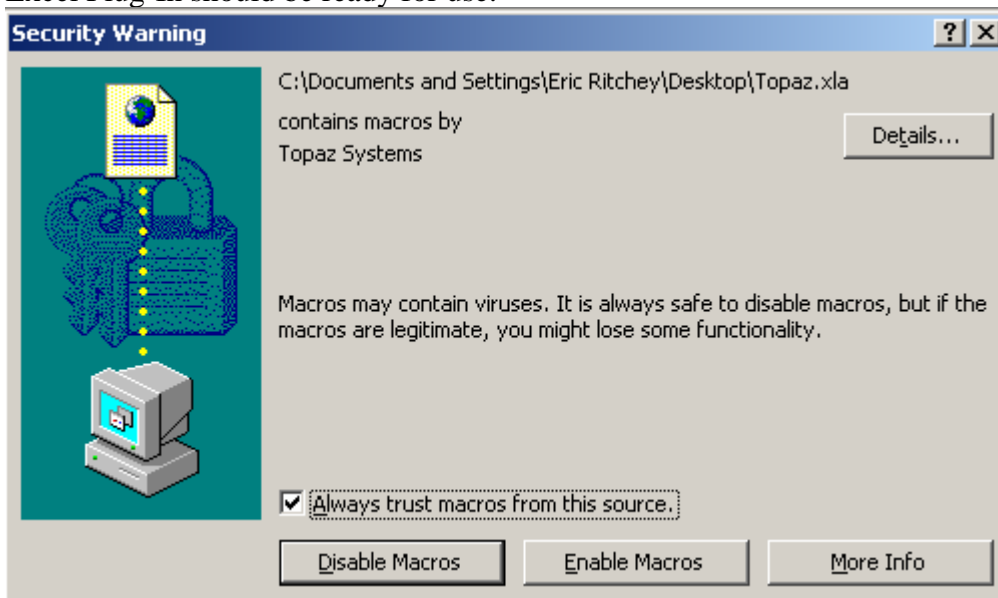
Click 'Finish' to complete importing the certificate. This will then generate a 'Security Warning' window.



Click 'Yes' to install the certificate that was imported. That will generate a confirmation window confirming a successful import.



Click 'OK' to continue. When the user returns to Microsoft Excel the 'Security Warning' window will once again appear, except this time the user will be able to check 'Always trust macros from this publisher' and then click 'Enable Macros'. Once that is complete the Topaz Excel Plug-In should be ready for use.



For more information regarding products and support
Email: support@topazsystems.com
Phone: (805) 520-8286

www.topazsystems.com
650 Cochran Street, Unit 6, Simi Valley, CA, USA, 93065
Phone: 805 520-8282; Fax: 805 520-0867