



How-To Guide

SigPlus Adjust

Copyright © Topaz Systems Inc. All rights reserved.

For Topaz Systems, Inc. trademarks and patents, visit www.topazsystems.com/legal.

Table of Contents

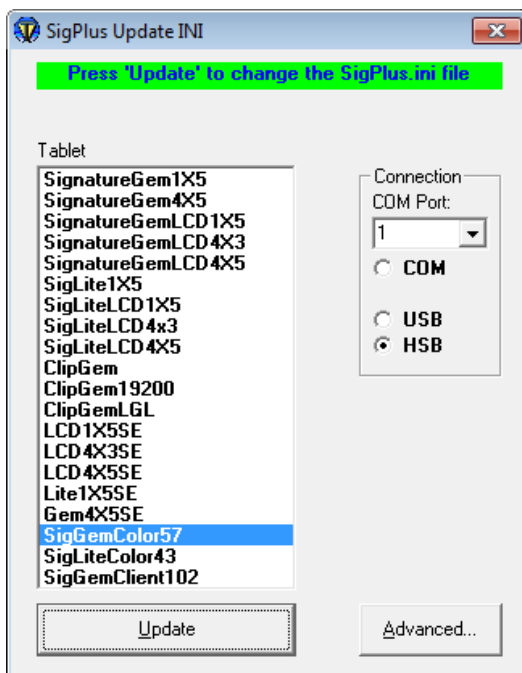
Overview.....	3
Using SigPlus Adjust	3

Overview

SigPlus Adjust is a tool that offers an easy, user-friendly way to update the .INI files of SigPlus and SigPlus plug-ins. Using SigPlus Adjust physically alters the SigPlus .INI File and, as such, after updating these configurations, the user will need to reopen the application or plug-in they were using to load the updated SigPlus settings.

Using SigPlus Adjust

Opening SigPlus Adjust opens the “SigPlus Update INI” window with the current .INI settings highlighted already.

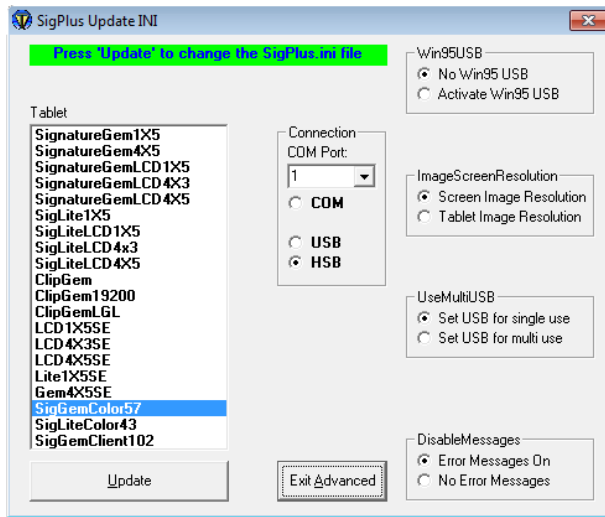


In the “SigPlus Update INI” window, there are many options to successfully set up your signature capture tablet. In the “Tablet” menu, there is a list of Topaz signature tablets; choose the tablet you will be using (i.e. SignatureGemLCD1X5). Next, choose of what connection the tablet will be making use. It is important to note that though both USB and HSB tablets make use of a USB connection, they are not interchangeable. The HSB tablets (ending in –HSB or –HSB-R) use a Microsoft HID driver for connectivity, whereas the USB models (ending in –USB) do not.

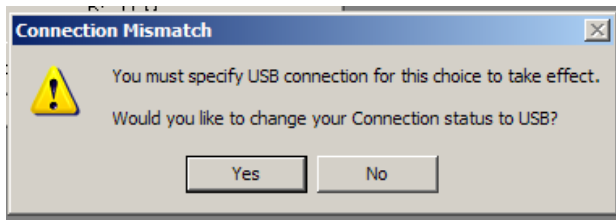
If you are not sure which model you have, check the model number on the back of the tablet. In most instances, this will configure SigPlus and its plug-ins for use with the user’s tablet. In addition to the tablet and connection settings, clicking the “Advanced” button will open a menu with more options.

1. Win95USB

This setting is for users who are using Windows 95 with a USB signature tablet. Activating Win95USB will configure SigPlus for use in Windows 95 with a USB tablet.



If you have not chosen USB as your connection, Activating Win95USB will cause an error message prompting you to change your connection setting.



2. ImageScreenResolution

This setting is used for setting at what resolution the signature image will be displayed. By default, these images are written out at screen resolution (whatever resolution the screen is; typically around 96 dpi or so). This is the "Screen Image Resolution" option. If desired, the user can specify the resolution at which images are written out by choosing "Tablet Image Resolution". Now, whatever the developer set (in code) for the "TabletResolution" property will be the resolution at which the image is written out, ie: TabletResolution=300 will result in the image getting written out (when WriteImageFile() is called) at 300 dpi rather than the screen resolution, which is always fixed. This is a setting that is for developer's use.

3. UseMultiUSB

This sets the USB port for use with a single device or for multiple devices being used simultaneously, but will only work if the application in use has implemented the multi-USB functionality. The user should only set "UseMultiUSB" for multi-use if their technical support group (from their own company or software vendor) tells them it is needed.

4. DisableMessages

This sets SigPlus to either display a notification when an error occurs or not.

Once the proper settings have been chosen, click the “Update” button. A message will appear at the top of the window if the update has been successful.

Now that the SigPlus.INI file has been updated, close and reopen any plug-ins or applications that were open to load the new settings.