

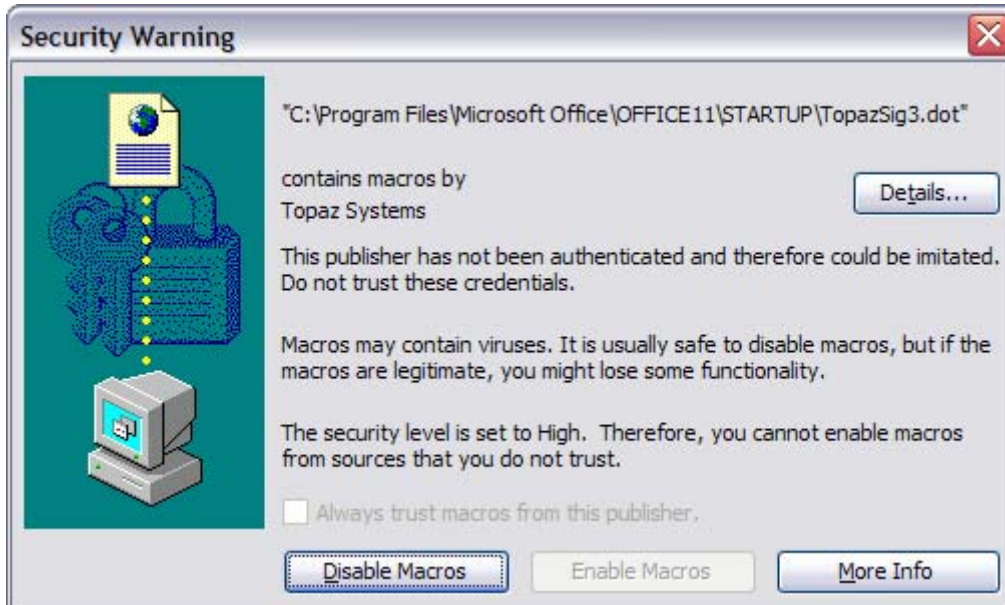
Topaz Systems, Inc.
Signed Word Plug-In Certificate Import How-To
RevA, G5

Topaz Systems, Inc.
650 Cochran Street, Unit 6
Simi Valley, CA, 93065
©1995-2005, all rights reserved, US patent 6,307,955, and pending

www.topazsystems.com
tech support: 805 520-8286
support@topazsystems.com

For users of word, Topaz now offers a signed version of their office plug-ins. This document is meant to show users how to install and enable the Topaz Macros necessary for proper functionality of the Microsoft Word plug-in for Microsoft Word 2003. Once installed, users will be able to retain a high Macro Security level while still enjoying the full functionality of the Topaz Word Plug-In.

To begin, go to <http://www.topazsystems.com/Software/topazmsofficepluginssigned.exe> to download the new signed version of the Microsoft plug-ins. Once the new version of the plug-in is installed, begin by opening Word. When Word opens a window will be generated regarding Macros.

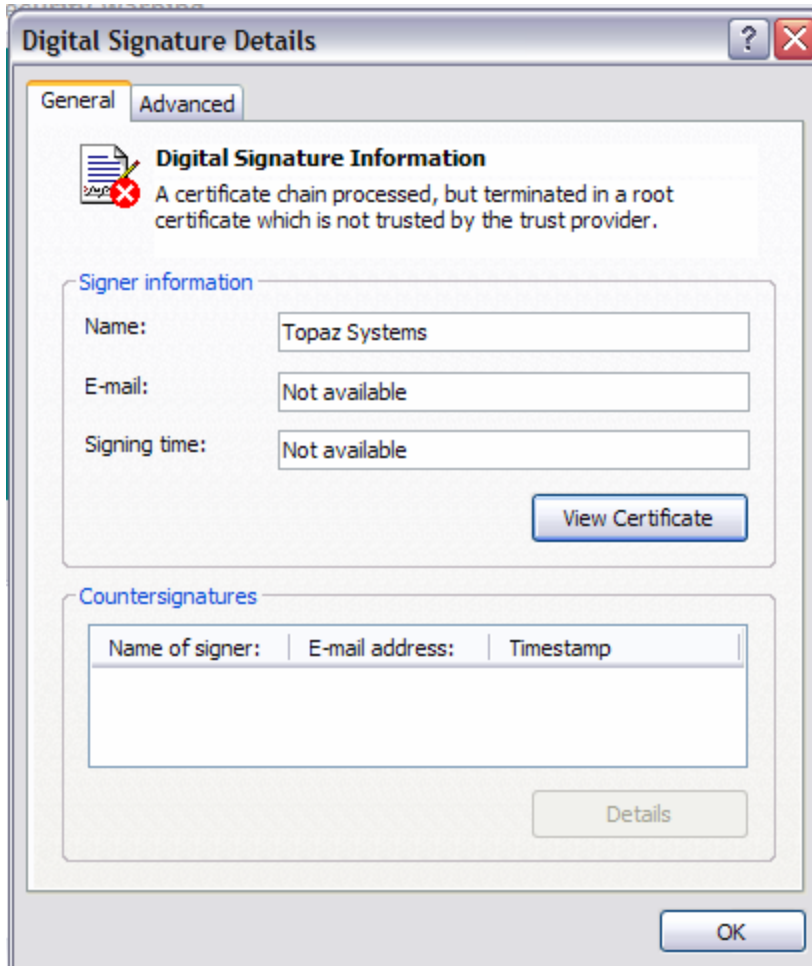


At this point, the user is unable to enable the macros. To accomplish this, start by clicking the 'Details...' button. This will open the 'Digital Signature Details' window.

Topaz Systems, Inc.
Signed Word Plug-In Certificate Import How-To
RevA, G5

Topaz Systems, Inc.
650 Cochran Street, Unit 6
Simi Valley, CA, 93065
©1995-2005, all rights reserved, US patent 6,307,955, and pending

www.topazsystems.com
tech support: 805 520-8286
support@topazsystems.com

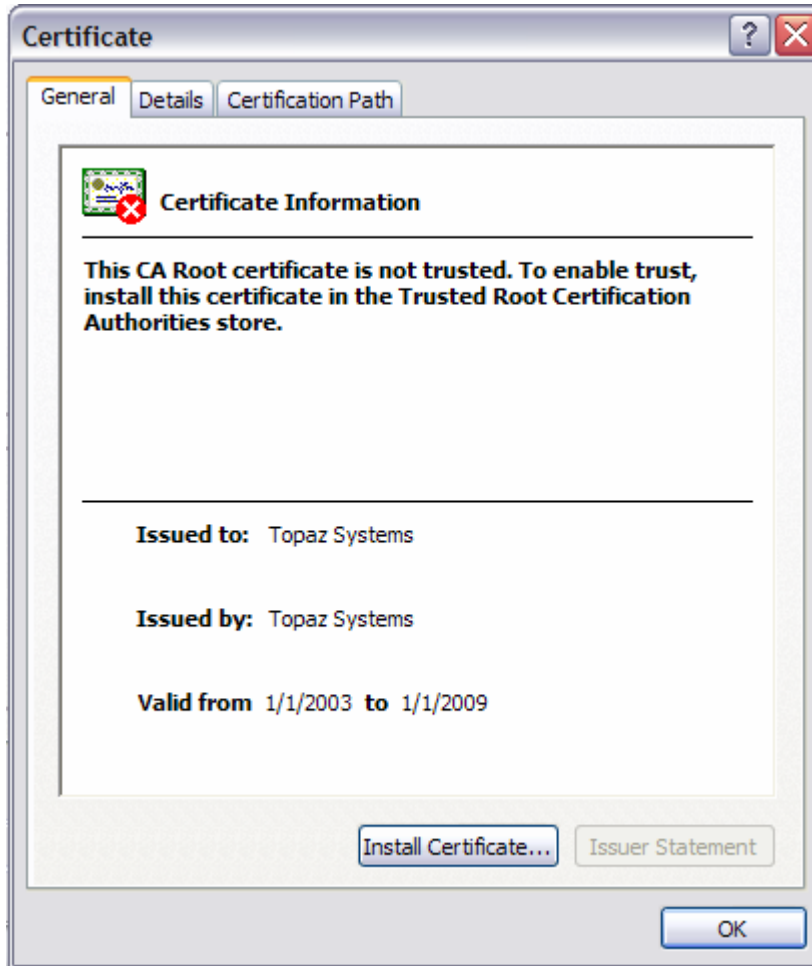


From this window click the 'View Certificate' button. This will open the 'Certificate' window.

Topaz Systems, Inc.
Signed Word Plug-In Certificate Import How-To
RevA, G5

Topaz Systems, Inc.
650 Cochran Street, Unit 6
Simi Valley, CA, 93065
©1995-2005, all rights reserved, US patent 6,307,955, and pending

www.topazsystems.com
tech support: 805 520-8286
support@topazsystems.com



From this window click the ‘Install Certificate...’ button. This will open the ‘Certificate Import Wizard’. This will take users through the process of importing the certificate in order to enable the Topaz Macros necessary for proper functionality.

Topaz Systems, Inc.
Signed Word Plug-In Certificate Import How-To
RevA, G5

Topaz Systems, Inc.
650 Cochran Street, Unit 6
Simi Valley, CA, 93065
©1995-2005, all rights reserved, US patent 6,307,955, and pending

www.topazsystems.com
tech support: 805 520-8286
support@topazsystems.com

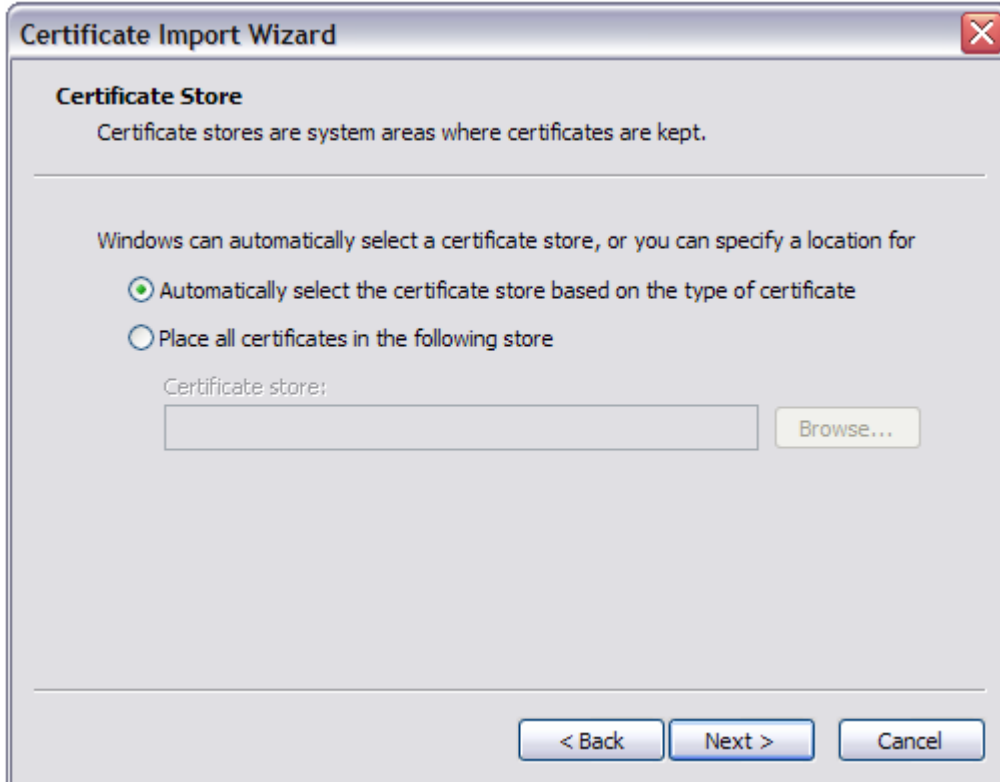


From the first screen simply click 'Next' to continue. From the following window choose to Automatically select the certificate store based on the type of certificate.

Topaz Systems, Inc.
Signed Word Plug-In Certificate Import How-To
RevA, G5

Topaz Systems, Inc.
650 Cochran Street, Unit 6
Simi Valley, CA, 93065
©1995-2005, all rights reserved, US patent 6,307,955, and pending

www.topazsystems.com
tech support: 805 520-8286
support@topazsystems.com

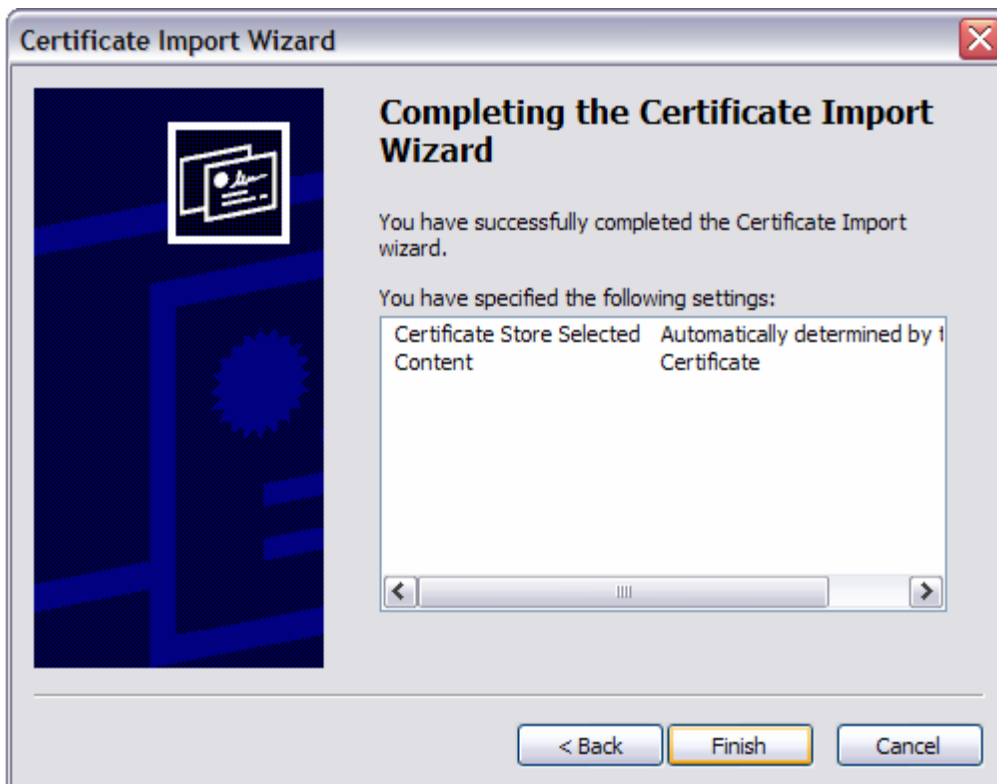


Click 'Next' to continue. The next window will display the choices made previously.

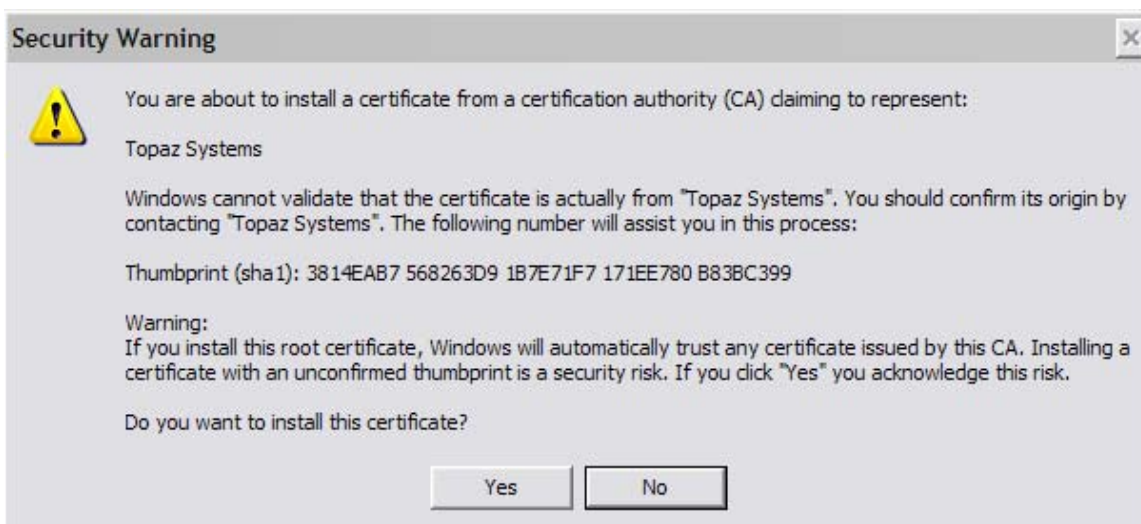
Topaz Systems, Inc.
Signed Word Plug-In Certificate Import How-To
RevA, G5

Topaz Systems, Inc.
650 Cochran Street, Unit 6
Simi Valley, CA, 93065
©1995-2005, all rights reserved, US patent 6,307,955, and pending

www.topazsystems.com
tech support: 805 520-8286
support@topazsystems.com



Click 'Finish' to complete importing the certificate. This will then generate a 'Security Warning' window.

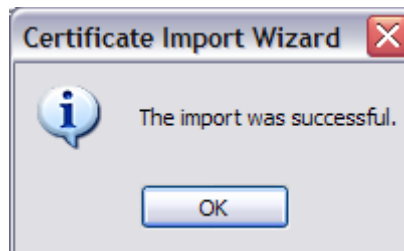


Topaz Systems, Inc.
Signed Word Plug-In Certificate Import How-To
RevA, G5

Topaz Systems, Inc.
650 Cochran Street, Unit 6
Simi Valley, CA, 93065
©1995-2005, all rights reserved, US patent 6,307,955, and pending

www.topazsystems.com
tech support: 805 520-8286
support@topazsystems.com

Click 'Yes' to install the certificate that was imported. That will generate a confirmation window confirming a successful import.



Click 'OK' to continue. When the user returns to Microsoft Word the 'Security Warning' window will once again appear, except this time the user will be able to check 'Always trust macros from this publisher' and then click 'Enable Macros'. Once that is complete the Topaz Word Plug-In should be ready for use.



For more information regarding Topaz products and support please go to www.topazsystems.com or email support@topazsystems.com