



# User Installation Guide

## Topaz SigIDExtLite

Designed for use in Chrome and Firefox  
Browser Extension frameworks.

**Version 1.1.4.0**

Last Update: January 18, 2019

Copyright © 2019 Topaz Systems Inc. All rights reserved.

For Topaz Systems, Inc. trademarks and patents, visit [www.topazsystems.com/legal](http://www.topazsystems.com/legal).

## Table of Contents

<b>1.0 – Introduction</b> .....	<b>3</b>
<b>2.0 – Operating Systems Supported</b> .....	<b>3</b>
<b>3.0 – Installation Steps</b> .....	<b>3</b>
<b>3.1 – Chrome</b> .....	<b>3</b>
3.1.1 – <i>Install SigIDp1</i> .....	3
3.1.2 – <i>Install SigIDExtLite</i> .....	3
3.1.3 – <i>Install the Topaz SigIDExtLite Chrome Extension</i> .....	4
3.1.4 – <i>Run the Sample Web Page</i> .....	4
<b>3.2 – Firefox</b> .....	<b>5</b>
3.2.1 – <i>Install SigIDp1</i> .....	5
3.2.2 – <i>Install SigIDExtLite</i> .....	5
3.2.3 – <i>Run the Sample Web Page</i> .....	6

## 1.0 – Introduction

With SigIDExtLite, users can be enrolled and verified using fingerprint biometrics, and the captured fingerprint can be exported as an image in the Chrome and Firefox browsers.

## 2.0 – Operating Systems Supported

Topaz SigIDExtLite can be used with web pages running in the latest versions of the Chrome and Firefox browsers installed on Windows 7 and newer 32-bit and 64-bit operating systems. For 64-bit Windows operating systems, it is recommended to use the 32-bit Chrome and Firefox browser versions.

## 3.0 – Installation Steps

### 3.1 – Chrome

Using SigIDExtLite in Chrome requires three simple steps, as described below:

#### 3.1.1 – Install SigIDp1

Note: Be sure to install SigIDp1 directly from the link below.

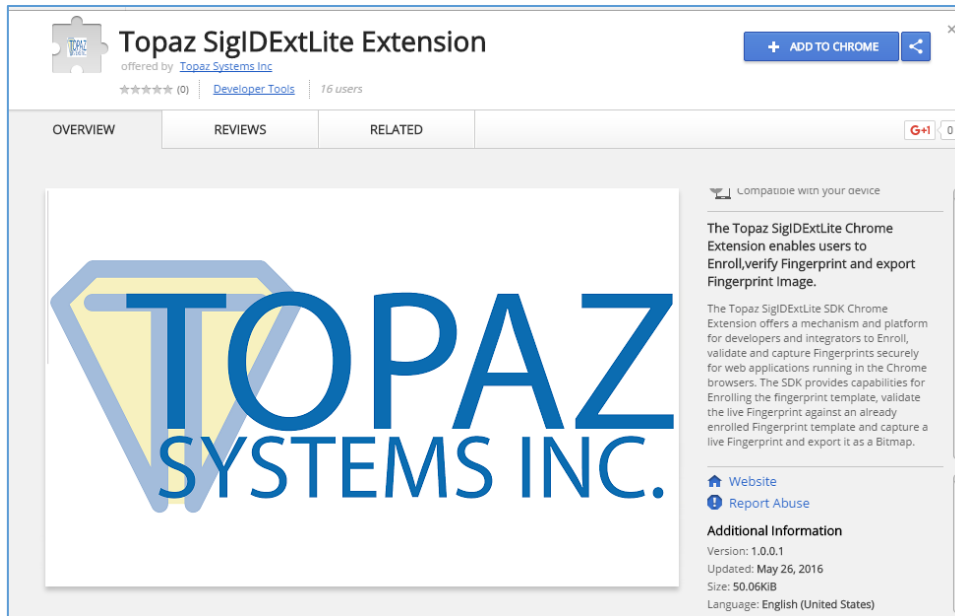
1. Download and install the SigIDp1 installer from the following link: [www.topazsystems.com/Software/sigidp1wp.exe](http://www.topazsystems.com/Software/sigidp1wp.exe). Right-click on the “SigIDp1WP.exe” installer, and choose “Run as Administrator”. Then, follow the steps in the installer.

#### 3.1.2 – Install SigIDExtLite

1. Download and save SigIDExtLite to your computer’s desktop from the following link: [www.topazsystems.com/Software/SigIDExtLite.exe](http://www.topazsystems.com/Software/SigIDExtLite.exe).
2. Right-click on the “SigIDExtLite.exe” installer, and choose “Run as Administrator”. Then, follow the steps in the installer.

### 3.1.3 – Install the Topaz SigIDExtLite Chrome Extension

1. Start the Chrome Browser, and go to the Topaz “SigIDExtLite” Extension page at: <https://chrome.google.com/webstore/detail/topaz-sigidextlite-extens/jdkekdbbdcjhhkddbojnlohjgejcebf>.
2. In the opened page, click on the “+ ADD TO CHROME” button displayed on the top right of the page (see the screenshot below).



3. Click on the “Add extension” button in the popped up confirmation dialog.

### 3.1.4 – Run the Sample Web Page

After installing the three required SigIDExtLite software and the Topaz signature pad is connected to the client desktop, launch Chrome and navigate to the following page: [www.topazsystems.com/sdks/sigidextlite.html](http://www.topazsystems.com/sdks/sigidextlite.html).

Click on the:

- “Enroll” button to enroll a fingerprint template
- “Validate” button to validate the captured fingerprint against an enrolled template
- “Bitmap” button to capture a fingerprint image in PNG format
- “LowRes Bitmap” to capture a low-resolution image in PNG format

Each of the above buttons will display a fingerprint capture dialog, and the dialog position can be controlled using the FP Window Position, X and Y user input fields. “Validate Retry Limit” sets the number of retries to be allowed during fingerprint validation.

### 3.2 – Firefox

Using SigIDExtLite in Firefox requires two simple steps, as described below:

#### 3.2.1 – Install SigIDp1

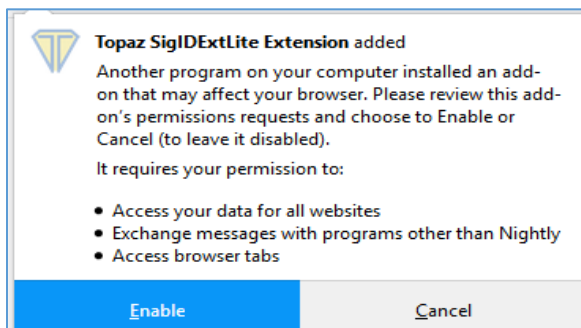
Note: Be sure to install SigIDp1 directly from the link below.

1. Download and install the SigIDp1 installer from the following link: [www.topazsystems.com/Software/sigidp1wp.exe](http://www.topazsystems.com/Software/sigidp1wp.exe). Right-click on the “SigIDp1WP.exe” installer, and choose “Run as Administrator”. Then, follow the steps in the installer.

#### 3.2.2 – Install SigIDExtLite

Note: If applicable, remove any previous version of the SigIDExtLite Firefox extension from the “Firefox Add-ons Manager” page under the “Extension” section.

1. Download and save SigIDExtLite to your computer’s desktop from the following link: [www.topazsystems.com/Software/SigIDExtLite.exe](http://www.topazsystems.com/Software/SigIDExtLite.exe).
2. Right-click on the “SigIDExtLite.exe” installer, and choose “Run as Administrator”. Then, follow the steps in the installer.
3. Start the Firefox browser to complete the installation of the Firefox Extension. The browser prompts the user to allow the extension installation. Click on the “Enable” button to complete the installation.



## Note:

- To see the version of the SDK extension, click on “More”.
- Step 2 has to be performed for all the Windows login accounts by logging into Windows and starting the Firefox browser.
- In some cases, the Firefox browser may not show the prompt mentioned in step 2; in those cases, the extension has to be manually enabled from the Firefox Add-ons manager page by typing in about: addons in the address bar, then going to the Extensions section and clicking on the ‘Enable’ button next to ‘Topaz SigIDExtLite Extension’ and restarting the browser.

### **3.2.3 – Run the Sample Web Page**

After installing the three required SigIDExtLite software and the Topaz signature pad is connected to the client desktop, launch Firefox and navigate to the following page: [www.topazsystems.com/sdks/sigidextlite.html](http://www.topazsystems.com/sdks/sigidextlite.html).

Click on the:

- “Enroll” button to enroll a fingerprint template
- “Validate” button to validate the captured fingerprint against an enrolled template
- “Bitmap” button to capture a fingerprint image in PNG format
- “LowRes Bitmap” to capture a low-resolution image in PNG format

Each of the above buttons will display a fingerprint capture dialog, and the dialog position can be controlled using the FP Window Position, X and Y user input fields. “Validate Retry Limit” sets the number of retries to be allowed during fingerprint validation.