



# Browser Extension GPO Deployment Guide

SigIDExtLite

## Contents

<b>Google Chrome Extension GPO Deployment.....</b>	<b>2</b>
Prepare Group Policy Editor with Chrome’s Policy Template .....	2
Setup Google Chrome with SigIDExtLite’s Chrome Extension .....	2
<b>Edge Chromium Extension GPO Deployment.....</b>	<b>4</b>
Prepare Group Policy Editor with Edge Chromium’s Policy Template.....	4
Setup Edge Chromium with SigIDExtLite’s Chrome Extension .....	4
<b>Additional Information .....</b>	<b>5</b>



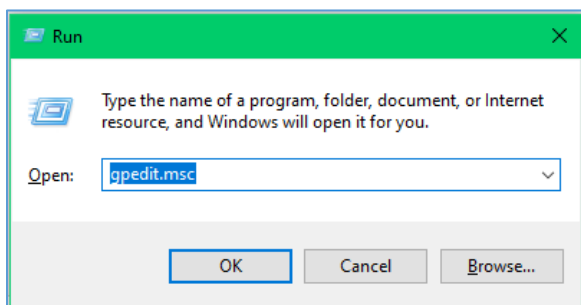
## Google Chrome Extension GPO Deployment

### Prepare Group Policy Editor with Chrome's Policy Template

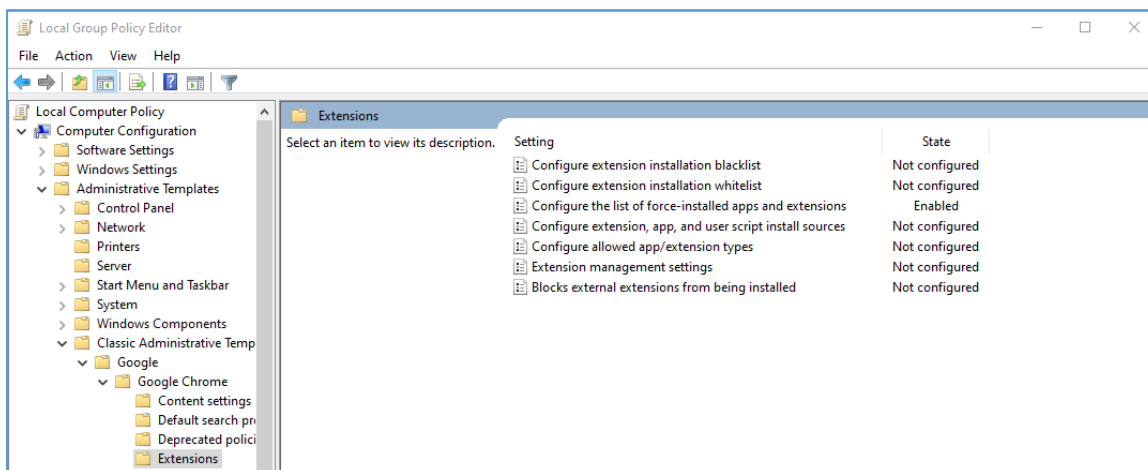
1. Go to <https://support.google.com/chrome/a/answer/187202>.
2. Follow the steps under "Install and configure Chrome policy templates" for your OS.

### Setup Google Chrome with SigIDExtLite's Chrome Extension

1. After installing and configuring the Chrome policy templates in GPO, open GPO by selecting the "Windows Key + R", typing "gpedit.msc", and then selecting the "Enter" key.



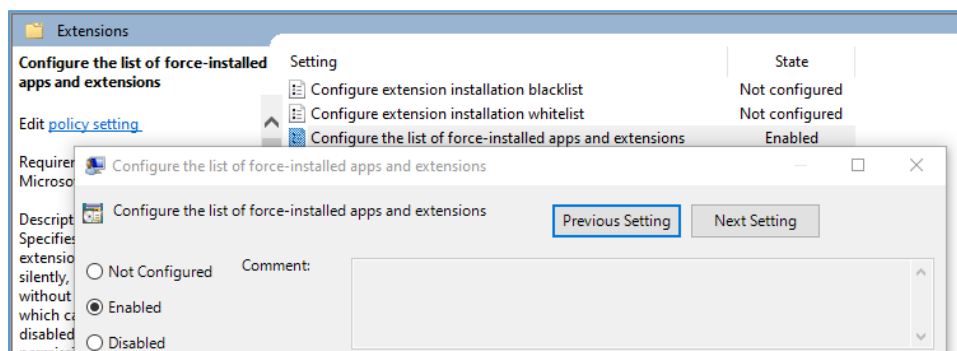
2. Under "Computer Configuration", go to "Administrative Templates" → "Classic Administrative Templates" → "Google" → "Google Chrome" → "Extensions".



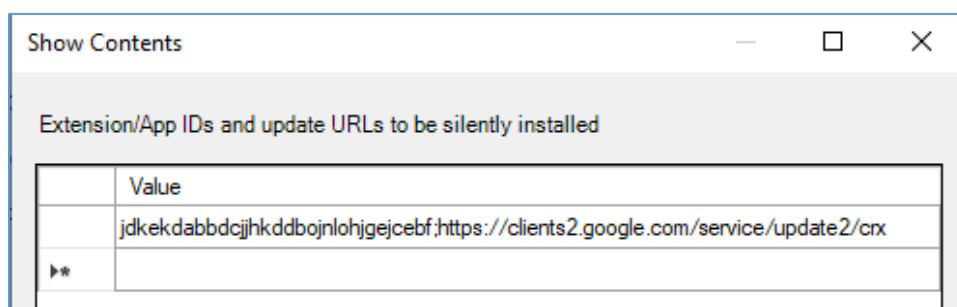
3. In "Extensions", select the "Configure the list of force-installed apps and extensions" setting.



4. In the “Configure the list of force-installed apps and extensions” window, select the “Enabled” radio button.



5. In the “Configure the list of force-installed apps and extensions” window, select the “Show...” button under “Extensions/App IDs and update URLs to be silently installed”.
6. In the “Show Contents” window, add the following value and click “OK”:  
jdkekdabbdcjhhkddbojnlohjgejcebf;https://clients2.google.com/service/update2/crx



7. Select the “Apply” button and exit out of the Local Group Policy Editor.
8. Restart Chrome.
9. In Chrome, go to Chrome://extensions, and confirm that the SigIDExtLite extension with ID jdkekdabbdcjhhkddbojnlohjgejcebf was added.



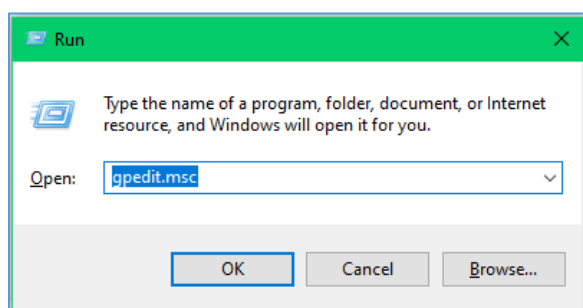
## Edge Chromium Extension GPO Deployment

### Prepare Group Policy Editor with Edge Chromium's Policy Template

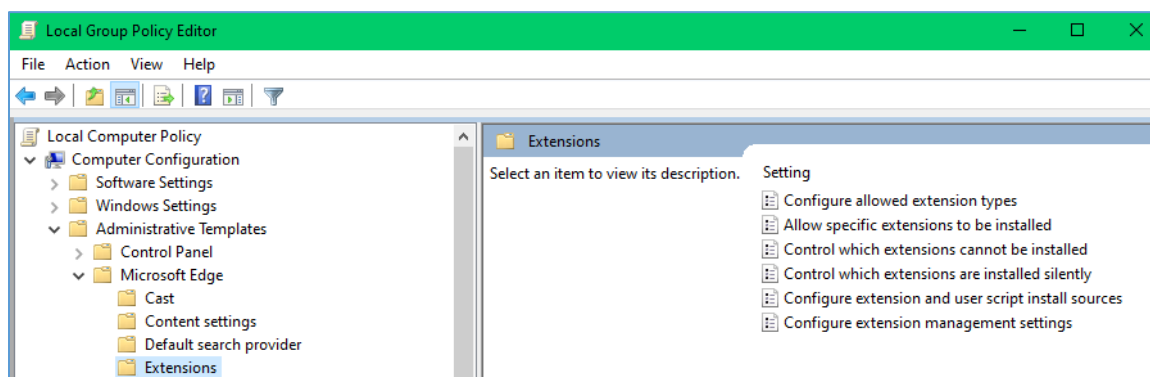
1. Go to <https://docs.microsoft.com/en-us/DeployEdge/configure-microsoft-edge>.
2. Follow the steps under "Configure policy settings on Windows".

### Setup Edge Chromium with SigIDExtLite's Chrome Extension

1. After installing and configuring the Edge policy templates in GPO, open GPO by selecting the "Windows Key + R", typing "gpedit.msc", and then selecting the "Enter" key.



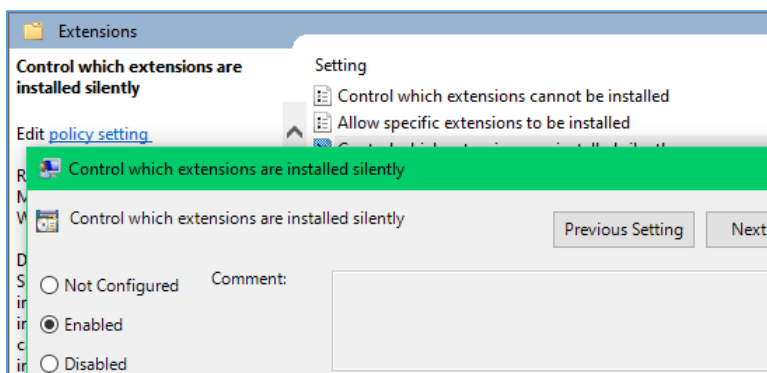
2. Under "Computer Configuration", go to "Administrative Templates" → "Classic Administrative Templates" → "Microsoft Edge" → "Extensions".



3. In "Extensions", select the "Control which extensions are installed silently" setting.



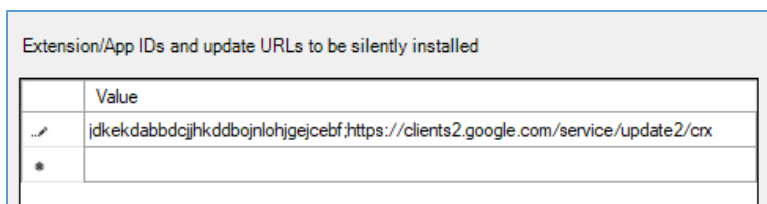
- In the “Control which extensions are installed silently” window, select the “Enabled” radio button.



- In the “Control which extensions are installed silently” window, select the “Show...” button under “Extensions/App IDs and update URLs to be silently installed”.

- In the “Show Contents” window, add the following value and click “OK”:

`jdkekdabbdcjkhkddbojnlohjgejcebf;https://clients2.google.com/service/update2/crx`



- Select the “Apply” button and exit out of the Local Group Policy Editor.
- Restart Edge Chromium.
- In Edge Chromium, go to `edge://extensions/`, and confirm that the SigIDExtLite extension with ID `jdkekdabbdcjkhkddbojnlohjgejcebf` was added (Developer mode may need to be toggled on to see the ID of the extension).

## Additional Information

If Native Messaging Host application blacklisting is enabled to blacklist all Native Messaging Host applications, then whitelist the Topaz Native Messaging application by adding the “com.topaz.sigidextlite.win” to the GPO Native Messaging Host Whitelisting for the specified browsers GPO settings.