



# How-To Guide

BSB Pads in a Remote Environment

## Contents

<b>Detailed Steps for Setting up BSB Pads.....</b>	<b>2</b>
For Citrix Virtual Desktops (Server-Side Only).....	2
For Citrix Virtual Apps .....	3
For Use with a Remote Desktop Connection.....	5
Testing Your BSB Signature Pad .....	7



## Detailed Steps for Setting up BSB Pads

### For Citrix Virtual Desktops (Server-Side Only)

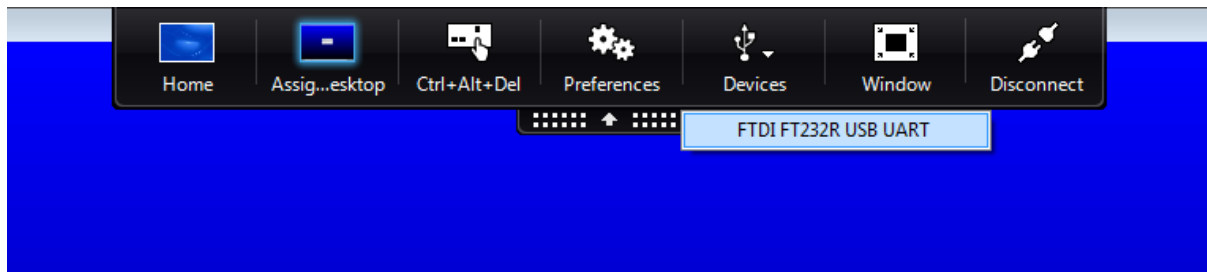
1. Please refer to this document from Citrix for implementing the USB redirection built into Citrix Virtual Desktops: [docs.citrix.com/en-us/citrix-virtual-apps-desktops/2402-ltsr/devices/usb-devices/configuration](https://docs.citrix.com/en-us/citrix-virtual-apps-desktops/2402-ltsr/devices/usb-devices/configuration).

2. The VID and PID for the Topaz 'BSB' signature pad device to use are:  
VID 0x0403 and PID 0x6001.

You will need to use these values as per the directions. Plug the signature pad in as part of this redirection.

3. Finally, download and run SigPlus BSB on your Citrix Desktops Server:  
[www.topazsystems.com/Software/sigplusbsb.exe](http://www.topazsystems.com/Software/sigplusbsb.exe).

After installation is complete, plug in the signature pad. Select "Devices" and "FTDI FT232R USB UART" from the list. You are now ready to sign.



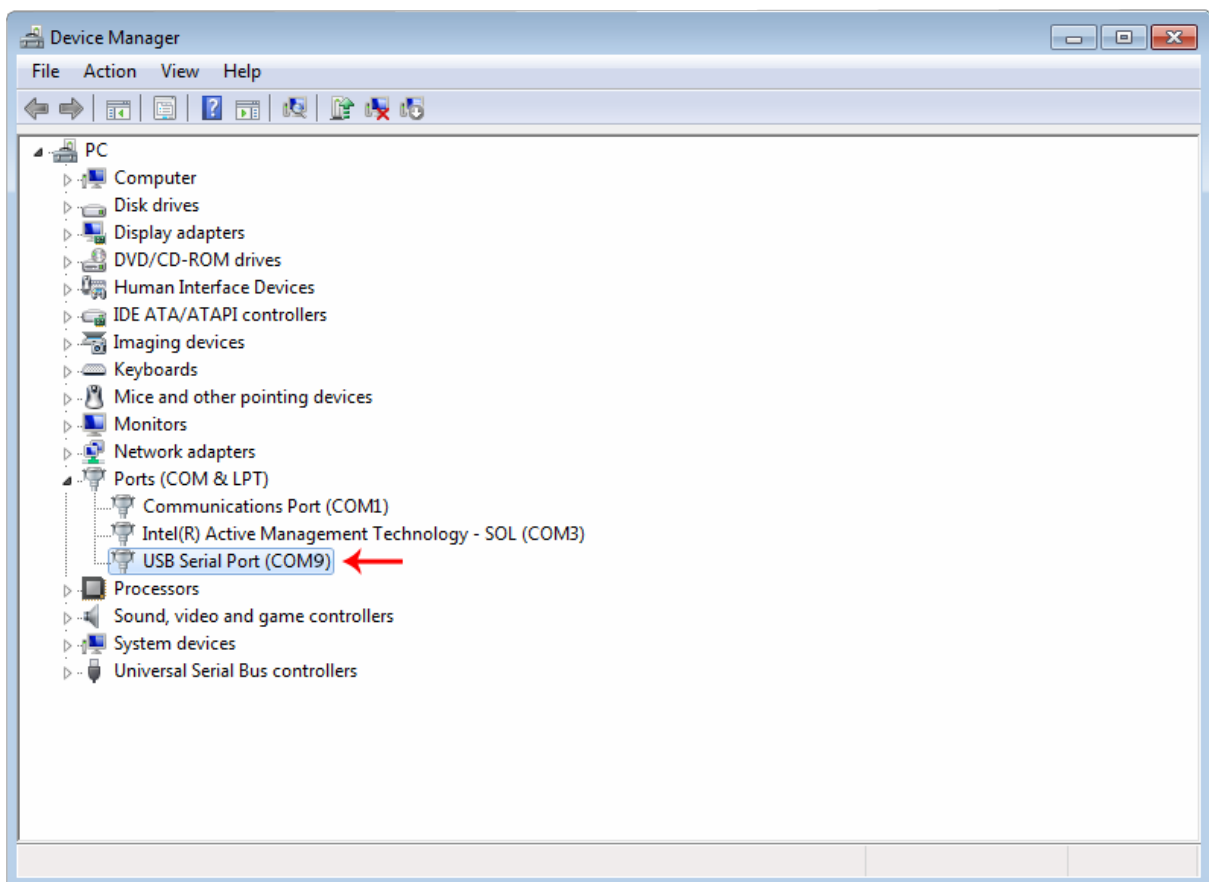


## For Citrix Virtual Apps

### Part 1: Client-Side Installation

1. Download/save SigPlus BSB to your local client computer/terminal:  
[www.topazsystems.com/software/sigplusbsb.exe](http://www.topazsystems.com/software/sigplusbsb.exe).
2. Right-click the "sigplusbsb.exe", and choose "Run as Administrator".
3. Follow the installer through, choosing the appropriate tablet model during install.
4. Click "Start", right-click on "Computer", and choose "Properties". Click "Device Manager" from the menu.
5. Expand the "Ports" section and locate the "USB Serial Port" entry, as shown below.

*Note what COM port was assigned to this device. This value will be required later in setup. In the example below, this is COM9.*





## *Part 2: Server-Side Installation*

1. Log into the server using an RDC as Administrator or an equivalent account.
2. Download and save SigPlus to your server: [www.topazsystems.com/Software/sigplus.exe](http://www.topazsystems.com/Software/sigplus.exe).
3. From a CMD line, type "Change user /install" to enter "Install mode". Install SigPlus.exe". Choose your tablet model during install and the corresponding server Com port number from steps outlined above. After installing, from CMD line, type "Change user /execute" or restart server to place server back into "Execute mode" before using the application.
4. Copy the "SigPlus.ini" from C:\Windows on the server and place it into the root of C:\ on the server. Then rename it to "SigPlusRoot.ini".
5. Please refer to this document from Citrix for COM port redirection procedures: <https://docs.citrix.com/en-us/citrix-virtual-apps-desktops/devices/serial-devices.html>.

**NOTE:** If you go the route of manually mapping your com port with the Net Use command, you will need to know the com port the pad was assigned in Part 1.

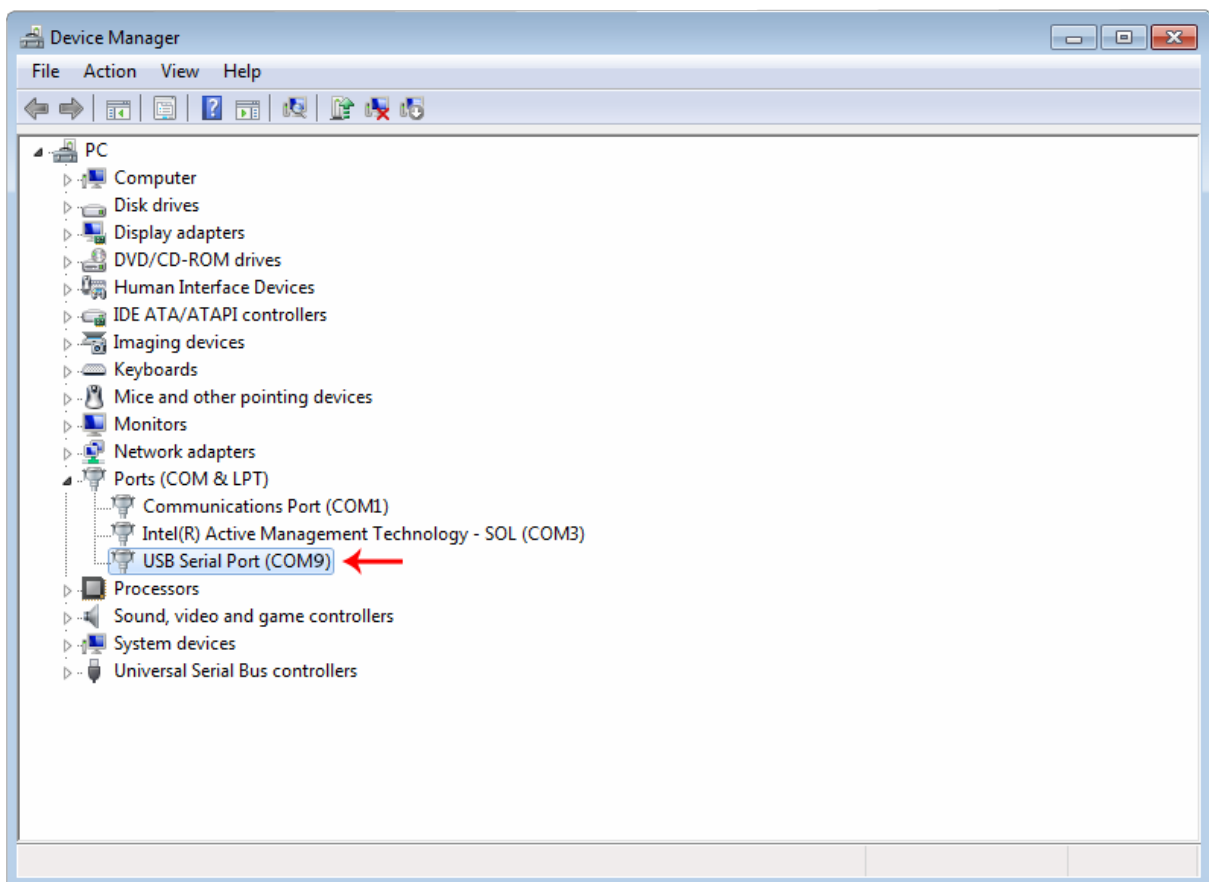


## For Use with a Remote Desktop Connection

### Part 1: Client-Side Installation

1. Download and save SigPlus BSB to your local client computer/terminal:  
[www.topazsystems.com/software/sigplusbsb.exe](http://www.topazsystems.com/software/sigplusbsb.exe).
2. Right-click the "sigplusbsb.exe" and choose "Run as Administrator".
3. Follow the installer through, choosing the appropriate tablet model during install.
4. Click "Start", right-click on "Computer", and choose "Properties". Click "Device Manager" from the menu.
5. Expand the "Ports" section and locate the "USB Serial Port" entry, as shown below.

*Note what COM port was assigned to this device. This value will be required later in setup. In the example below, this is COM9.*





## Part 2: Server-Side Installation

1. Log into the server using an RDC as Administrator or an equivalent account.
2. Download and save SigPlus to your server: [www.topazsystems.com/Software/sigplus.exe](http://www.topazsystems.com/Software/sigplus.exe).
3. From a CMD line, type "Change user /install" to enter "Install mode". Install "SigPlus.exe". Choose your tablet model during install and the COM1 connection type. After installing, from CMD line, type "Change user /execute" or restart server to place server back into "Execute mode" before using the application.
4. Copy the "SigPlus.ini" from C:\Windows on the server and place it into the root of C:\ on the server. Then rename it to "SigPlusRoot.ini".
5. Double-click this new "SigPlusRoot.ini" file to open it, as seen here.

```
SigPlus - Notepad
File Edit Format View Help
[Tablet]
TabletComPort=9
TabletType=0
TabletLCDMode=0
TabletModel=SignatureGemLCD1X5
EnableColor=0
Win95USB=0
ImageScreenResolution=1
UseMultiUSB=0
DisableMessages=0

[SignatureGem1x5]

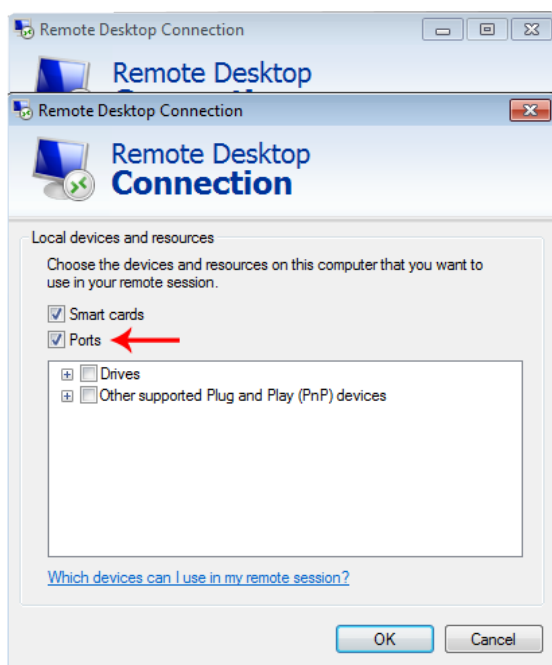
TabletXStart=400
TabletXStop=2400
TabletYStart=350
TabletYStop=950
TabletLogicalXSize=2000
TabletLogicalYSize=600
TabletFilterPoints=4
TabletTimingAdvance=4
TabletBaudRate=19200
TabletResolution=410
```

6. Change the "TabletComPort" assignment to the COM port you noted from Step 5 on Page 7. In the example here, our TabletComPort = 9.
7. Once done, click "File" → "Save".



### Part 3: Setting Up Remote Desktop for Serial Port Redirection

1. Click "Start" → "All Programs" → "Accessories" → "Remote Desktop Connection".
2. The "Remote Desktop Connection" window opens. Click "Options" in the corner.
3. Click the "Local Resources" tab at the top of the window. Then, click "More..." in the "Local devices and resources" section of the window.
4. Click "Ports" to check the box, as seen here. Then, click "OK". "Ports" needs to be checked when you log into a session for the signature pad to



## Testing Your BSB Signature Pad

Before testing your application, you should test with "DemoOCX.exe". This can be found in C:\Windows\SigPlus on the server. Open "DemoOCX.exe", click "Start", and sign on your pad. You should see your writing in the demo window.