



Topaz Systems, Inc. ClipGemCoordinateReturn Guide

Topaz Systems, Inc.
650 Cochran Street, Unit 6
Simi Valley, CA, 93065

www.topazsystems.com
tech support: 805 520-8286
support@topazsystems.com

©1995-2006, all rights reserved, US patent 6,307,955, and pending

The ClipGemCoordinateReturnDemo is perfect for the developer who is developing an application for use with a Topaz Clip Gem or ClipGemLegal. The ClipGemCoordinateReturnDemo's main purpose is to provide the developer with the X and Y coordinates of any location on the ClipGem merely by tapping the pen on that location. You can also easily determine the horizontal and vertical distance between two points merely by drawing a line between them.



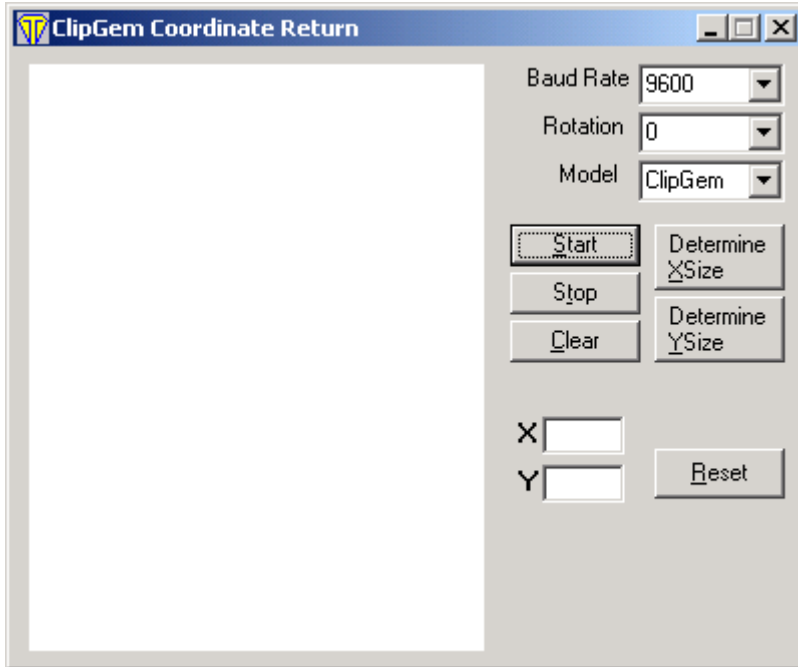
These coordinates are useful to easily obtain the arguments necessary for KeyPadAddHotSpot and SetSigWindow. Specifically these arguments are XPos, Ypos, Xsize, and Ysize.

These are used to create an area on the ClipGem that starts at the X and Y pos, and extends for the X and Y size.

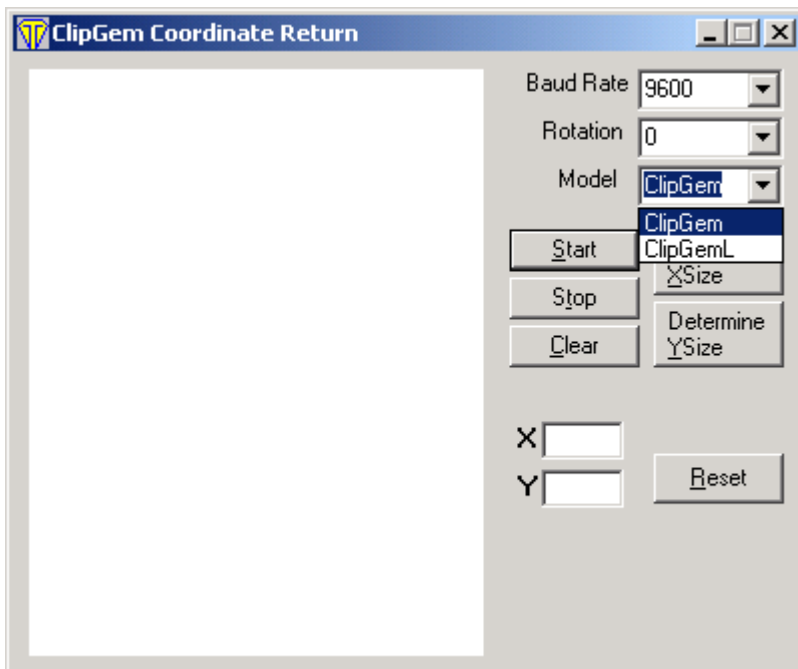
To Download go to:

<http://www.topazsystems.com/software/ClipGemCoordinateReturnDemo.zip>

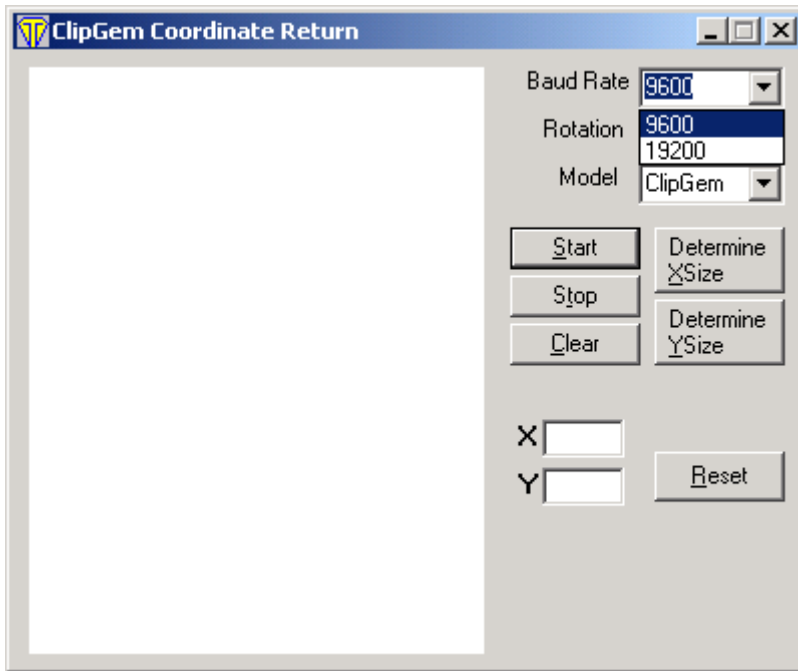
Start by opening ClipGemCoordinateReturnDemo.exe. The window below will appear.



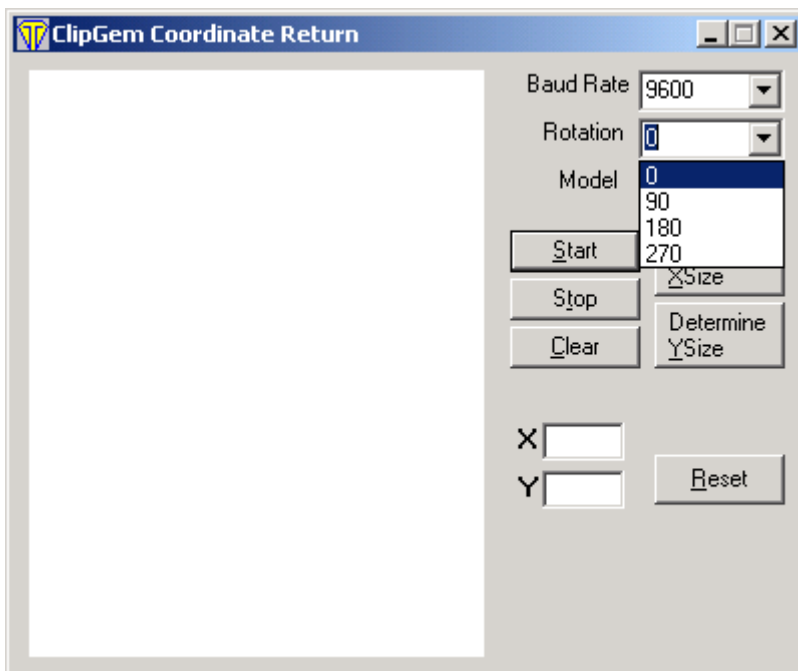
Adjust the model number to match your ClipGem. T-912 is a ClipGem, and T-916 is the ClipGemL. You will find the model number on the backside of your tablet.



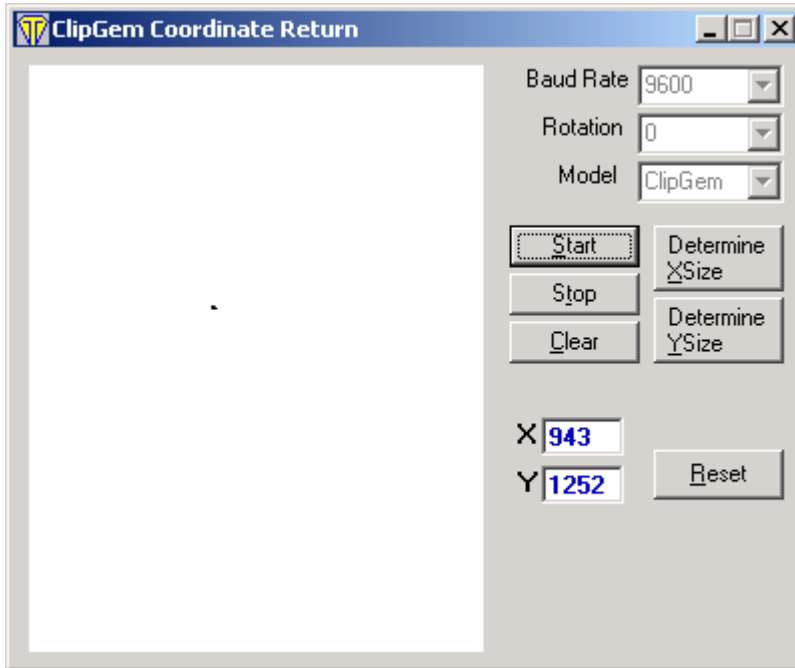
Adjust the baud rate to match the number of your ClipGem. The number is found in the model number of your unit. T-C91X-19200 represents a clip Gem with a baud rate of 19200, while T-C91X represents a ClipGem with a baud rate of 9600.



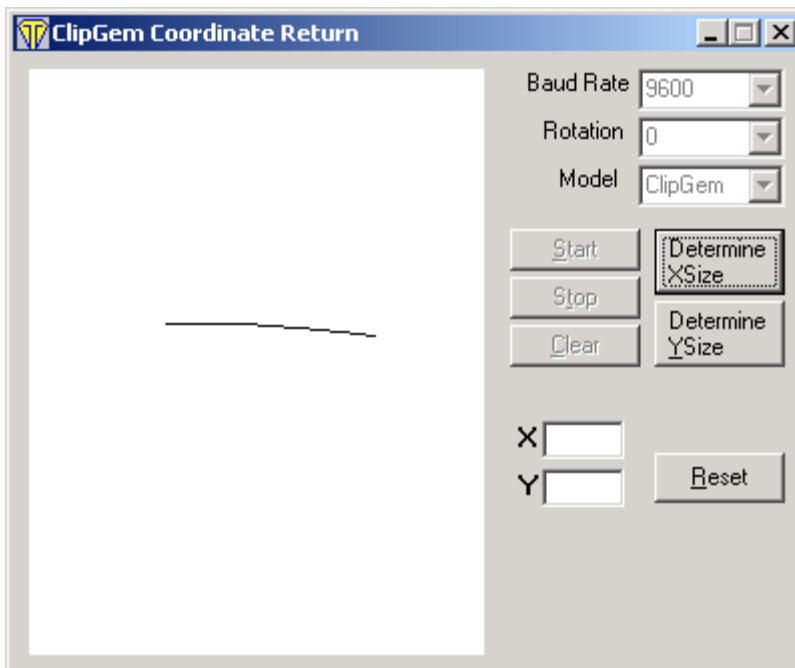
Now change rotation of the tablet to replicate your developing needs. 0 represents a vertically held ClipGem with the clip at the top, 90 with a horizontally held ClipGem with the clip on the right, and so on. Shown below.



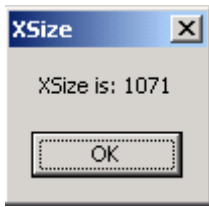
Click “Start” and push the tip of the pen down on any point of the ClipGem pad. The X and Y coordinates of that contact point will be displayed in text boxes as shown below.



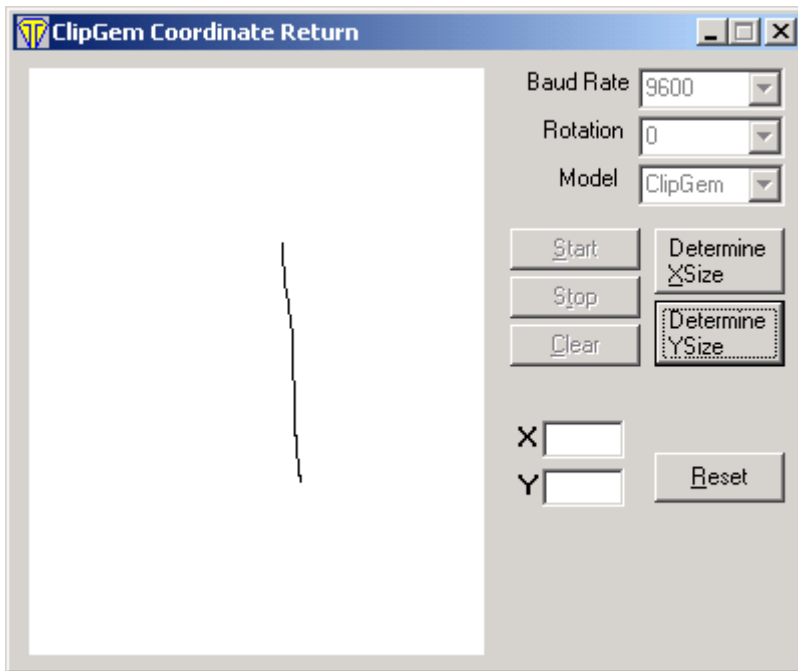
In order to tell the horizontal distance between two points on your ClipGem, click “Determine X Size.” Then draw a line between the points. It doesn’t matter if you draw left-to-right, or right-to-left.



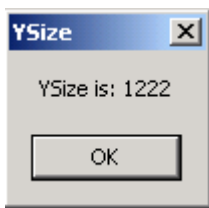
You will see a screen like the one below telling you the exact horizontal distance between the two points.



In order to tell the vertical distance between two points on your ClipGem, click "Determine Y Size." Then draw a line between the points. It doesn't matter if you draw top-to-bottom or bottom-to-top.



You will see a screen like the one below telling you the exact vertical distance between the two points.



To change any settings after pressing “Start”, press “Stop”. You can also click the “Reset” button to restart the demo with default settings. When you are ready to use ClipGemCoordinateDemo again, press “Start.”

For more information regarding products and support
Email: support@topazsystems.com
Phone: (805) 520-8286

www.topazsystems.com
650 Cochran Street, Unit 6, Simi Valley, CA, USA, 93065
Phone: 805 520-8282; Fax: 805 520-0867