

Topaz Systems, Inc.
SigPlus Adjust How To

Topaz Systems, Inc.
650 Cochran Street, Unit 6
Simi Valley, CA, 93065
©1995-2005, all rights reserved, US patent 6,307,955, and pending

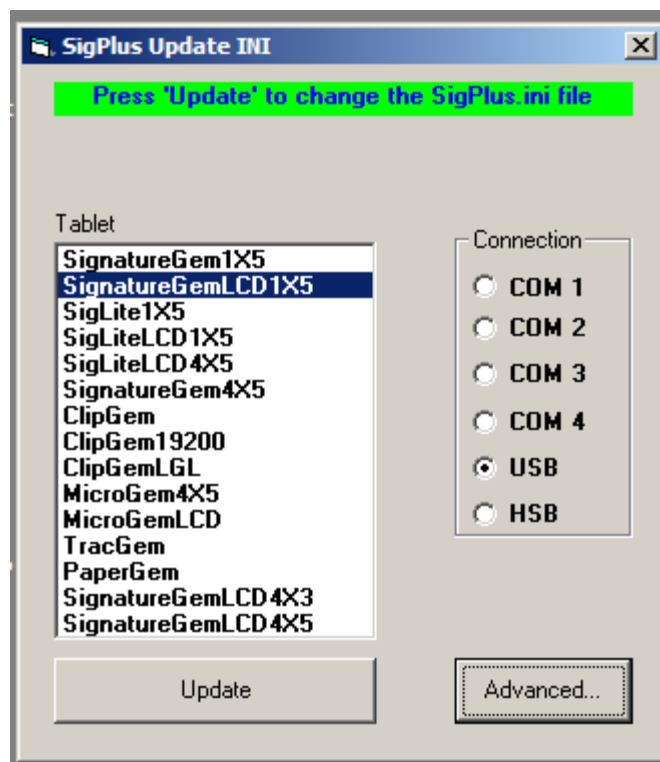
www.topazsystems.com
tech support: 805 520-8286
support@topazsystems.com

Description

SigPlus Adjust is a tool that offers an easy, user-friendly way to update the .INI files of SigPlus and SigPlus plug-ins. Using SigPlus Adjust physically alters the SigPlus.INI file and as such after updating these configurations the user will need to reopen the application or plug-in they were using to load the updated SigPlus settings.

Using Sig Plus Adjust:

Opening SigPlusAdjust opens the 'SigPlus Update INI' window with the current .INI settings highlighted already. (Fig. 1)



(Fig. 1)

In the 'SigPlus Update INI' window there are many options to successfully set up your signature capture tablet. In the 'Tablet' menu there is a list of Topaz signature tablets, choose the tablet you will be using (i.e. SignatureGemLCD1X5). Next, choose what connection the tablet will be making use of. It is important to note that though both USB and HSB tablets make use of a USB connection, they are not interchangeable. The HSB tablets use a Microsoft HID driver for connectivity whereas the USB models do not. If

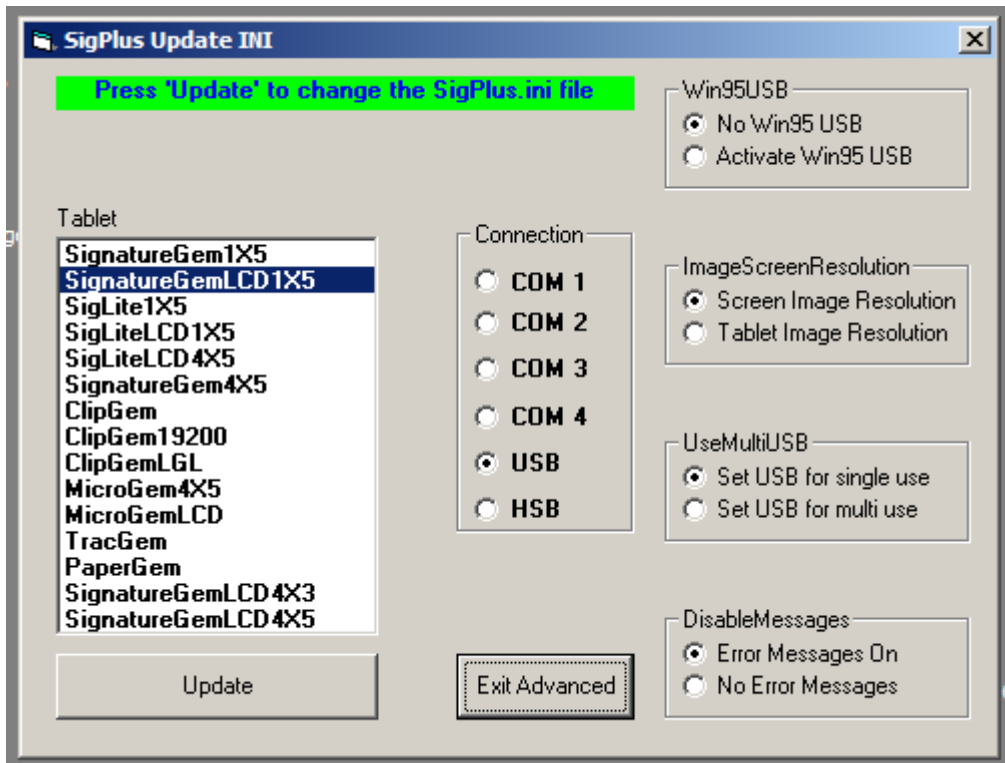
Topaz Systems, Inc.
SigPlus Adjust How To

Topaz Systems, Inc.
650 Cochran Street, Unit 6
Simi Valley, CA, 93065
©1995-2005, all rights reserved, US patent 6,307,955, and pending

www.topazsystems.com
tech support: 805 520-8286
support@topazsystems.com

you are not sure which model you have check the model number on the back of the tablet. In most instances this will configure SigPlus and its plug-ins for use with the users tablet.

In addition to the tablet and connection settings, clicking the 'Advanced' button will open a menu with more options (Fig. 2).



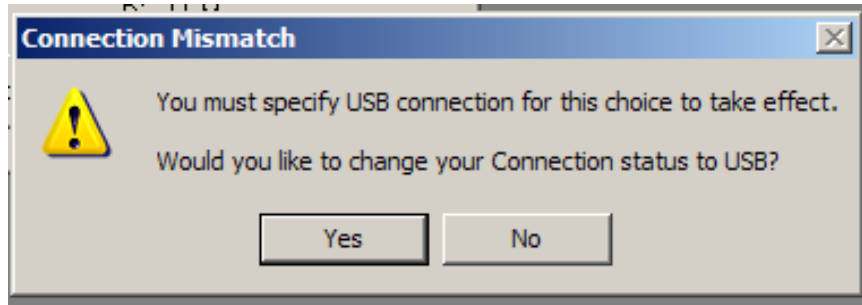
(Fig. 2)

Win95USB- This setting is for users who are using Windows 95 with a USB signature tablet. Activating Win95USB will configure SigPlus for use in Windows 95 with a USB tablet. If you have not chose USB as your connection, Activating Win95USB will cause an error message prompting you to change your connection setting (Fig. 3)

Topaz Systems, Inc.
SigPlus Adjust How To

Topaz Systems, Inc.
650 Cochran Street, Unit 6
Simi Valley, CA, 93065
©1995-2005, all rights reserved, US patent 6,307,955, and pending

www.topazsystems.com
tech support: 805 520-8286
support@topazsystems.com



(Fig. 3)

ImageScreenResolution- This setting is for setting what resolution the signature image will be displayed at. By default, these images are written out at screen resolution (at whatever resolution the screen is at...typically around 96 dpi or so). This is the "Screen Image Resolution" option. If desired, the user can specify the resolution at which images are written out, by choosing Tablet Image Resolution. Now, whatever the developer set (in code) for the TabletResolution property will be the resolution at which the image is written out, ie: TabletResolution=300 will result in the image getting written out (when WriteImageFile() is called) at 300 dpi rather than the screen resolution, which is always fixed. This is a setting that is for developers use.

UseMultiUSB- This sets the USB port for use with a single device or for multiple devices being used simultaneously, but will only work if the application in use has implemented the multi USB functionality. The user should only set UseMultiUSB for multi use if their technical support group (from their own company or software vendor) tells them it is needed.

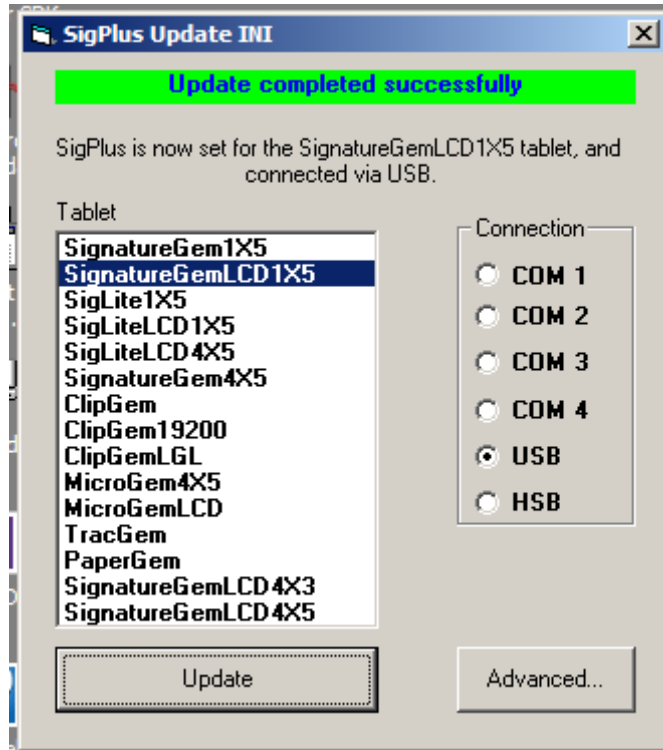
DisableMessages- This sets SigPlus to either display a notification when an error occurs or not.

Once the proper settings have been chosen, click the 'Update' button. A message will appear at the top of the window (Fig. 4) if the update has been successful.

Topaz Systems, Inc.
SigPlus Adjust How To

Topaz Systems, Inc.
650 Cochran Street, Unit 6
Simi Valley, CA, 93065
©1995-2005, all rights reserved, US patent 6,307,955, and pending

www.topazsystems.com
tech support: 805 520-8286
support@topazsystems.com



(Fig. 4)

Now that the SigPlus.INI file has been updated, close and reopen any plug-in or application that was currently open to load the new settings.