

Topaz Systems, Inc.
650 Cochran Street, Unit 6
Simi Valley, CA, 93065
©1995-2005, all rights reserved, US patent 6,307,955, and pending

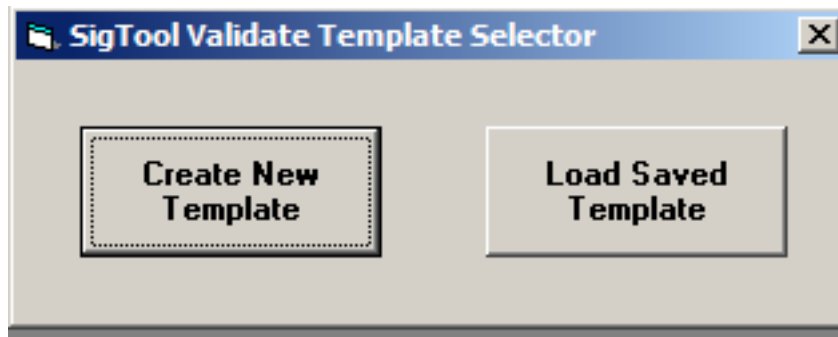
www.topazsystems.com
tech support: 805 520-8286
support@topazsystems.com

Topaz SigValidate program creates a template based on a person's signature, allowing the later validation of a signature against the template. If the signature in question does not match the template, the signature is a forgery. If the signature matches the template, the signature is valid. The template can be encrypted, so it cannot be accessed without providing a key. The template can also be set to update itself automatically when a signature validated successfully against it. The new signature data is added to the template, allowing for slow change of an author's signature over time.

Though SigValidate contains all the functionality required for signature verification, developers can use the methodology to implement verification tools into individual applications.

Using SigValidate

Starting SigValidate will open the Template Selector.



Choosing 'Create New Template' will open the Signature Template Creator Form.

Topaz Systems, Inc.
SigValidate How To

Topaz Systems, Inc.
650 Cochran Street, Unit 6
Simi Valley, CA, 93065
©1995-2005, all rights reserved, US patent 6,307,955, and pending

www.topazsystems.com
tech support: 805 520-8286
support@topazsystems.com

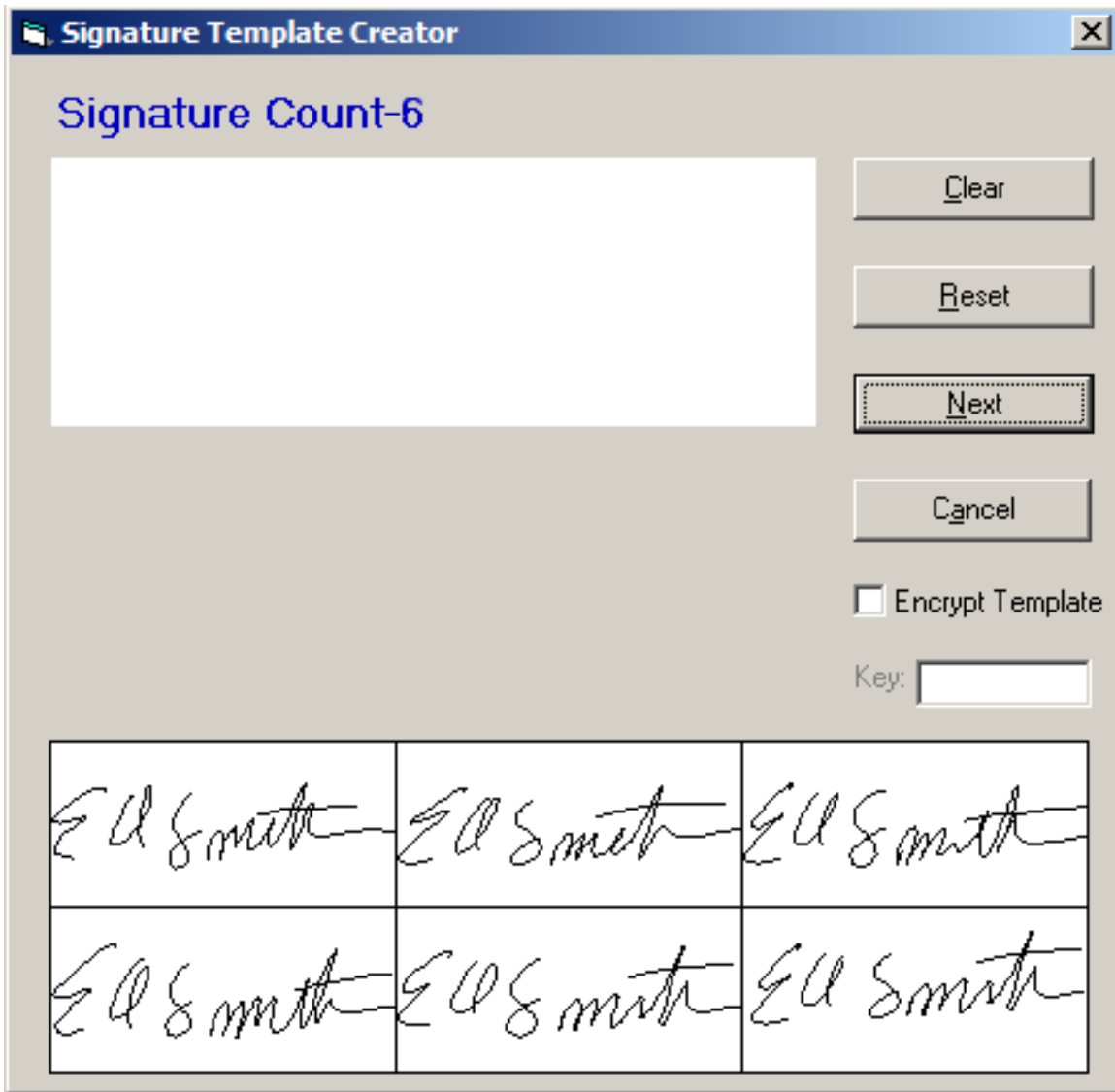
This is where the signature template will be created for each user. SigValidate requires seven signatures to successfully create a valid signature template. Each time a signature is made, it will then appear in one of the boxes below the signature display window once the user hits the 'Next' button. Each time a signature is added the Signature Count header will change accordingly. If the user is not satisfied with a signature, 'Clear' will clear the signature window, if after a few signatures the user is not satisfied 'Reset' will reset the template creation process, and at any time 'Cancel' will end the template creation process. The Encrypt Template box can be checked if the user wishes to create an 8-digit

Topaz Systems, Inc.
SigValidate How To

Topaz Systems, Inc.
650 Cochran Street, Unit 6
Simi Valley, CA, 93065
©1995-2005, all rights reserved, US patent 6,307,955, and pending

www.topazsystems.com
tech support: 805 520-8286
support@topazsystems.com

encryption key in addition to the signature template, so that it may only be used when successfully unlocked, adding security to the usage of the template.

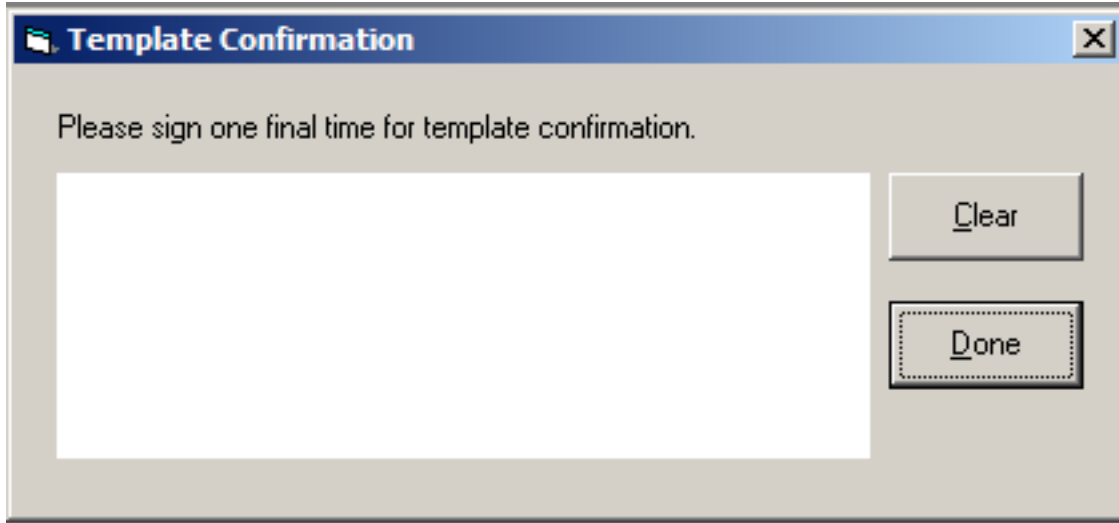


After the first six signatures have been input; a confirmation window will appear that will require one more signature to successfully create a signature template.

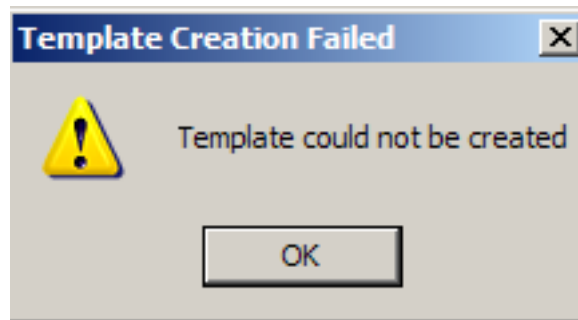
Topaz Systems, Inc.
SigValidate How To

Topaz Systems, Inc.
650 Cochran Street, Unit 6
Simi Valley, CA, 93065
©1995-2005, all rights reserved, US patent 6,307,955, and pending

www.topazsystems.com
tech support: 805 520-8286
support@topazsystems.com



Once the user is happy with their final signature, he/she can click 'Done'. If there is a large discrepancy between the signatures and a template cannot be created an error message will be generated.

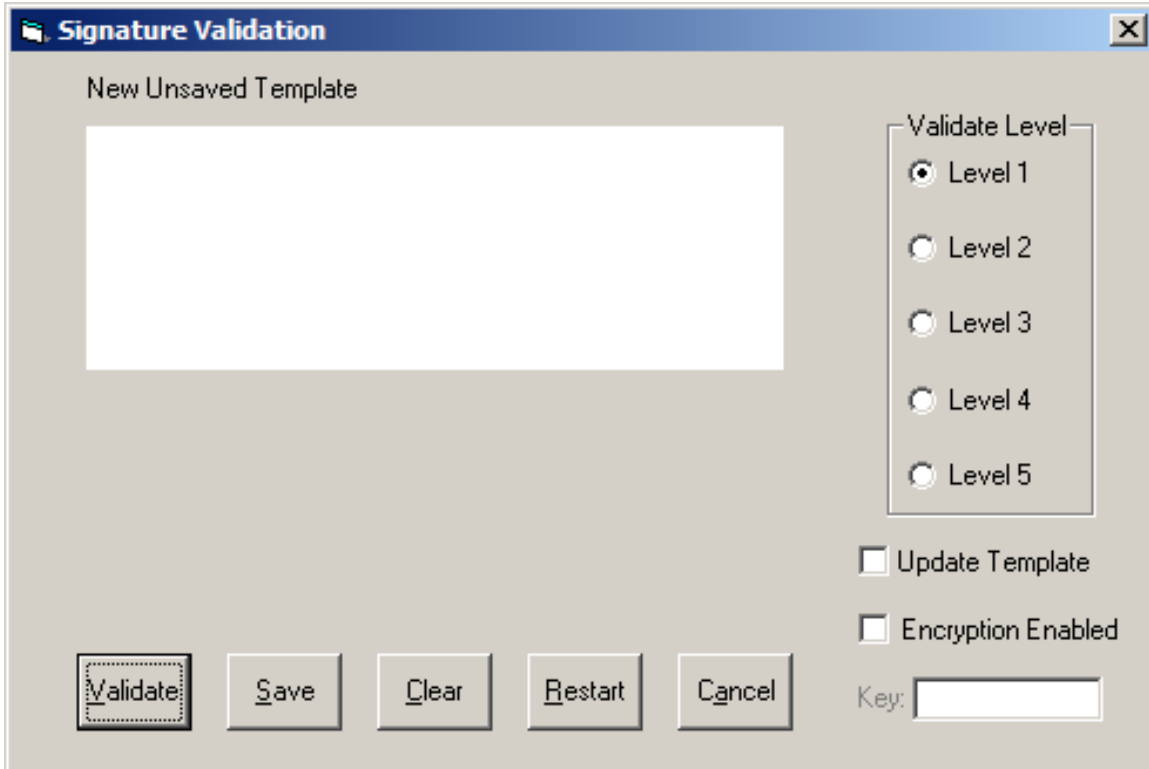


If all of the signatures match and a template is created, SigValidate will then take the user to the Signature Validation Form.

Topaz Systems, Inc.
SigValidate How To

Topaz Systems, Inc.
650 Cochran Street, Unit 6
Simi Valley, CA, 93065
©1995-2005, all rights reserved, US patent 6,307,955, and pending

www.topazsystems.com
tech support: 805 520-8286
support@topazsystems.com

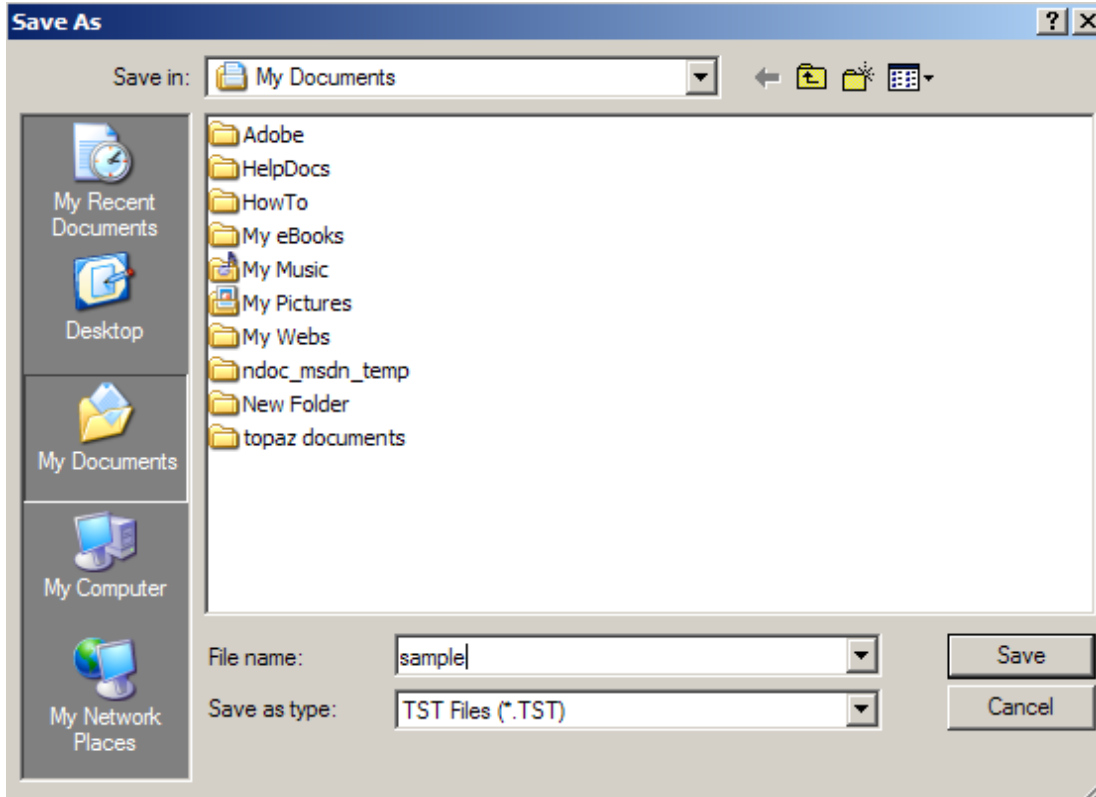


From the Signature Validation Form the user has many different options. To start, the user can save their signature template by clicking the 'Save' button. This will open a 'Save As' window where the user will name their template and save it as a .TST file (in this case sample.TST)

Topaz Systems, Inc.
SigValidate How To

Topaz Systems, Inc.
650 Cochran Street, Unit 6
Simi Valley, CA, 93065
©1995-2005, all rights reserved, US patent 6,307,955, and pending

www.topazsystems.com
tech support: 805 520-8286
support@topazsystems.com



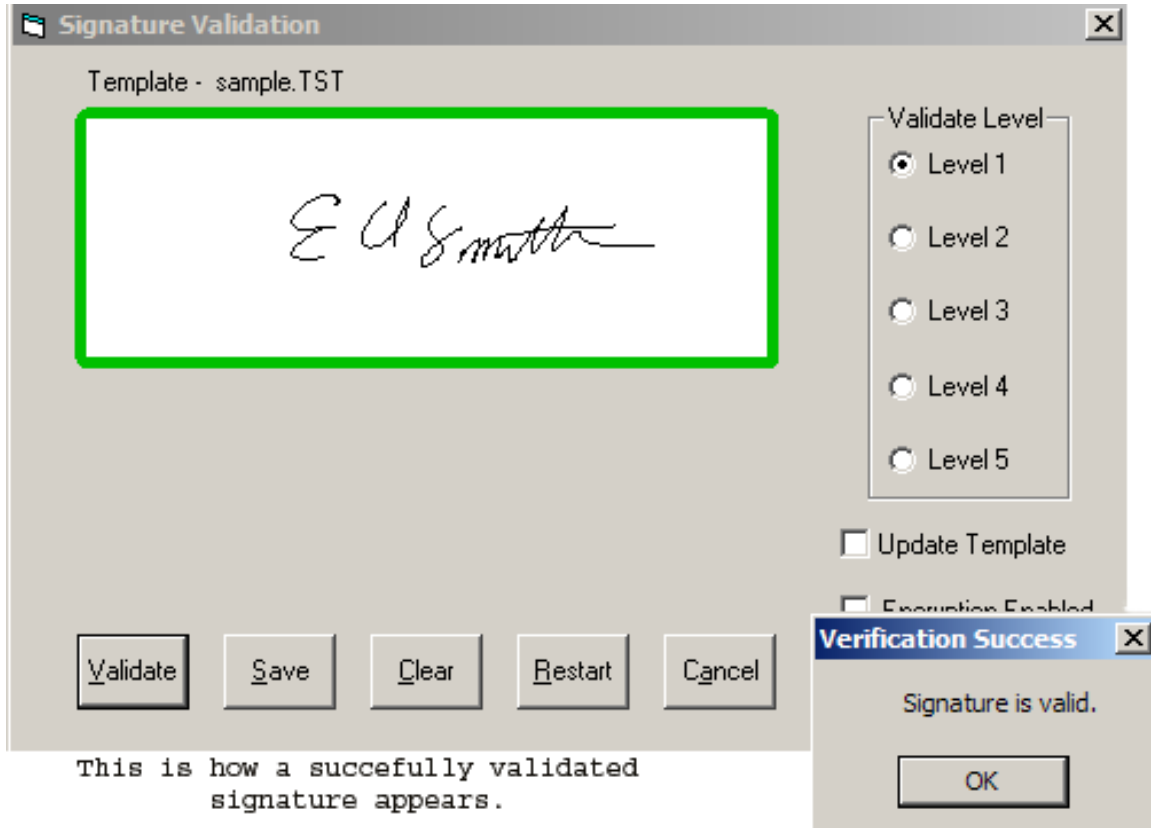
Once the template is successfully saved, validation can occur. To validate a signature, the user will simply sign on the Topaz signature capture pad. The signature will appear in the signature window. If the user is not happy with their signature they can click 'Clear' to resign. 'Cancel' will end the validation process; 'Restart' will restart SigValidate and reopen the Template Selector window. If the user is satisfied with their signature, then click 'Validate' and SigValidate will validate the authenticity of the signature.

If the signature is valid a green border will appear around the signature window and a message will appear denoting successful verification. If the signature is unable to be validated a red border will surround the signature window and a window will appear declaring the signature a forgery.

Topaz Systems, Inc.
SigValidate How To

Topaz Systems, Inc.
650 Cochran Street, Unit 6
Simi Valley, CA, 93065
©1995-2005, all rights reserved, US patent 6,307,955, and pending

www.topazsystems.com
tech support: 805 520-8286
support@topazsystems.com



For Validation there are options that administrators and users can choose. If an encryption key was used in the creation of the template then that option will need to be checked and the appropriate key entered or SigValidate will not validate the signature. Depending on a users security needs, the 'Validate Level' can be changed to require a more stringent validation process. Level 1 is the most lax, and level 5 is the most stringent. Additionally, the 'Update Template' checkbox can also be checked if the user wishes to enable the AutoUpdate functionality. This will allow the current template to incorporate any new signature data into itself, if a signature is validated against it successfully. This functionality allows the template to change slowly over time with any changes and evolution to the author's signature.

If the user has already created their signature template, then from the Template Selector window choose '**Load Saved Template**'. This will bring up an 'Open' window. Choose the appropriate template and click 'Open'. This will load the user's template and open the Signature Validation window.