

Topaz Systems, Inc.
Topaz Ethernet Adaptor How-To

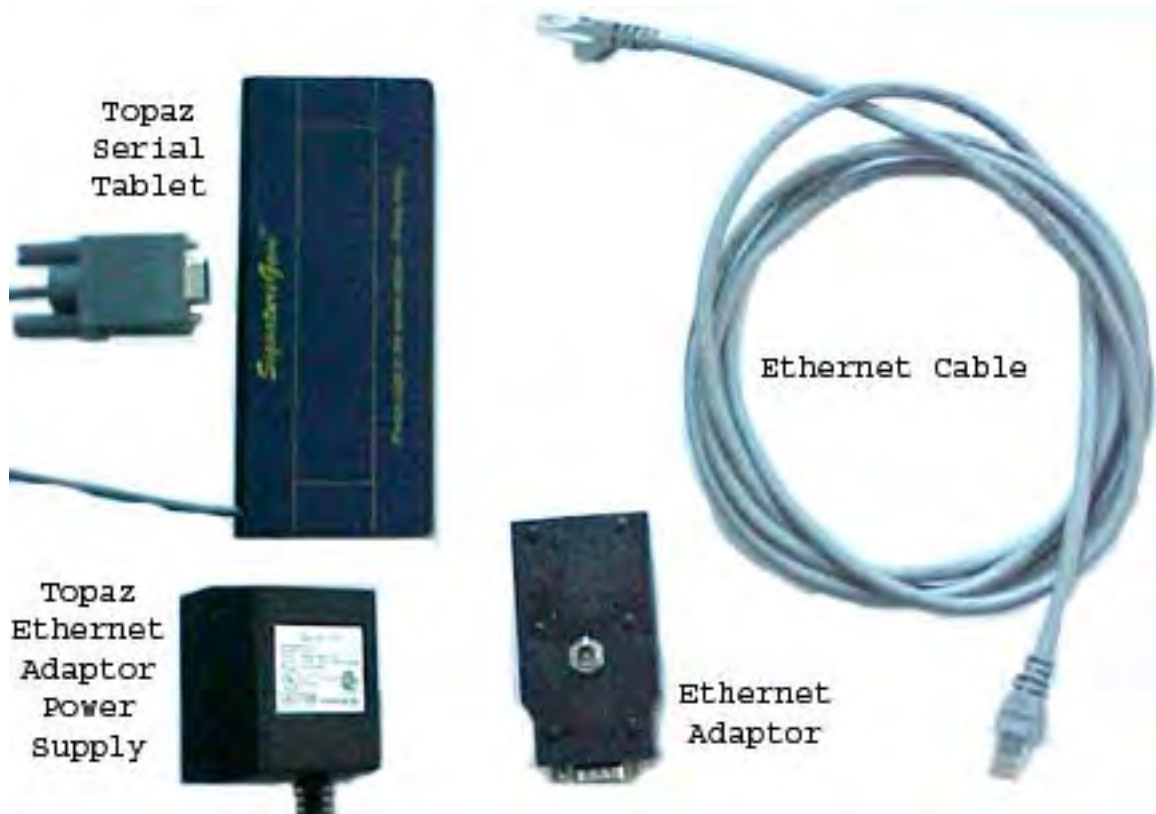
Topaz Systems, Inc.
650 Cochran Street, Unit 6
Simi Valley, CA, 93065
©1995-2005, all rights reserved, US patent 6,307,955, and pending

www.topazsystems.com
tech support: 805 520-8286
support@topazsystems.com

Topaz Ethernet Adaptor How To

Hardware:

Before installation of both the Digi Connect ME and SigPlusE (the SigPlus installation for both SigPlus and the DigiConnect ME converter) the Ethernet adaptor and tablet must first be properly connected to your Network hub. This will require a suitable Ethernet cable, the Topaz Ethernet adaptor, a Topaz tablet with a serial connection, and the included power supply for the Ethernet adaptor (Fig. 1).



(Fig.1)

Once you have all the necessary items, plug the Ethernet cable (also connected to the Network hub) and Topaz tablet into the appropriate ends of the Ethernet Adaptor.

Topaz Systems, Inc.
Topaz Ethernet Adaptor How-To

Topaz Systems, Inc.
650 Cochran Street, Unit 6
Simi Valley, CA, 93065
©1995-2005, all rights reserved, US patent 6,307,955, and pending

www.topazsystems.com
tech support: 805 520-8286
support@topazsystems.com

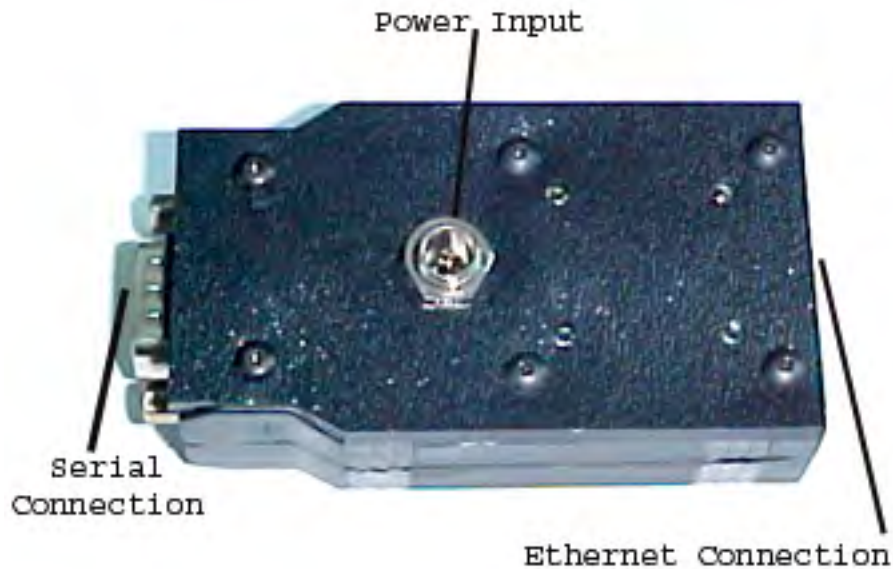
Serial Connection



Ethernet Connection



Now, plug the power supply into the Ethernet adaptor.



Once the power supply, Topaz tablet, and Ethernet cable (also connected to the Network Hub) is connected, an orange light (for Network connection) and blinking green light (for power) should be visible, denoting the Ethernet Adaptor is functioning.

Topaz Systems, Inc.
Topaz Ethernet Adaptor How-To

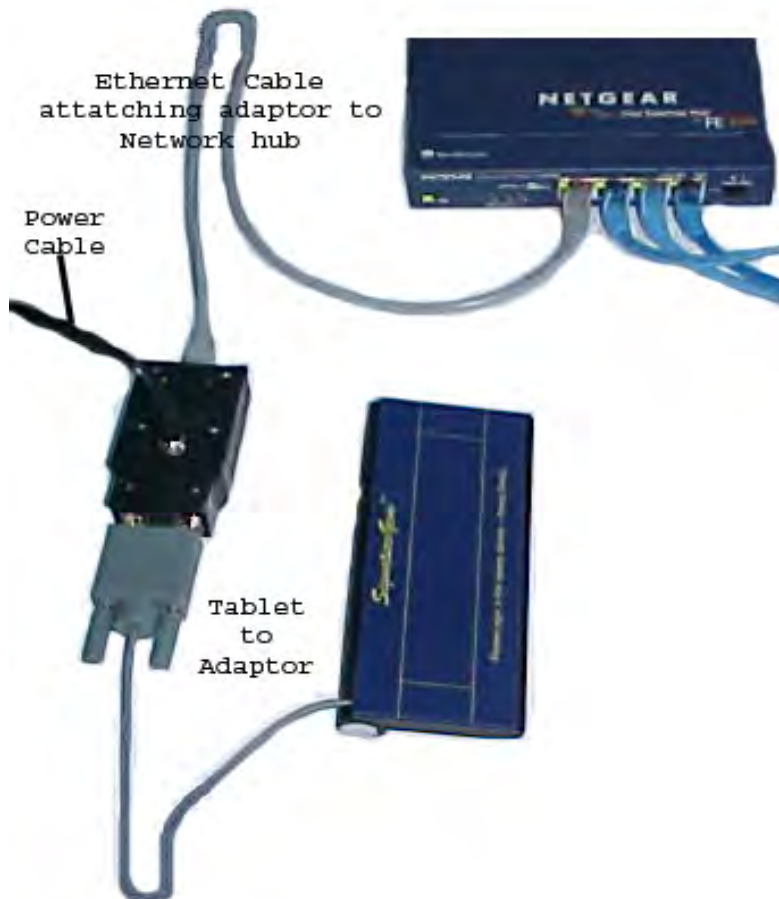
Topaz Systems, Inc.
650 Cochran Street, Unit 6
Simi Valley, CA, 93065
©1995-2005, all rights reserved, US patent 6,307,955, and pending

www.topazsystems.com
tech support: 805 520-8286
support@topazsystems.com

When powered on and properly connected, an orange light and a blinking green light should be visible



The entire setup should look something like this



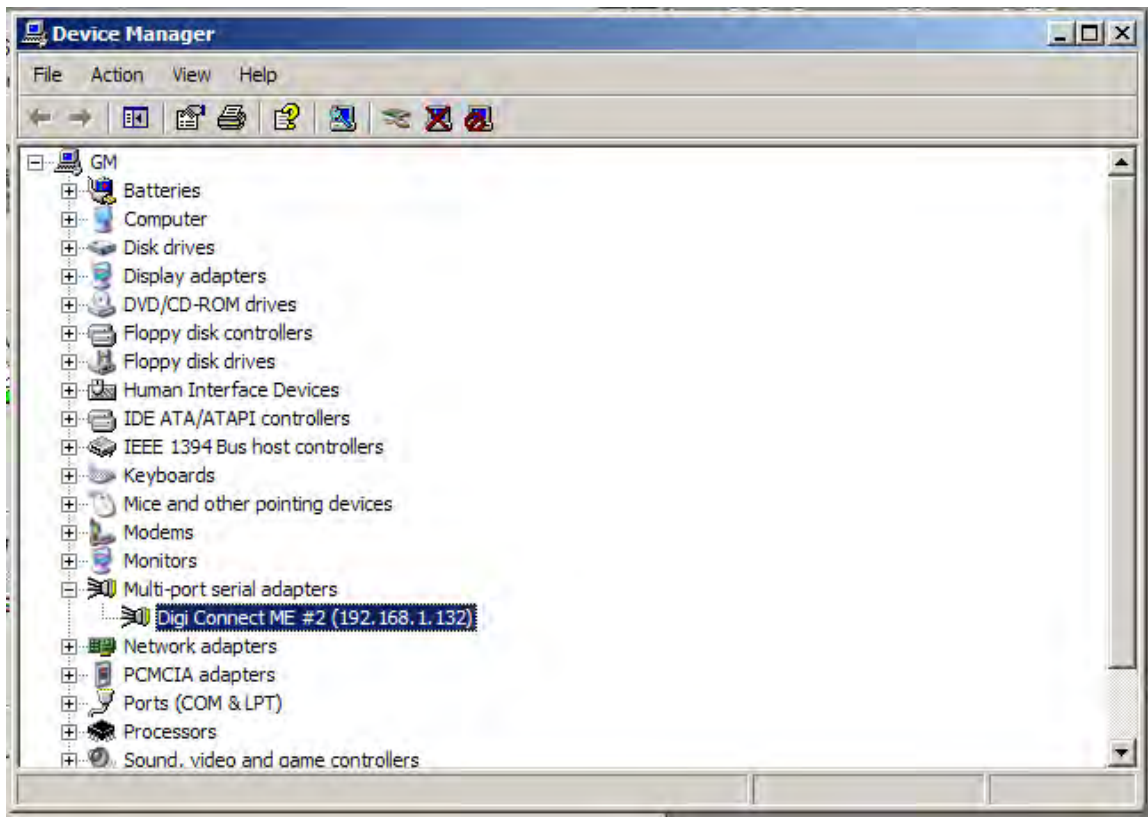
Topaz Systems, Inc.
Topaz Ethernet Adaptor How-To

Topaz Systems, Inc.
650 Cochran Street, Unit 6
Simi Valley, CA, 93065
©1995-2005, all rights reserved, US patent 6,307,955, and pending

www.topazsystems.com
tech support: 805 520-8286
support@topazsystems.com

Once the Adaptor is properly setup, now the user can proceed with the software installation. In order for the Ethernet adapter to work properly, users need to install the proper version of SigPlus, (SigPlusE). This version can be downloaded at:

<http://www.topazsystems.com/Software/sigpluse.exe>



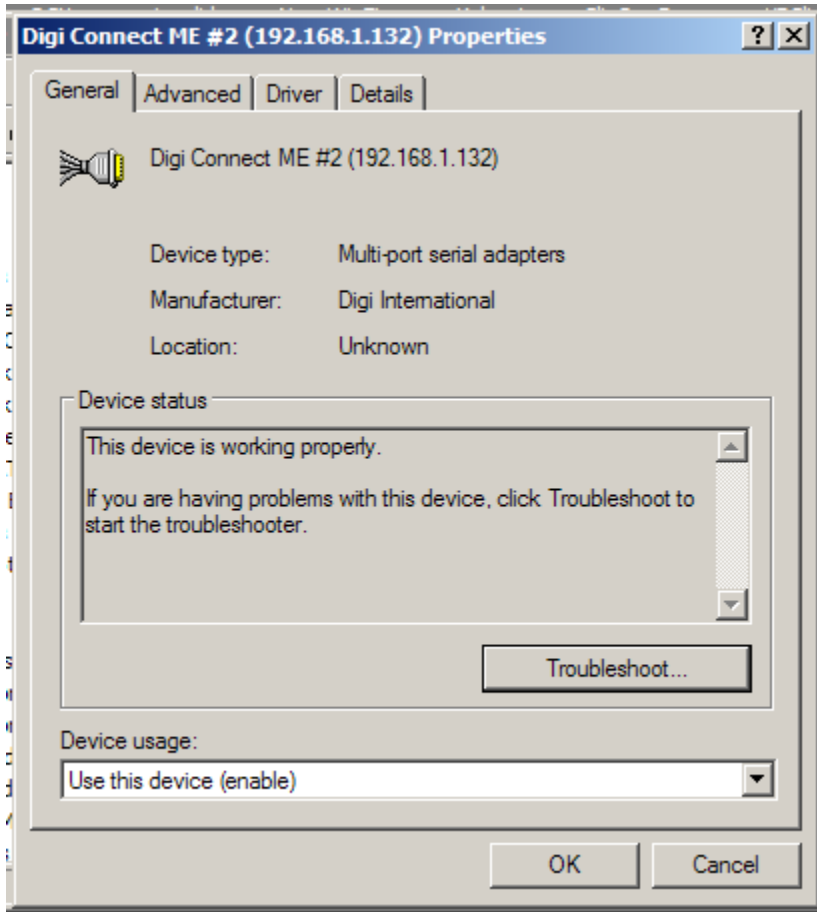
Installing SigPlusE will also install your Ethernet adaptor. In most cases the installation process will configure the system to work. After the installation and setup procedures are finished, the user can check the status of the adaptor by going into the Device Manager.

Under the 'Multi port serial adapters' will be the Digi Connect ME. Highlight it and right click, then choose 'Properties.' This will open the properties window

Topaz Systems, Inc.
Topaz Ethernet Adaptor How-To

Topaz Systems, Inc.
650 Cochran Street, Unit 6
Simi Valley, CA, 93065
©1995-2005, all rights reserved, US patent 6,307,955, and pending

www.topazsystems.com
tech support: 805 520-8286
support@topazsystems.com



In the 'Device Status' window it will say if the device is working properly or not.

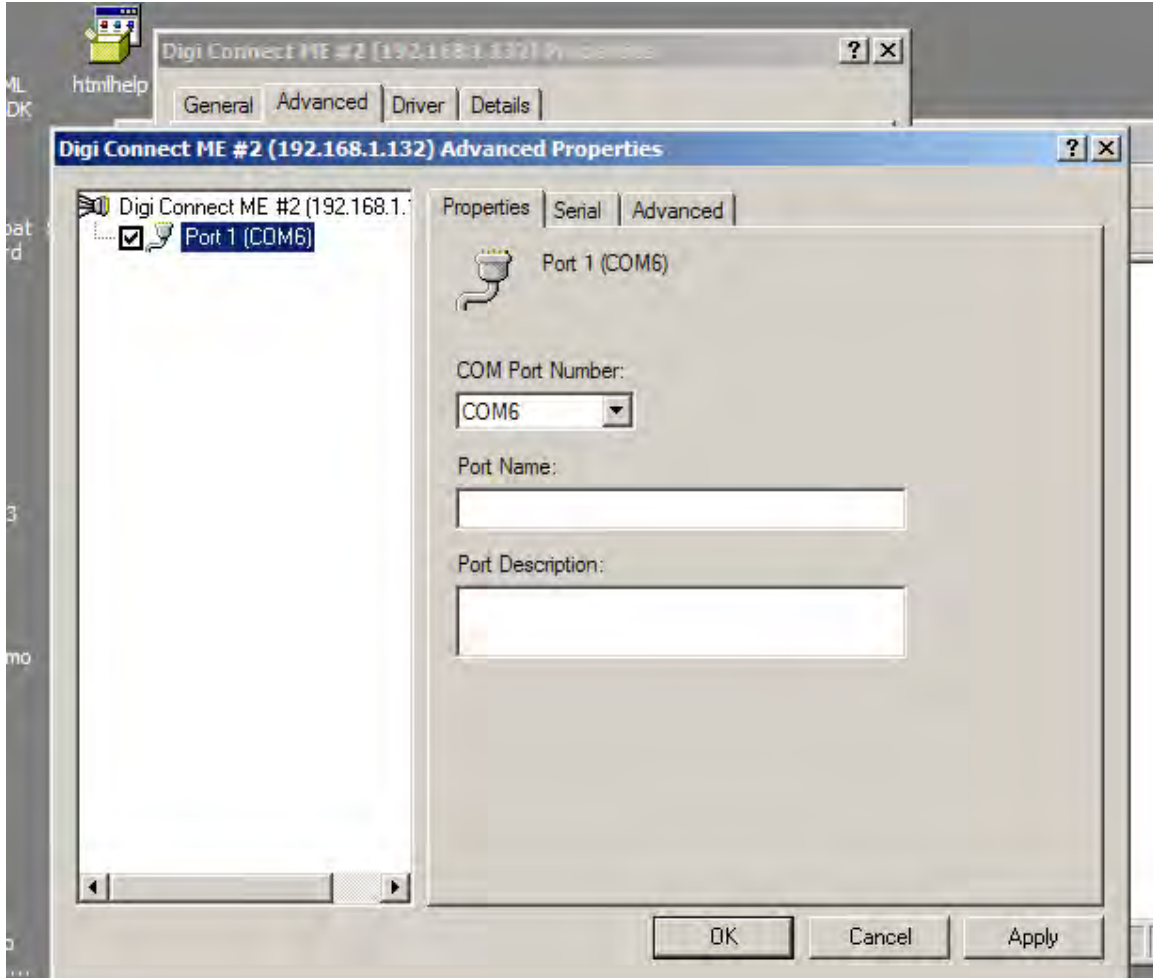
Next, click on the 'Advanced' tab to open the advanced properties window.

Here the user can see what COM Port number the Digi Connect ME has been assigned, in this case, 6. If needed the user can change the COM port setting here.

Topaz Systems, Inc.
Topaz Ethernet Adaptor How-To

Topaz Systems, Inc.
650 Cochran Street, Unit 6
Simi Valley, CA, 93065
©1995-2005, all rights reserved, US patent 6,307,955, and pending

www.topazsystems.com
tech support: 805 520-8286
support@topazsystems.com



It is important to note though, changing the COM port setting after installation will require that the SigPlus.INI file be altered either manually or through SigPlus Adjust.

If, for some reason, it is necessary to change the COM Port setting, it will be necessary to make sure the SigPlus.INI file reflect these changes as well to ensure proper operation. If the COM Port setting is 1-4 (i.e. COM1, COM2, etc.) then all changes can be made through SigPlus Adjust, an easy to use tool for setting up Topaz Signature Tablets. If, like above, the COM Port setting is greater than four (i.e. COM6) then it will be necessary to manually change the SigPlus.INI file. NOTE: In most cases the SigPlus installation process will configure the tablet, changing these settings is only necessary if a change has been made or in the rare case that configuration was unsuccessful.

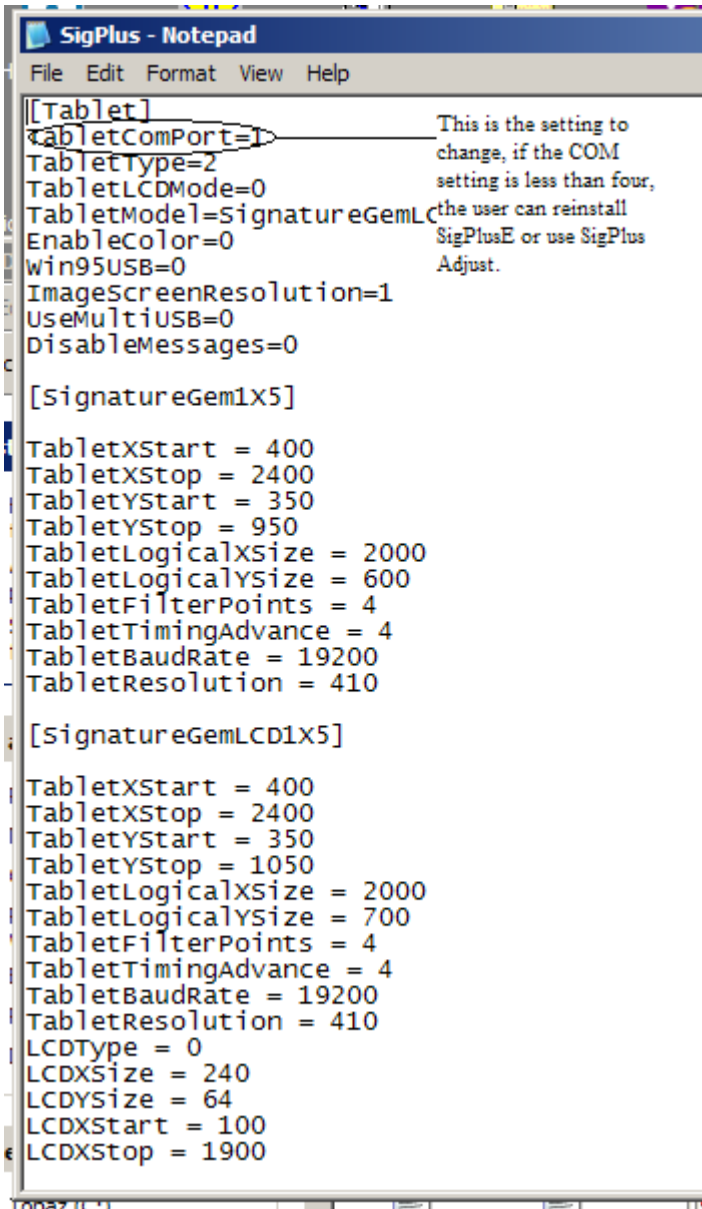
Topaz Systems, Inc.
Topaz Ethernet Adaptor How-To

Topaz Systems, Inc.
650 Cochran Street, Unit 6
Simi Valley, CA, 93065
©1995-2005, all rights reserved, US patent 6,307,955, and pending

www.topazsystems.com
tech support: 805 520-8286
support@topazsystems.com

Changing SigPlus.INI

The SigPlus.INI file is found in the Windows (or Win depending on Windows version) directory. When the SigPlus.INI file is opened it will open in Notepad.



```
[Tablet]
TabletComPort=1
TabletType=2
TabletLCDMode=0
TabletModel=SignatureGemLCD
EnableColor=0
Win95USB=0
ImageScreenResolution=1
UseMultiUSB=0
DisableMessages=0

[SignatureGem1X5]

TabletXStart = 400
TabletXStop = 2400
TabletYStart = 350
TabletYStop = 950
TabletLogicalXSize = 2000
TabletLogicalYSize = 600
TabletFilterPoints = 4
TabletTimingAdvance = 4
TabletBaudRate = 19200
TabletResolution = 410

[SignatureGemLCD1X5]

TabletXStart = 400
TabletXStop = 2400
TabletYStart = 350
TabletYStop = 1050
TabletLogicalXSize = 2000
TabletLogicalYSize = 700
TabletFilterPoints = 4
TabletTimingAdvance = 4
TabletBaudRate = 19200
TabletResolution = 410
LCDType = 0
LCDXSize = 240
LCDYSize = 64
LCDXStart = 100
LCDXStop = 1900
```

Here the necessary changes can be made. After setting TabletComPort to the correct setting it is necessary to save the file to ensure that the changes will take place. Like SigPlus Adjust, once changes have been made and saved, any open applications of Topaz plug-ins will need to be closed and restarted to load the new settings.