

Topaz Systems, Inc.
Serial to USB Port Adapter Guide

Topaz Systems, Inc.
650 Cochran Street, Unit 6
Simi Valley, CA, 93065
©1995-2005, all rights reserved, US patent 6,307,955, and pending

www.topazsystems.com
tech support: 805 520-8286
support@topazsystems.com

With so many new computers lacking a 9 pin serial ports, Topaz has conducted tests with two separate Serial to USB adapters that will ensure the proper functionality of your Topaz serial tablet. The two certified Serial to USB Adapter's are pictured below.



Sewell SW-1301



Keyspan USA-19HS

The USA-19HS is available at <http://www.keyspan.com> and the Sewell adapter is available at <http://www.sewelldirect.com>

Step 1: Install Serial to USB Adapter

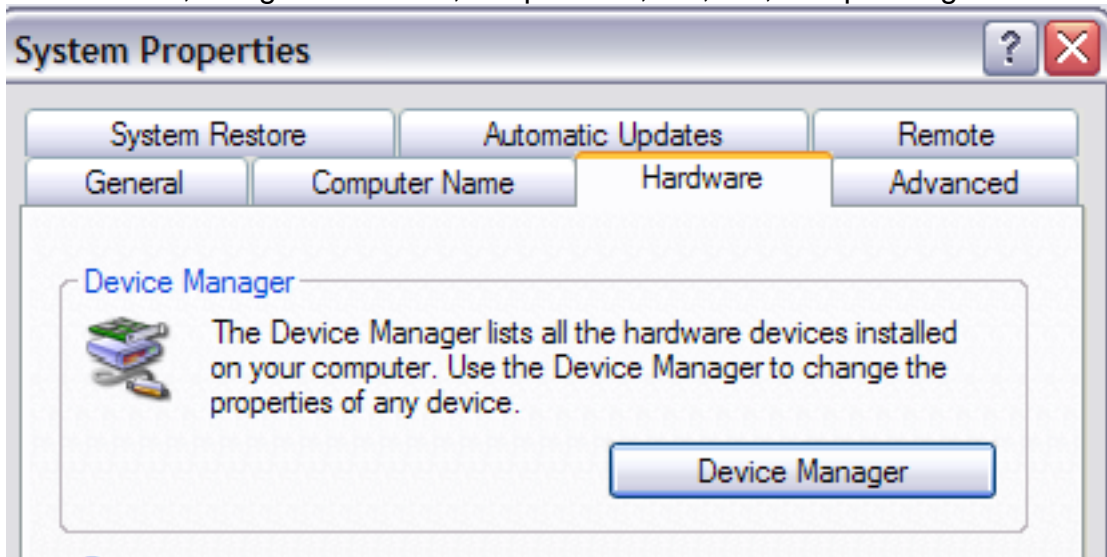
The necessary drivers for both of these adapters are included with the adapters when purchased. Be sure to first follow all installation instructions provided with your adapter. Once these drivers are successfully installed, and the adapters plugged in, SigPlus will need to be installed and configured to ensure full Tablet functionality. Before installing the latest version of SigPlus, start by finding what virtual COM port the adapter has been assigned to by following the instructions below.

- a. Click on Start...Settings...Control Panel
- b. Open the System icon.
- c. Click on the Hardware tab.
- d. Click on the Device Manager button.

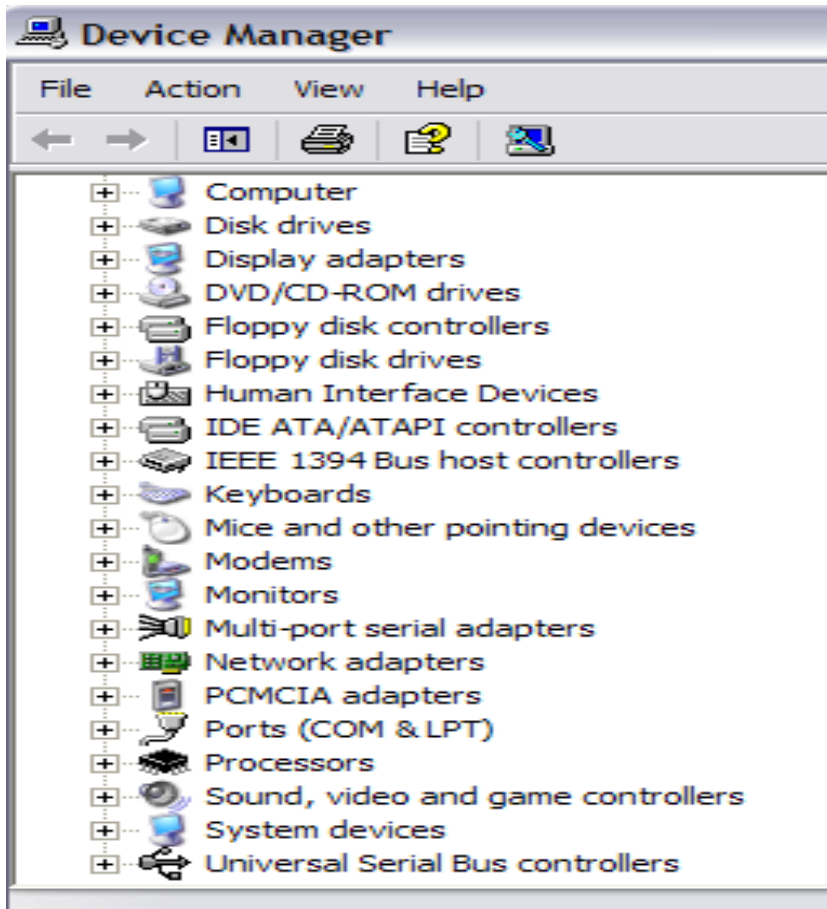
Topaz Systems, Inc.
Serial to USB Port Adapter Guide

Topaz Systems, Inc.
650 Cochran Street, Unit 6
Simi Valley, CA, 93065
©1995-2005, all rights reserved, US patent 6,307,955, and pending

www.topazsystems.com
tech support: 805 520-8286
support@topazsystems.com



e. Locate the "+" sign in front of Ports, and click on it

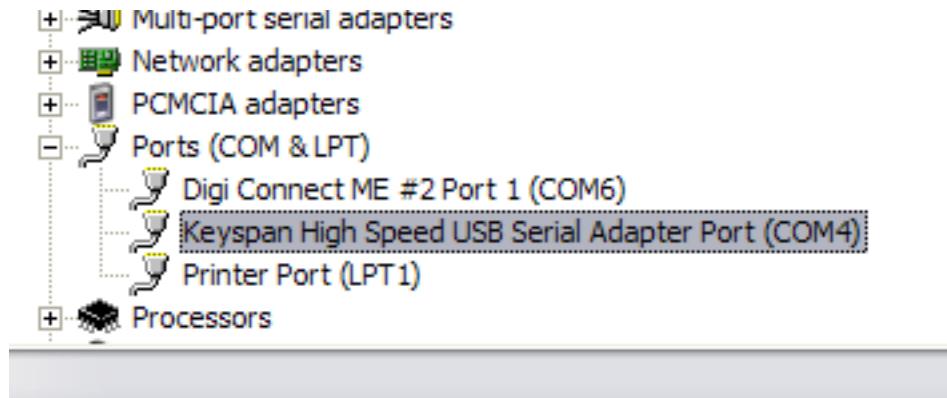


Topaz Systems, Inc.
Serial to USB Port Adapter Guide

Topaz Systems, Inc.
650 Cochran Street, Unit 6
Simi Valley, CA, 93065

www.topazsystems.com
tech support: 805 520-8286
support@topazsystems.com

©1995-2005, all rights reserved, US patent 6,307,955, and pending
f. The adapter will be listed with the COM setting next to it in ()



In this instance the adapter is operating through COM4.

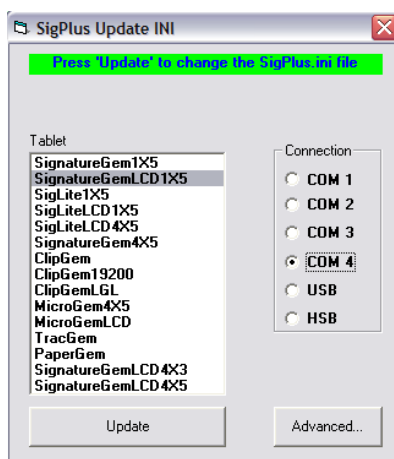
Step 2: Install SigPlus

Now that the Serial to USB adapter is properly installed and operating through a virtual COM port, install SigPlus. The latest version can be downloaded at:

<http://www.topazsystems.com/Software/sigplus.exe>

The SigPlus installation process will take the user step by step to properly set up the Topaz signature tablet to function properly through the virtual COM port already installed. **BE SURE TO INSTALL SIGPLUS FOR SERIAL AND NOT USB, CHOOSING THE VIRTUAL COM PORT ASSIGNED TO THE ADAPTER!** If SigPlus is already installed on your machine then the settings can be changed by using the SigPlusAdjust tool, which can be downloaded from:

<http://www.topazsystems.com/Software/SigPlusAdjust.exe>



For an in depth explanation of how SigPlusAdjust works see the SigPlusAdjust HowTo documentation.

Topaz is willing to test the compatibility of Serial to USB adapters. For more information email

support@topazsystems.com