



Topaz Systems, Inc. SigPlusAppDemo Guide (JAVA)

Topaz Systems, Inc.
650 Cochran Street, Unit 6
Simi Valley, CA, 93065
©1995-2006, all rights reserved, US patent 6,307,955, and pending

www.topazsystems.com
tech support: 805 520-8286
support@topazsystems.com

Welcome to the SigPlus SigPlusAppDemo Guide. This will walk you through our demo “SigPlusAppDemo.java”, available from our website (www.topazsystems.com).

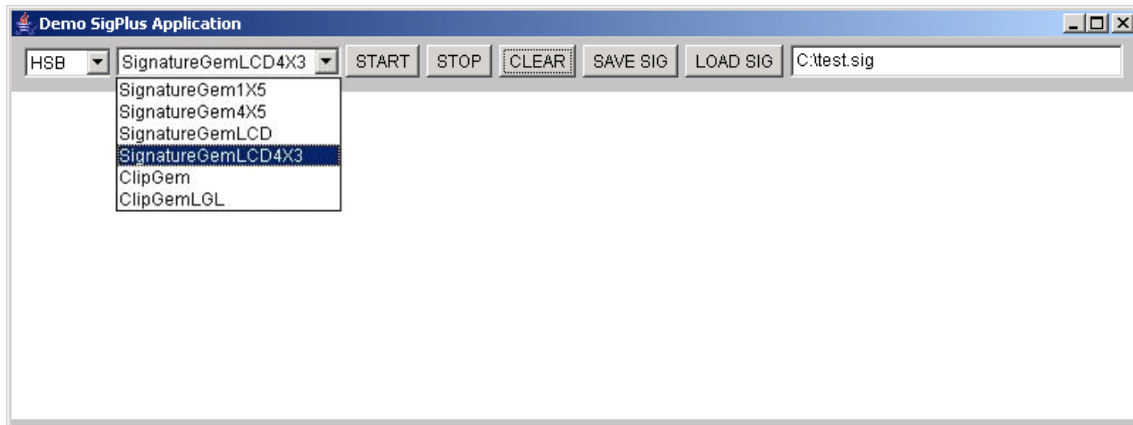
To download go to:

http://www.topazsystems.com/software/download/java/sigplusjava2_45.zip

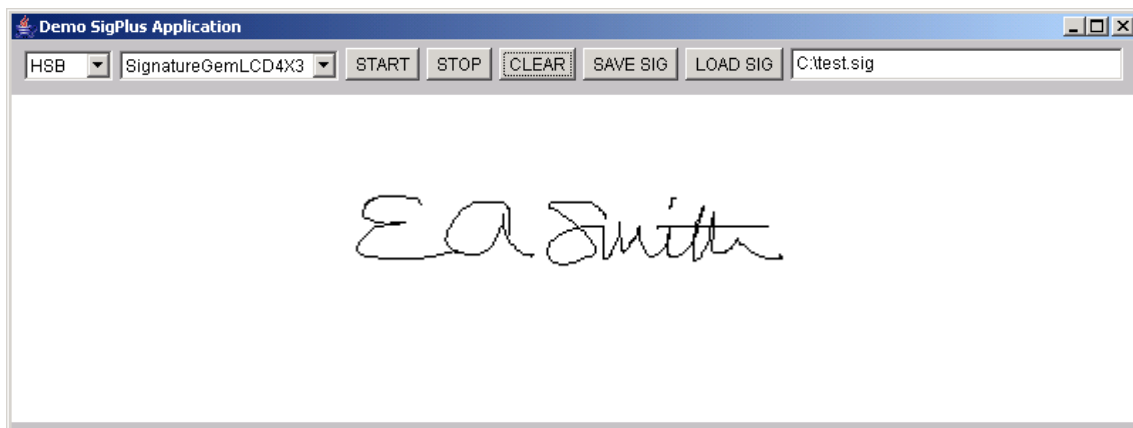
This application will show Java developers how to integrate SigPlus technology into their own applications, to export and import a signature image as a .sig file. Begin by opening SigPlusAppDemo.java in a Java runtime environment. Set the connection type (shown below) to correspond with the connection type you are using. We used an HSB tablet for the purposes of this demo documentation.



Now ensure the Tablet Model you are using corresponds to the tablet type selected by the demo application. For the purposes of this demo, we used a SignatureGemLCD4X3 tablet (shown below).



After configuring the application for use with your signature capture device, click “Start” to activate the tablet, and sign your name. Your signature will be displayed in the window (shown below). To erase your signature and start over, push “Clear.” However, if you do push “Clear,” be sure to push “Start” again before resigning. If you would like to turn the pad off, push the “Stop” button. When you are ready to save, click “Save Sig” to save your signature as a .sig file.



Your signature will be saved to the location specified in the text box on the far right of the application. The default location is C:\test.sig.

The Code

Next we will look over the Java code used to control this application. The code below creates a form for the SigPlusAppDemo using the gridbag class and the panel class. Buttons are defined to later call upon button events.

```
import java.awt.*;
import java.awt.event.*;
import java.beans.*;
import com.topaz.sigplus.*;
import javax.comm.*;
import java.io.*;
import javax.swing.*;

public class SigPlusAppDemo extends Frame implements Runnable
{
    SigPlus      sigObj = null;
    Thread       eventThread;

    public static void main( String Args[] )
    {
        SigPlusAppDemo demo = new SigPlusAppDemo();
        demo.setSize(800,300);
        demo.setVisible(true);
        demo.setBackground(Color.lightGray);
    }
    public SigPlusAppDemo()
    {
        GridBagLayout gbl = new GridBagLayout();
        GridBagConstraints gc = new GridBagConstraints();
        setLayout(gbl);
        Panel controlPanel = new Panel();
        setConstraints(controlPanel, gbl, gc, 0, 0,
            GridBagConstraints.REMAINDER, 1, 0, 0,
            GridBagConstraints.CENTER,
            GridBagConstraints.NONE,0, 0, 0, 0);
        add(controlPanel, gc);

        controlPanel.add(connectionChoice);
        controlPanel.add(connectionTablet);

        Button startButton = new Button("START");
        controlPanel.add(startButton);

        Button stopButton = new Button("STOP");
        controlPanel.add(stopButton);

        Button clearButton = new Button("CLEAR");
        controlPanel.add(clearButton);

        Button saveSigButton = new Button("SAVE SIG");
        controlPanel.add(saveSigButton);

        Button loadSigButton = new Button("LOAD SIG");
        controlPanel.add(loadSigButton);

        controlPanel.add(txtPath);

        Button okButton = new Button("QUIT");
        controlPanel.add(okButton);
    }
}
```

The code below initializes the com API. This is necessary even with HSB pads because Java expects to see the com initialized. The com driver class is only necessary while in Windows. It then uses the ClassLoader class to create a new instance of SigPlus.

```

initConnection();

String drivename = "com.sun.comm.Win32Driver";
try
    {
    CommDriver driver = (CommDriver)
    Class.forName(drivename).newInstance();
    driver.initialize();
    }
catch (Throwable th)
    {
    /* Discard it */
    }
try
    {
    ClassLoader cl =
(com.topaz.sigplus.SigPlus.class).getClassLoader();
    sigObj = (SigPlus)Beans.instantiate( cl,
"com.topaz.sigplus.SigPlus" );

    setConstraints(sigObj, gbl, gc, 0, 1,
GridBagConstraints.REMAINDER, 1, 1, 1,
GridBagConstraints.CENTER,
GridBagConstraints.BOTH, 5, 0, 5, 0);
    add(sigObj, gc);
    sigObj.setSize(100,100);
sigObj.clearTablet();
    setTitle( "Demo SigPlus Application" );

```

When the ok button, which is titled as the “Quit” button, is pushed the tablet is turned off and the application is closed.

```

    okButton.addActionListener(new ActionListener(){
    public void actionPerformed(ActionEvent e){
        sigObj.setTabletState(0);
        System.exit(0);
    }
});

```

When the “Start” button is pushed the tablet is activated to accept signatures (shown below).

```

    startButton.addActionListener(new ActionListener(){
    public void actionPerformed(ActionEvent e){
        sigObj.setTabletState(0);
        sigObj.setTabletState(1);
    }
});

```

When the “Stop” button is pushed the tablet is turned off, and no longer accepts any signatures (shown below). However, unlike the “Quit” button the application still runs.

```

    stopButton.addActionListener(new ActionListener(){
    public void actionPerformed(ActionEvent e){

```

```

        sigObj.setTabletState(0);
    }
});

```

When the “Clear” button is pushed the signature is cleared from the signature field (shown below).

```

clearButton.addActionListener(new ActionListener(){
    public void actionPerformed(ActionEvent e){
        sigObj.clearTablet();
    }
});

```

The code below saves the signature to .sig format. The filepath is set to the contents of the text box; the .sig is created, and then saved to the filepath. The signature is encrypted to the string “Sample Encryption Data.”

```

saveSigButton.addActionListener(new ActionListener(){
    public void actionPerformed(ActionEvent e){
        boolean blnExport=false;
        String path=txtPath.getText();
        int pathlength=path.length();
        if(pathlength!=0)
        {
            sigObj.autoKeyStart();
            sigObj.setAutoKeyData("Sample Encryption Data");
            sigObj.autoKeyFinish();
            sigObj.setEncryptionMode(1);
            blnExport = sigObj.exportSigFile(txtPath.getText());
            if (blnExport==false)
            {
                System.out.println("Error writing SIG file");
            }
        }
        else
        {
            System.out.println("Please type in full path information to save file");
        }
    }
});

```

The code below imports a signature back into the SigPlusApp java demo. The filepath is taken from the textbox, and the signature displayed in the window. The signature is decrypted using the string “Sample Encryption Data.”

```

loadSigButton.addActionListener(new ActionListener(){
    public void actionPerformed(ActionEvent e){
        boolean blnImport=false;
        String path=txtPath.getText();
        int pathlength=path.length();
        if(pathlength!=0)
        {
            sigObj.autoKeyStart();
            sigObj.setAutoKeyData("Sample Encryption Data");
            sigObj.autoKeyFinish();

```

```

sigObj.setEncryptionMode(1);
    blnImport = sigObj.importSigFile(txtPath.getText());
if (blnImport==false)
    {
        System.out.println("Error reading SIG file");
    }
}
else
{
    System.out.println("Please type in full path information to load file");
}
}
});
//txtPath.addTextListener(new TextListener(){
//    public void textValueChanged(TextEvent e){
//        System.out.println(txtPath.getText());
//    }
//});

```

This section of code sets the tablet model to match the selection from the drop down menu. If you use a SignatureGemLCD4X3, it must be set to SignatureGemLCD4X3New. Otherwise the choice matches the entry from the drop down list.

```

connectionTablet.addItemListener(new ItemListener(){
    public void itemStateChanged(ItemEvent e){

        if(connectionTablet.getSelectedItem() != "SignatureGemLCD4X3"){
            sigObj.setTabletModel(connectionTablet.getSelectedItem());
        }
        else{
            sigObj.setTabletModel("SignatureGemLCD4X3New"); //properly set up LCD4X3
        }
    }
});

```

The following code sets the connection type to match the selection from the drop down menu. If you select HSB it must be set to "HID1." Otherwise the choice matches the entry from the drop down list.

```

connectionChoice.addItemListener(new ItemListener(){
    public void itemStateChanged(ItemEvent e){

        if(connectionChoice.getSelectedItem() != "HSB"){
            sigObj.setTabletComPort(connectionChoice.getSelectedItem());
        }
        else{
            sigObj.setTabletComPort("HID1"); //properly set up HSB tablet
        }
    }
});

```

When you prompt the window to close this ensures the tablet is off. There are three SigPlus event handlers in SigPlus that are currently unimplemented. These are not available for the developer to use.

```
AddWindowListener( new WindowAdapter()
    {
        public void windowClosing( WindowEvent we )
            {
                sigObj.setTabletState( 0 );
                System.exit( 0 );
            }
        public void windowClosed( WindowEvent we )
            {
                System.exit( 0 );
            }
    } );
sigObj.addSigPlusListener( new SigPlusListener()
    {
        public void handleTabletTimerEvent( SigPlusEvent0 evt )
            {
            }

        public void handleNewTabletData( SigPlusEvent0 evt )
            {
            }

        public void handleKeyPadData( SigPlusEvent0 evt )
            {
            }
    } );
```

This next section selects the defaults. A thread called eventThread is then created to run the application.

```
        show();
sigObj.setTabletModel("SignatureGem1X5");
sigObj.setTabletComPort("COM1");
        eventThread = new Thread(this);
        eventThread.start();
    }
catch ( Exception e )
    {
        return;
    }
}}
public void run()
    {
    try
        {
        while ( true )
            {
            Thread.sleep(100);
```

```

        }
    }
    catch (InterruptedException e)
    { }
}

```

The code below sets the default for the filepath for saving and loading .sig.

```

        TextField txtPath = new TextField("C:\\test.sig", 30);
    
```

The code below creates and defines the items of the drop down menu for connection type choices.

```

        Choice connectionChoice = new Choice();
        protected String[] connections =
        {
            "COM1",
            "COM2",
            "COM3",
            "COM4",
            "USB",
            "HSB",
        };
    
```

The code below creates and defines the items in the drop down menu for tablet type choices.

```

        Choice connectionTablet = new Choice();
        protected String[] tablets =
        {
            "SignatureGem1X5",
            "SignatureGem4X5",
            "SignatureGemLCD",
            "SignatureGemLCD4X3",
            "ClipGem",
            "ClipGemLGL",
        };
    
```

The following code specifies how many choices there will be for the menus above.

```

        private void initConnection()
        {
            for(int i = 0; i < connections.length; i++)
            {
                connectionChoice.add(connections[i]);
            }
            for(int i = 0; i < tablets.length; i++)
            {
                connectionTablet.add(tablets[i]);
            }
        }
    
```

Dependencies and Files Necessary to Run This Demo

Jar files must be included in the CLASSPATH

1. SigPlus2_xx.jar (at the creation of this document the current version was 2_45)
2. Comm.jar (This file will vary depending on OS, you will need the correct java com API for your OS.)

Additional Files

1. (Win)- Win32com.dll must reside in the System32 folder
2. (HSB in Win) – SigUsb.dll must reside in the System32 folder

For more information regarding products and support, please visit the Topaz web site at <http://www.topazsystems.com>