

Topaz Systems, Inc.
Demo OCX How-To

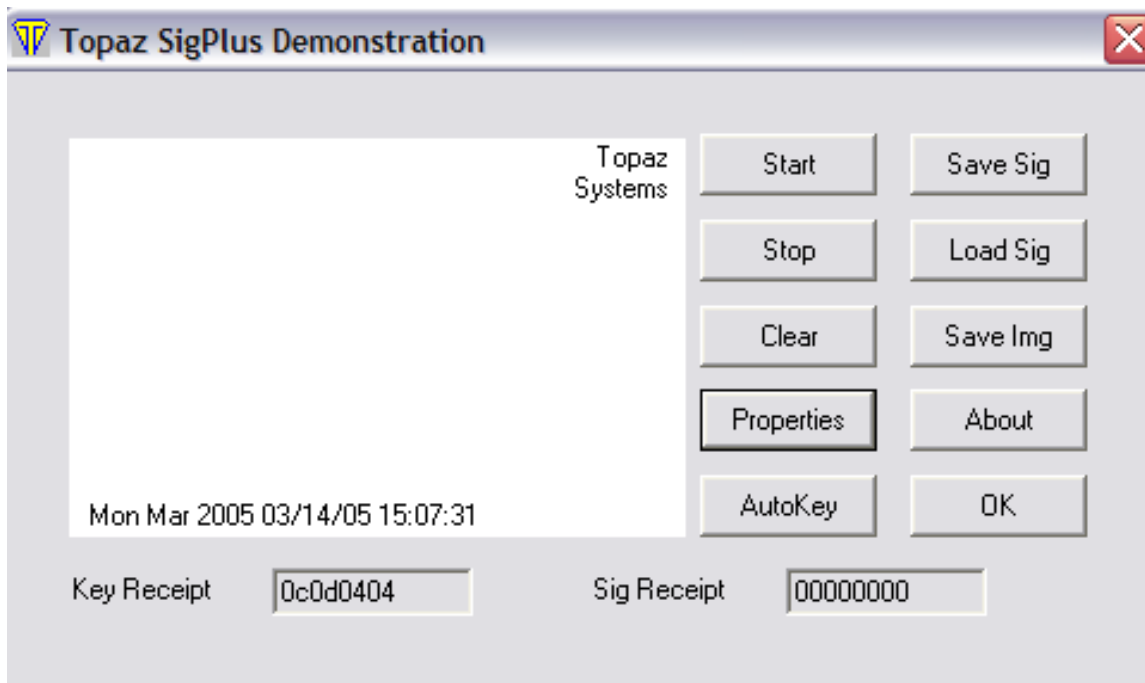
Topaz Systems, Inc.
650 Cochran Street, Unit 6
Simi Valley, CA, 93065

www.topazsystems.com
tech support: 805 520-8286
support@topazsystems.com

©1995-2005, all rights reserved, US patent 6,307,955, and pending

Demo.OCX is a Topaz tablet testing application that provides full tablet functionality testing, using the SigPlus ActiveX control. **Demo.OCX is strictly a testing tool. It is not designed as an application and settings changed within Demo.OCX DO NOT transfer to SigPlus or other Topaz applications and tools.**

When Demo.OCX is started the 'Topaz SigPlus Demonstration' window.



From this window the user can test and explore the full functionality offered through the SigPlus ActiveX.

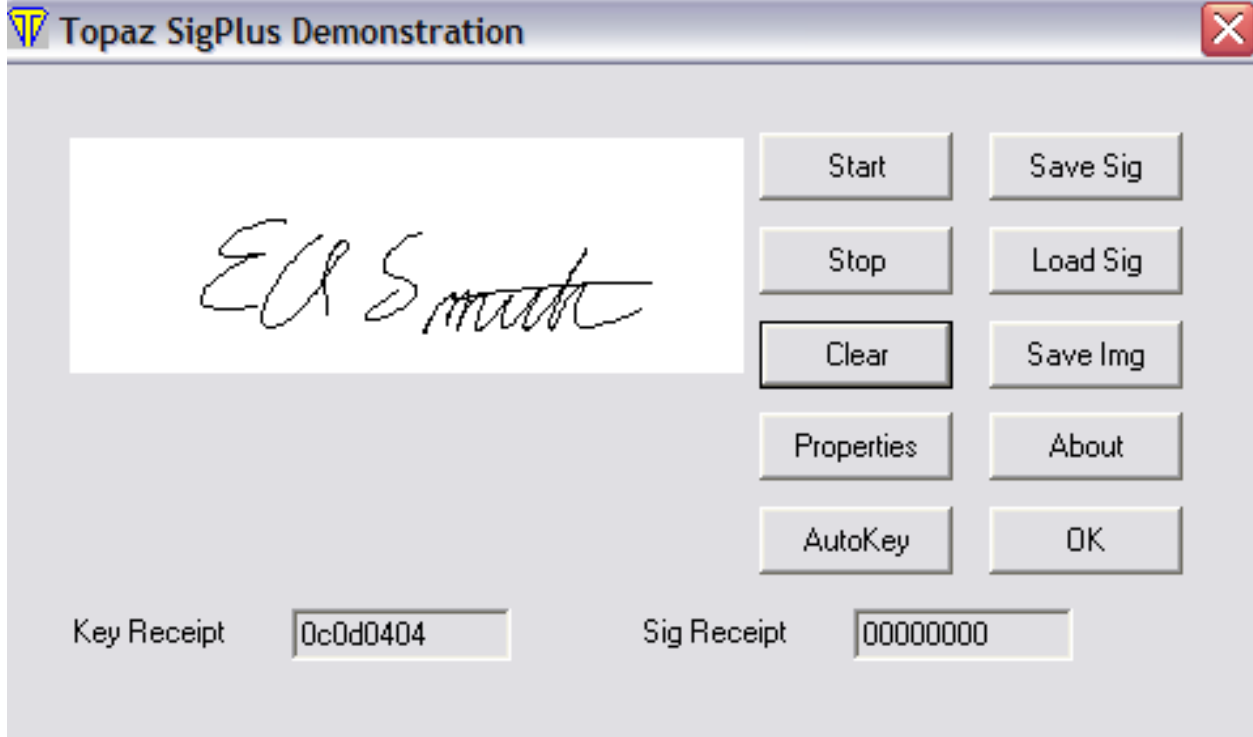
'Start'- Start will initialize signature capture within Demo.OCX, opening the specified port. After clicking on 'Start' the user only needs to sign on the Topaz signature pad. The signature will appear in the white signature box in real-time.

Topaz Systems, Inc.
Demo OCX How-To

Topaz Systems, Inc.
650 Cochran Street, Unit 6
Simi Valley, CA, 93065

www.topazsystems.com
tech support: 805 520-8286
support@topazsystems.com

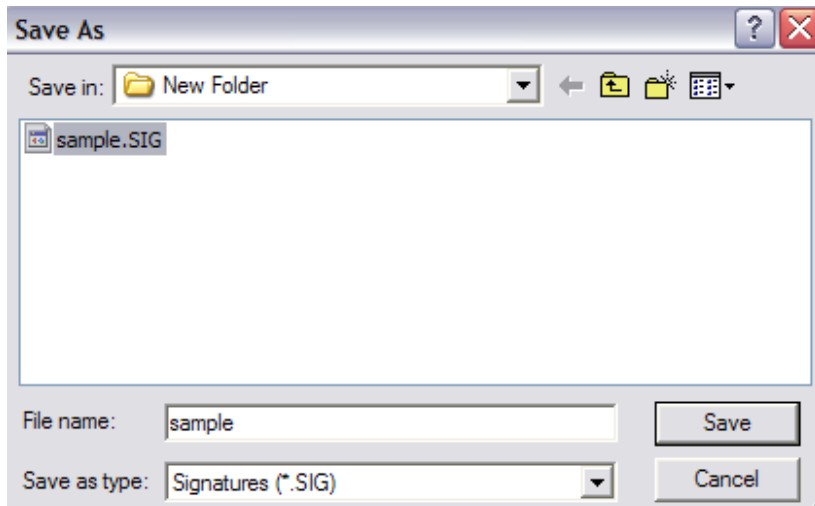
©1995-2005, all rights reserved, US patent 6,307,955, and pending



‘Stop’- Clicking on ‘Stop’ will end the signature instance and close the port for signature capture.

‘Clear’- Clicking on ‘Clear’ will clear the signature from the signature box

‘SaveSig’- Clicking on ‘SaveSig’ allows the user to save the signature as a .SIG File. Simply name the signature and click ‘Save’ and the signature will be saved according to all the settings of Demo.OCX



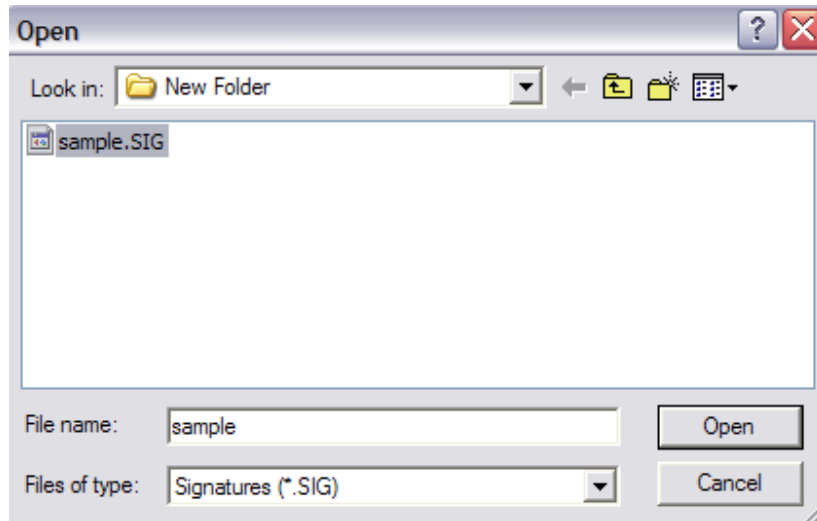
Topaz Systems, Inc.
Demo OCX How-To

Topaz Systems, Inc.
650 Cochran Street, Unit 6
Simi Valley, CA, 93065

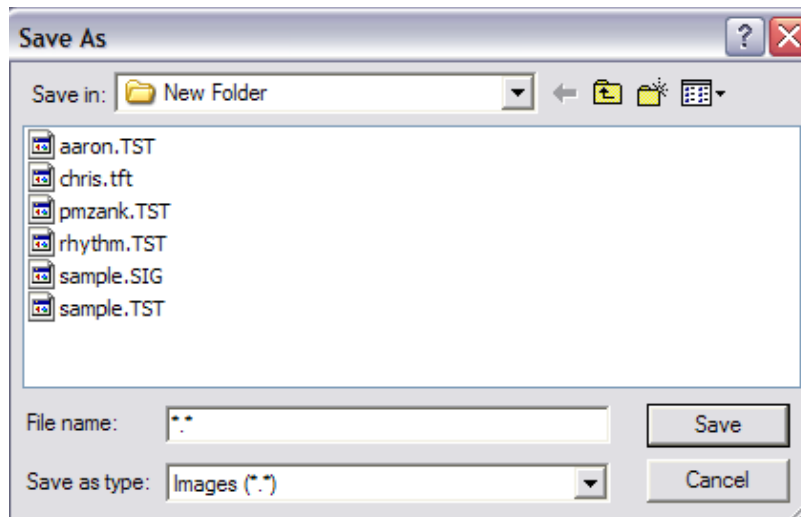
www.topazsystems.com
tech support: 805 520-8286
support@topazsystems.com

©1995-2005, all rights reserved, US patent 6,307,955, and pending

‘LoadSig’- Clicking on ‘LoadSig’ will allow the user to allow a saved .SIG file into Demo.OCX. A window will be opened for the user to choose a file. Click on ‘Open’ and the signature will be loaded and will appear in the signature box.



‘SaveImg’- Clicking ‘SaveImg’ will allow the user to save the signature as an image file. A window will open, start by naming the file with the proper extension. Demo.OCX will not save the file unless the user specifies what type of image file to save the signature as with the proper file extension. The types of files and corresponding extensions are: Bitmap (.BMP), JPEG (.JPG), Tiff (.TIF), Windows Meta File (.WMF) and Enhanced Meta File (.EMF). **The extension MUST be specified for the SaveImg function to work.** Once the file has been named simply click ‘Save’ and the signature will be saved as an image file.

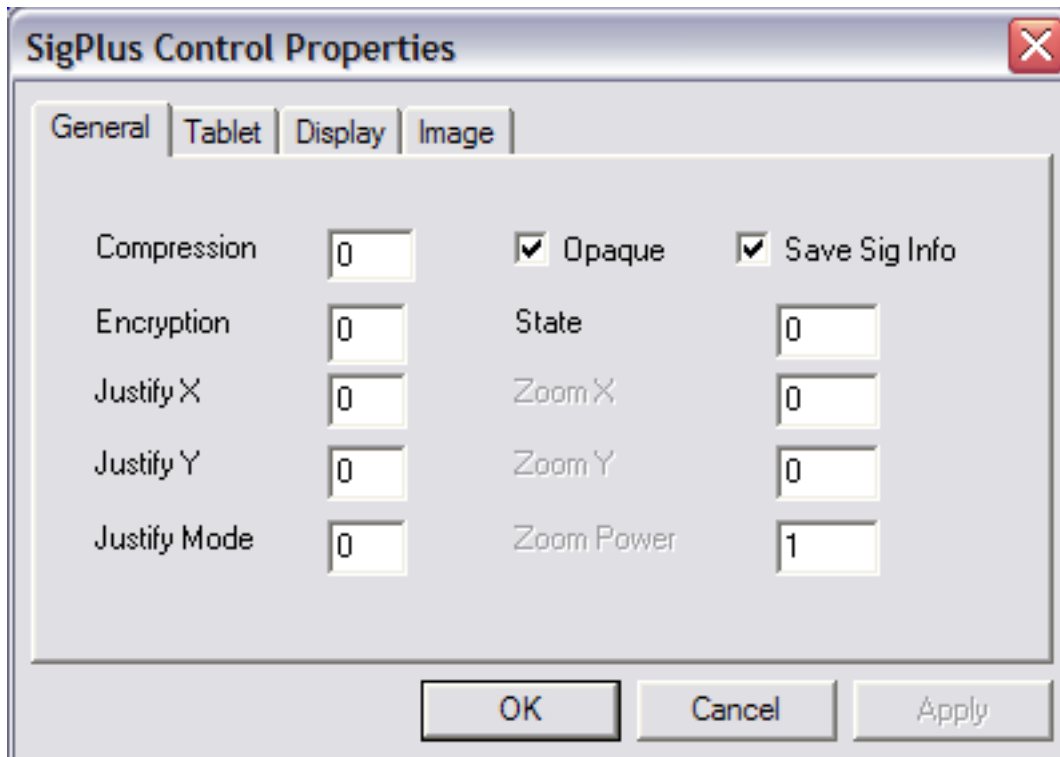


Topaz Systems, Inc.
650 Cochran Street, Unit 6
Simi Valley, CA, 93065

www.topazsystems.com
tech support: 805 520-8286
support@topazsystems.com

©1995-2005, all rights reserved, US patent 6,307,955, and pending

‘Properties’- Clicking the ‘Properties’ button will open a window to allow the user to make a number of choices regarding the settings of how signatures are captured, displayed, and saved. All of the settings in the ‘SigPlus Control Properties’ correspond to settings within the SigPlus.INI file. **For more information regarding SigPlus.INI and its relation to SigPlus and tablet functionality see the *SigPlus.INI* section at the end of this document.**



These are the settings and what they do that are found in the ‘General’ tab.

‘Compression’ - Sets the current compression mode for signatures. 0= no compression, 1= lossless compression with compacted data format, 2-8= compression ratio of signature stored in in .sig file where 2=1KB typ, 4=500 byte typ, and 8=250 byte typ. Topaz Systems does not recommend compressing beyond setting 1 unless size is more important than signature quality.

‘Encryption’ - Sets the encryption mode, 0= no encryption, 1= medium encryption, 2=higher security encryption mode.

‘JustifyX’ - Sets the buffer size in Logical Tablet Coordinates of "dead space" of left and right edge of SigPlus object in pixels if JustifyMode is 1-5.

Topaz Systems, Inc.
Demo OCX How-To

Topaz Systems, Inc.
650 Cochran Street, Unit 6
Simi Valley, CA, 93065

www.topazsystems.com
tech support: 805 520-8286
support@topazsystems.com

©1995-2005, all rights reserved, US patent 6,307,955, and pending

'JustifyY' - Sets the buffer size in Logical Tablet Coordinates of "dead space" of top and bottom edge of SigPlus object if DisplayJustifyMode is 1-5.

'JustifyMode' - The current justification mode- how the signature is sized and positioned in the signature box. 0-normal no justification, 1-justify and zoom signature (upper left corner) 2-justify and zoom signature (upper right corner) 3-justify and zoom signature (lower left corner) 4-justify and zoom signature (lower right corner) 5-justify and zoom signature (center of control)

'Opaque' - Checked means signature will be displayed on an opaque background, not checked the signature will appear on a transparent background.

'SaveSigInfo' - Checked means that the timestamp and annotate data will be saved in the signature, not checked means it won't.

'State' - The state is set by clicking on 'Start' or 'Stop'. 1-open for signature capture, 0 closed.

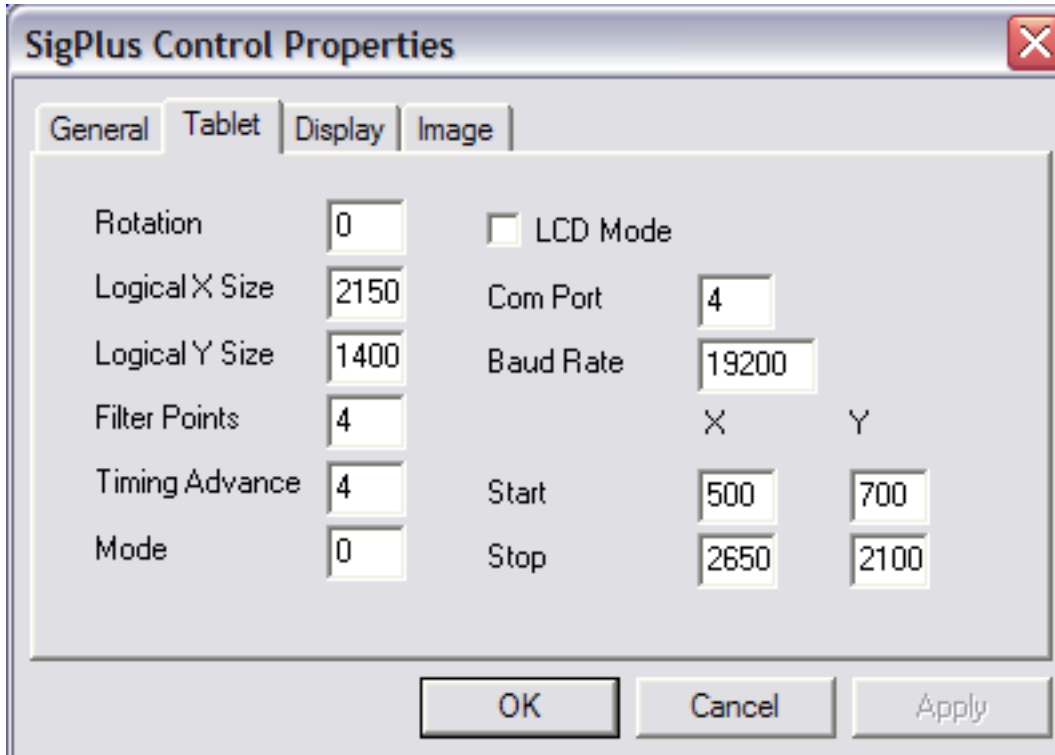
'ZoomX' - Not currently implemented

'ZoomY' - Not currently implemented

'Zoom Power' - Not currently implemented

Topaz Systems, Inc.
650 Cochran Street, Unit 6
Simi Valley, CA, 93065
©1995-2005, all rights reserved, US patent 6,307,955, and pending

www.topazsystems.com
tech support: 805 520-8286
support@topazsystems.com



This is the 'Tablet' tab of the 'SigPlus Control Properties' window.

'Rotation'- Sets the orientation on a 360 degree axis for display of tablet data. The data in the sig representation is stored in the native tablet orientation. Allowed values are 0, 90, 180, 270.

'LogicalX Size'- The horizontal values used in representing signatures in Logical Tablet Coordinates which by default are set to TabletXStop minus TabletXStart.

'LogicalYSize' - The vertical values used in representing signatures in Logical Tablet Coordinates which by default are set to TabletYStop minus TabletYStart.

'Filter Points'- an internal property associated with tablet model

'TimingAdvance'- an internal property associated with tablet model

'Mode'- Refers to the type of connection that the user is utilizing. 0-serial, 2-USB, 6-HSB.

Topaz Systems, Inc.
650 Cochran Street, Unit 6
Simi Valley, CA, 93065
©1995-2005, all rights reserved, US patent 6,307,955, and pending

www.topazsystems.com
tech support: 805 520-8286
support@topazsystems.com

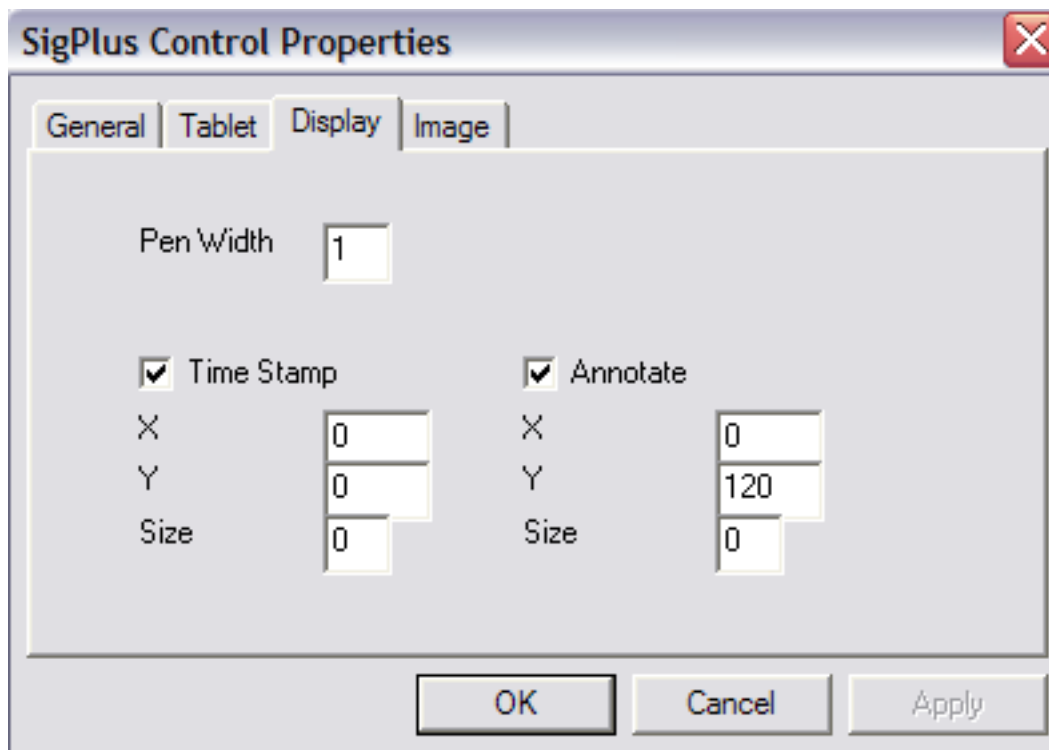
'LCD Mode' - This setting is for use with Topaz PaperGem and TracGem signature tablets.

'ComPort' - Denotes which COM port the Topaz tablet is utilizing (not needed for USB or HSB tablets)

'BaudRate' - Set in hardware, and cannot be changed, however, if the user has a special Topaz tablet (like a 38400 baud LCD4X3, for example) they can set the corresponding baud rate here .

'Start' - This denotes the top left corner of the signature box in logical tablet coordinates.

'Stop' - This denotes the bottom right corner of the signature box in logical tablet coordinates.



This is the 'Display' tab in the 'SigPlus Control Properties' window.

'PenWidth' - The thickness of the pen stroke in pixels

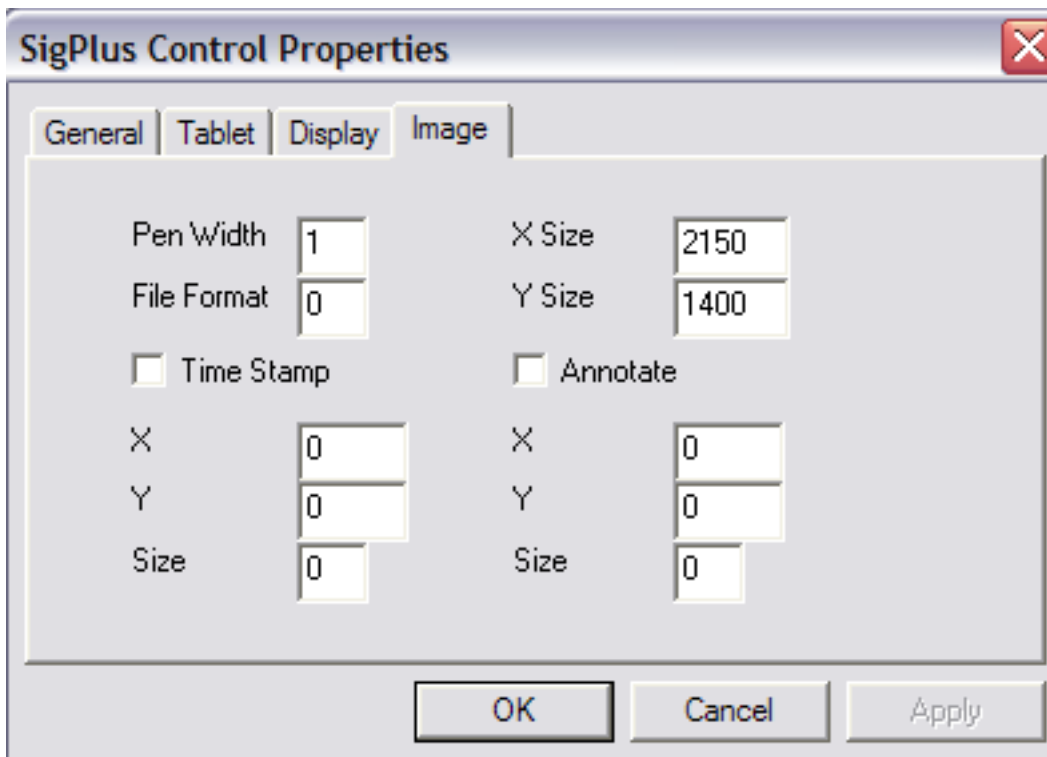
Topaz Systems, Inc.
650 Cochran Street, Unit 6
Simi Valley, CA, 93065

www.topazsystems.com
tech support: 805 520-8286
support@topazsystems.com

©1995-2005, all rights reserved, US patent 6,307,955, and pending

'TimeStamp'- Checking this means the time stamp will be displayed with the signature. The 'X' and 'Y' values below it denote it's starting location in tablet coordinates. The 'Size' value denotes the size the timestamp will be in pixels. If the value is 0 then the time stamp will be 7.5% of the Y size of the signature box.

'Annotate'- Checking this means the annotation will be displayed with the signature. The 'X' and 'Y' values below it denote it's starting location in tablet coordinates. The 'Size' value denotes the size the annotation will be in pixels. If the value is 0 then the annotation will be 7.5% of the Y size of the signature box.



This is the 'Image' tab for the 'SigPlus Control Properties'. These settings deal specifically with how signatures saved as images appear.

'PenWidth'- The thickness of pen stroke in pixels

'FileFormat'- Format the image file will be saved as. 0-compressed Bitmap, must have .BMP extension, 1-uncompressed Bitmap, must have .BMP extension, 2-Mono Bitmap, must have .BMP extension, 3- JPG quality=20, must have .JPG extension, 4- JPG quality=100, must have .JPG extension, 5-uncompressed Tiff, must have .TIF extension, 6-compressed Tiff, must have .TIF extension, 7-Windows Meta File, must have .WMF extension, 8- Enhanced Meta File, must have .EMF extension, 9- Black and White Tiff, must have .TIF extension.

Topaz Systems, Inc.
Demo OCX How-To

Topaz Systems, Inc.
650 Cochran Street, Unit 6
Simi Valley, CA, 93065

www.topazsystems.com
tech support: 805 520-8286
support@topazsystems.com

©1995-2005, all rights reserved, US patent 6,307,955, and pending

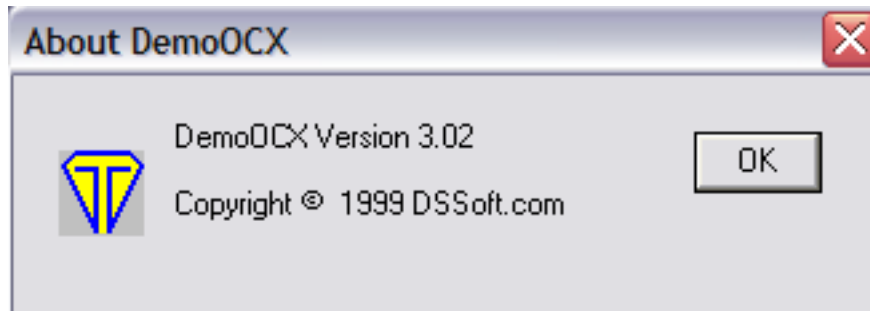
'XSize' - Size in X pixels of the Image width.

'YSize' - Size in Y pixels of the Image width.

'TimeStamp' - Checking this means the time stamp will be displayed with the signature in the image file. The 'X' and 'Y' values below it denote it's starting location in tablet coordinates. The 'Size' value denotes the size the timestamp will be in pixels. If the value is 0 then the time stamp will be 7.5% of the Y size of the signature box.

'Annotate' - Checking this means the annotation will be displayed with the signature in the image file. The 'X' and 'Y' values below it denote it's starting location in tablet coordinates. The 'Size' value denotes the size the annotation will be in pixels. If the value is 0 then the annotation will be 7.5% of the Y size of the signature box.

'About' - This generates a small window regarding copyright and developer information.



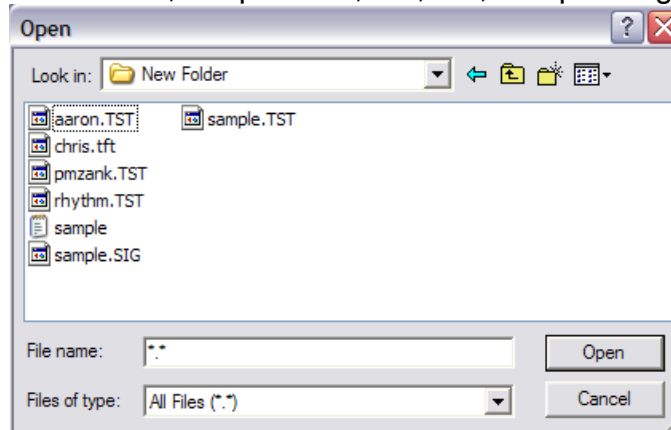
'AutoKey' - This function allows for a .SIG file to be encrypted and tied to another file, such as a text file or Word document (or any file). To accomplish this, begin by clicking 'Start' and signing. Once the signature is complete click on 'AutoKey', this will generate an 'Open' window.

Topaz Systems, Inc.
Demo OCX How-To

Topaz Systems, Inc.
650 Cochran Street, Unit 6
Simi Valley, CA, 93065

www.topazsystems.com
tech support: 805 520-8286
support@topazsystems.com

©1995-2005, all rights reserved, US patent 6,307,955, and pending



From this window choose which file you wish to attach the signature to, such as a text file like sample.txt in this instance. Click 'Open'. This will return you to the 'Topaz SigPlus Demonstration' window. Now change the encryption setting to 0 or 1 (see above), make sure that before attempting the 'AutoKey' function to have the encryption setting at 0 before beginning. Once the encryption setting has been set, click 'SaveSig' and save the signature (see above). Once the file is saved it will be encrypted and tied to the file chosen.

To check that the signature has been successfully tied to the file, follow these steps. Click on 'AutoKey', again an 'Open' window will appear, choose what file the signature was tied to. Click 'Open', now set the encryption mode to what it was set when performing the 'AutoKey' function (see above). Now load the signature (see above). If the file has not been altered and the encryption setting is correct the signature will be loaded and appear in the signature box. If something has changed within the file or a setting then the signature will simply not load, leaving the signature box blank.

'OK'- Clicking OK will end the demonstration and close Demo.OCX

'Key Receipt'- This is an eight-digit number that represents the document a signature is encrypted and tied to after it is run through a hashing algorithm.

'SigReceipt'- This is an eight-digit distillation of only the signature after it is ran through the hashing algorithm.

Topaz Systems, Inc.
650 Cochran Street, Unit 6
Simi Valley, CA, 93065

www.topazsystems.com
tech support: 805 520-8286
support@topazsystems.com

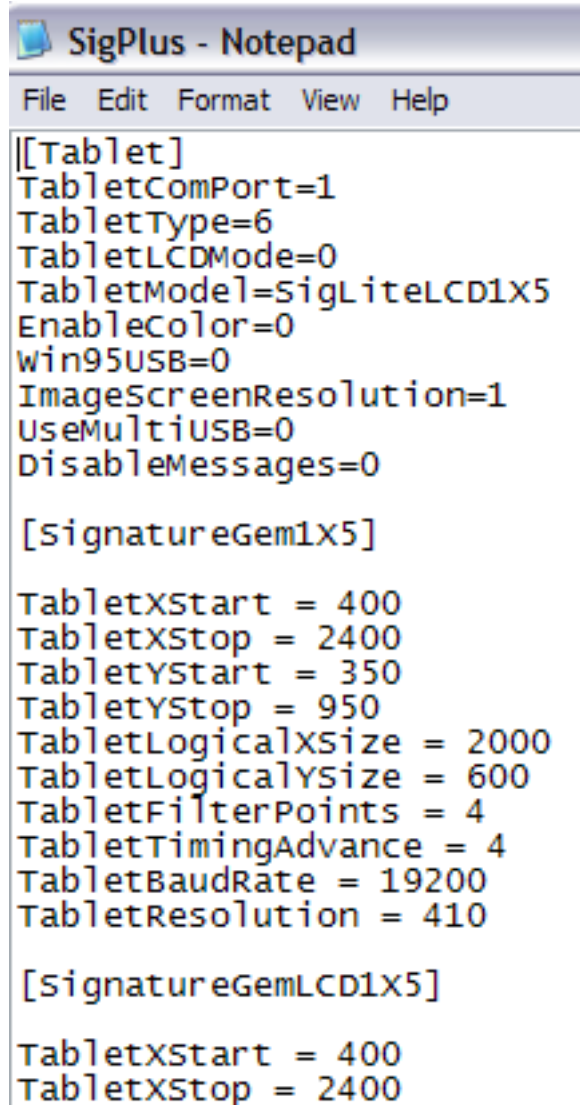
©1995-2005, all rights reserved, US patent 6,307,955, and pending

SigPlus.INI

All of the settings within the Demo.OCX program correspond to settings in the SigPlus.INI file. The settings within SigPlus.INI determine how SigPlus and other Topaz applications perform. Though the settings a user may set within Demo.OCX **DO NOT** transfer to other Topaz applications, those settings can be changed within the SigPlus.INI which will change the way a Topaz application will perform.

The SigPlus.INI file is located in the WINDOWS (or WIN) directory. To make changes to the SigPlus.INI file the user must open it in a text editor such as Notepad, and must remember to save the document after any changes are made. To the right is a sample how part of the SigPlus.INI looks.

There are many sections within the SigPlus.INI file and each section is denoted by being in brackets, such as [Tablet], and [SignatureGem1X5]. There are sections for general tablet settings as well as settings for individual models of tablets as well.



```
[[Tablet]
TabletComPort=1
TabletType=6
TabletLCDMode=0
TabletModel=SigLiteLCD1X5
EnableColor=0
win95USB=0
ImageScreenResolution=1
UseMultiUSB=0
DisableMessages=0

[SignatureGem1X5]

TabletXStart = 400
TabletXStop = 2400
TabletYStart = 350
TabletYStop = 950
TabletLogicalXSize = 2000
TabletLogicalYSize = 600
TabletFilterPoints = 4
TabletTimingAdvance = 4
TabletBaudRate = 19200
TabletResolution = 410

[SignatureGemLCD1X5]

TabletXStart = 400
Tab]etXStop = 2400
```