

Topaz Systems, Inc.
SigCompare How To

Topaz Systems, Inc.
650 Cochran Street, Unit 6
Simi Valley, CA, 93065
©1995-2005, all rights reserved, US patent 6,307,955, and pending

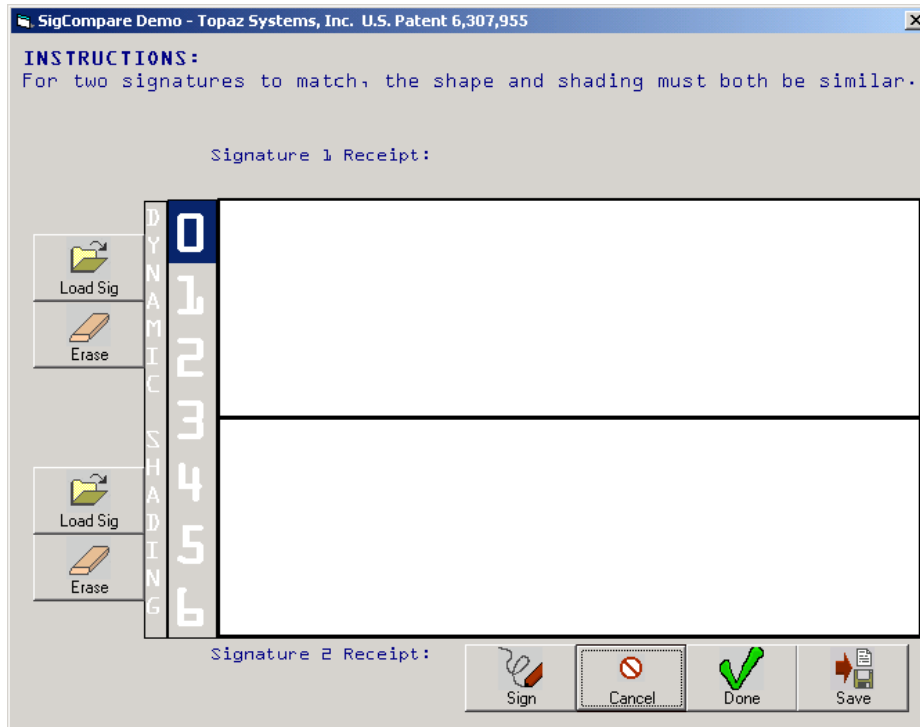
www.topazsystems.com
tech support: 805 520-8286
support@topazsystems.com

Description:

SigCompare.ocx is an ActiveX control that allows the developer to visually compare, side-to-side, two Topaz signatures. The primary purpose of SigCompare is to bring visual signature authentication capability into custom applications. SigCompare is covered by US Patent 6,307,955. In addition to a side-by-side display of signatures, this tool provides 6 additional levels of Dynamic Shading. Dynamic shading is used to redraw the signature with ink thickness based upon capture velocity. Areas where the author signed slower appear thicker. Areas where the velocity of the pen was increased appear thinner. Velocity plays a key role in signature biometrics, and because SigCompare provides visual cues as to the signature's velocity, visual signature comparison speed and accuracy is greatly increased.

Though SigCompare.ocx contains the full functionality required to visually compare signatures, SigCompare.ocx is a tool used to customize applications for signature comparison.

Using SigCompare



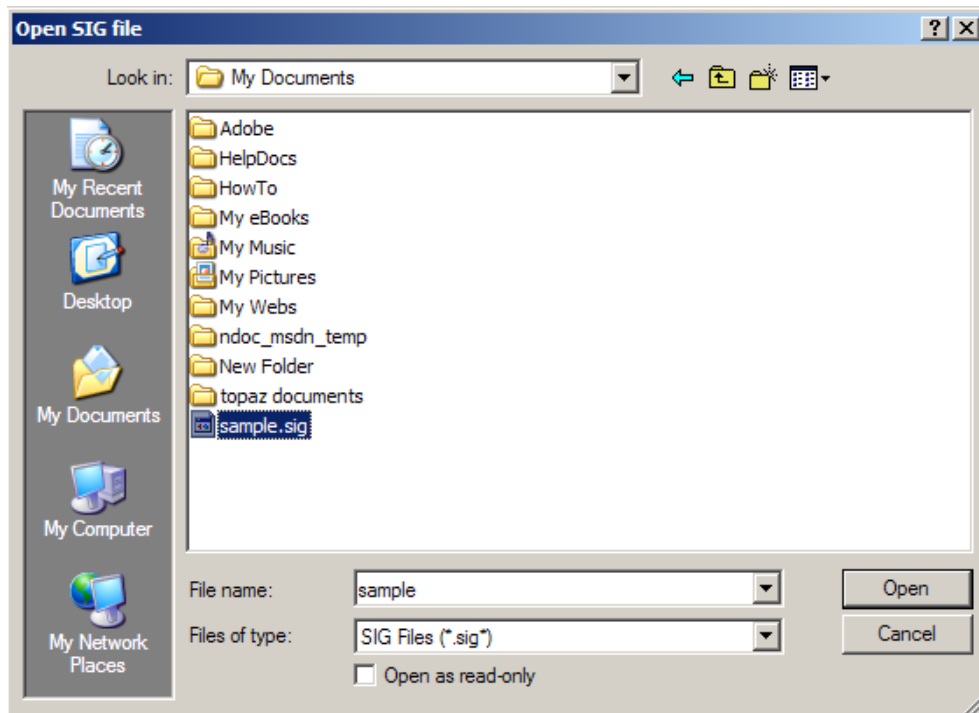
Topaz Systems, Inc.
SigCompare How To

Topaz Systems, Inc.
650 Cochran Street, Unit 6
Simi Valley, CA, 93065
©1995-2005, all rights reserved, US patent 6,307,955, and pending

www.topazsystems.com
tech support: 805 520-8286
support@topazsystems.com

To begin, a given signature known to be from the user should be captured and stored. This signature will be used as the basis for any future comparisons.

After starting SigCompare, the main window will be opened. Here the user can load the saved signature to use as the basis for the comparison into the top window. To do this simply click on the 'Load Sig' button, this will open an 'Open' window. Choose the appropriate .SIG file to be loaded.

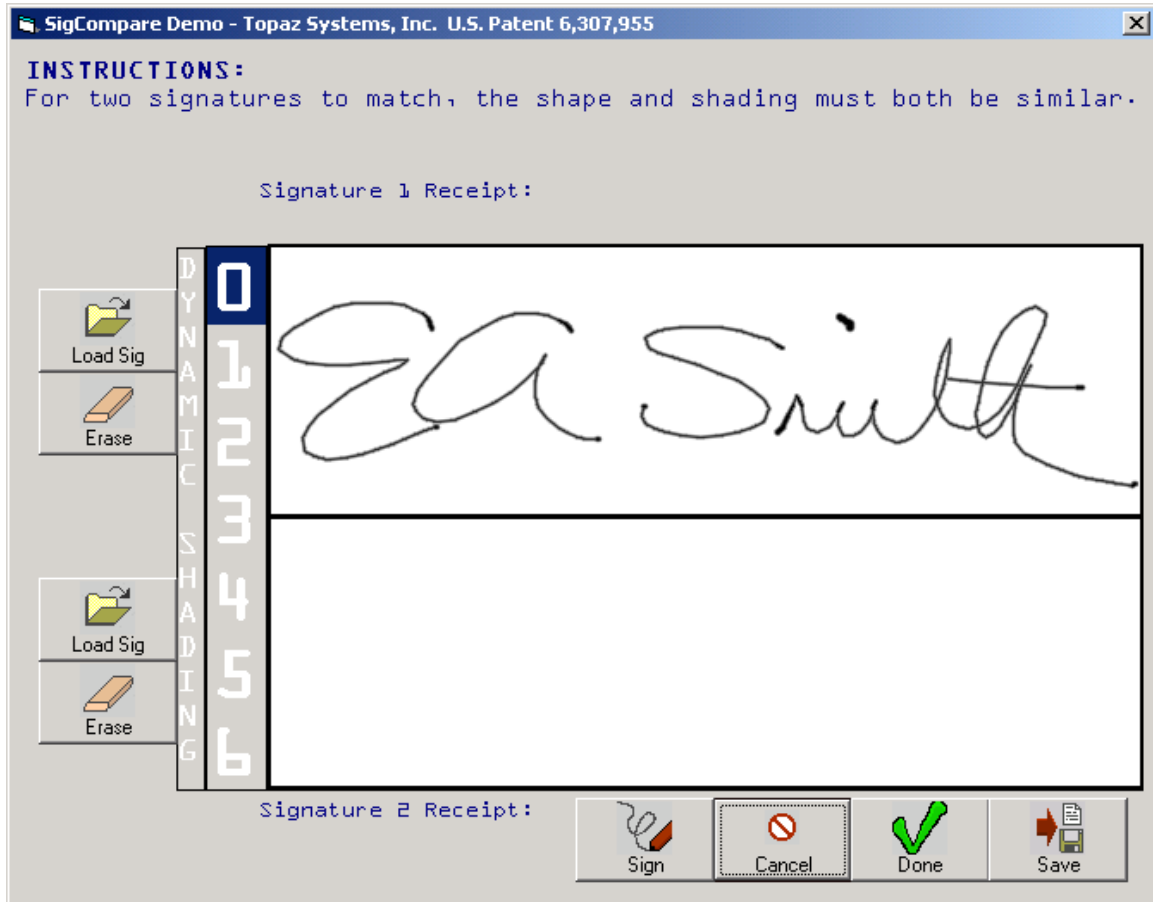


Once the users saved signature (in the .SIG format) is opened it will appear in the appropriate 'Signature 1' window.

Topaz Systems, Inc.
SigCompare How To

Topaz Systems, Inc.
650 Cochran Street, Unit 6
Simi Valley, CA, 93065
©1995-2005, all rights reserved, US patent 6,307,955, and pending

www.topazsystems.com
tech support: 805 520-8286
support@topazsystems.com

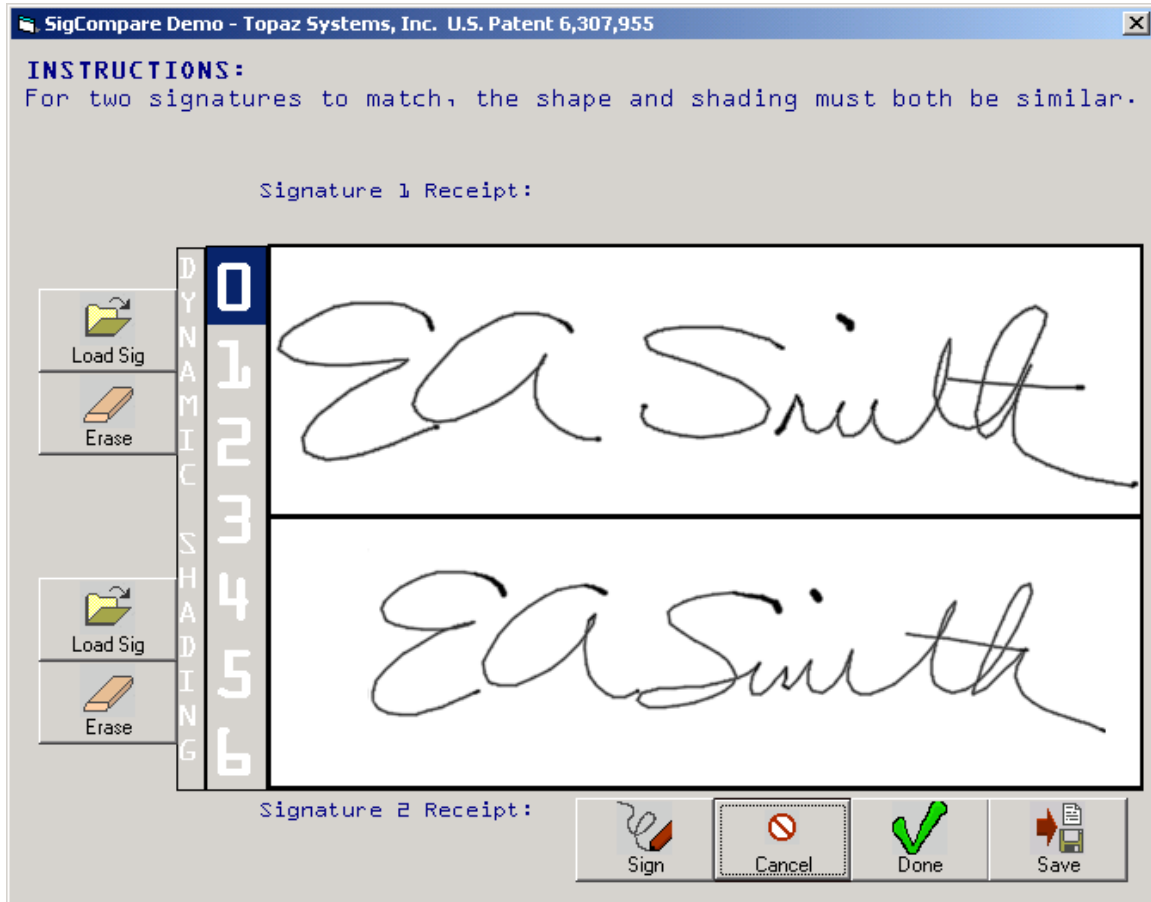


Now that the original signature is open, click on 'Sign' to allow a new signature to be entered. This new signature will appear in the 'Signature 2' box.

Topaz Systems, Inc.
SigCompare How To

Topaz Systems, Inc.
650 Cochran Street, Unit 6
Simi Valley, CA, 93065
©1995-2005, all rights reserved, US patent 6,307,955, and pending

www.topazsystems.com
tech support: 805 520-8286
support@topazsystems.com

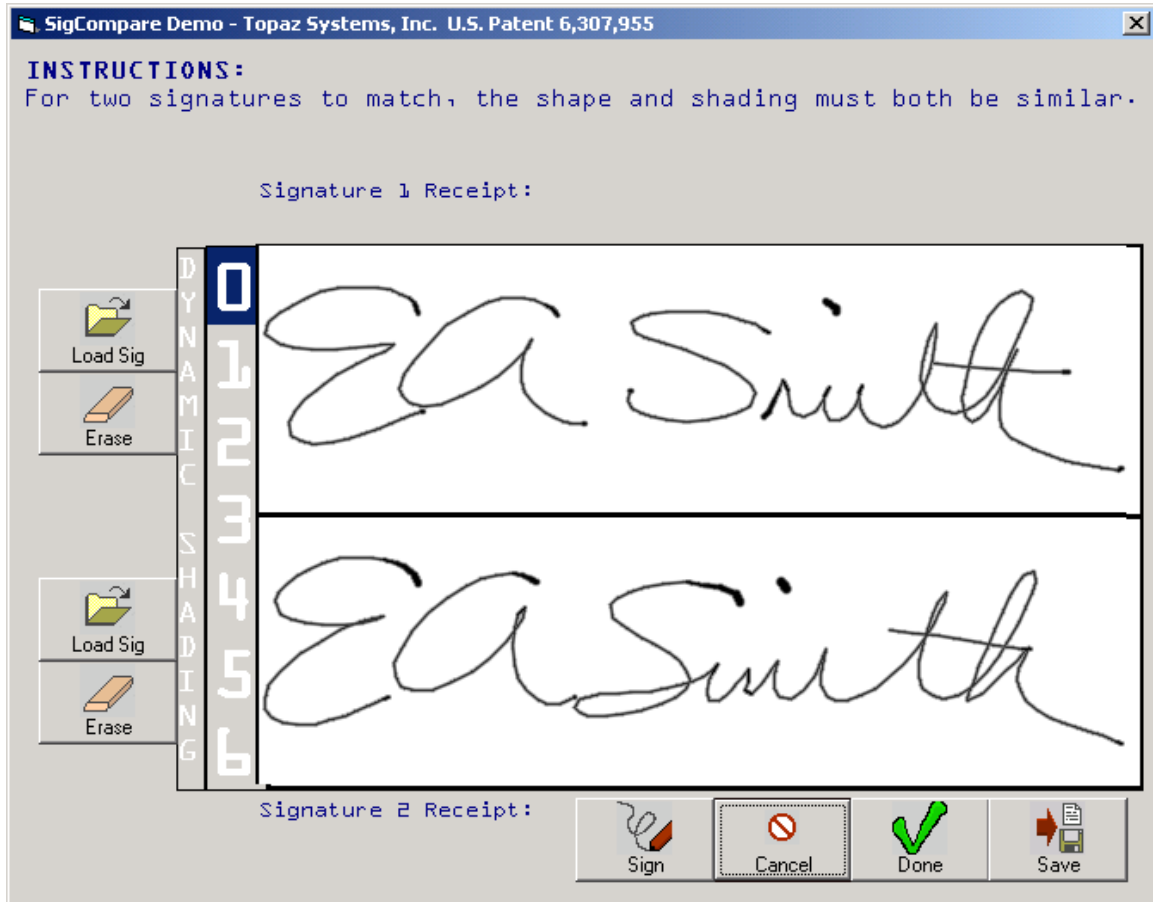


Notice how the signature in the 'Signature 2' box appears to be a smaller signature than the one in the 'Signature 1' box. Click the 'Done' button if satisfied with the signature. If for some reason you are not satisfied, simply click 'Erase' and the signature will be cleared from the box and the user can sign again. If the user wants to cancel the signing instance, simply click on the 'Cancel' button. If the signing instance is canceled, clicking 'Sign' again will be required to enter another signature. Once the user clicks 'Done' the signature will be processed and magnified.

Topaz Systems, Inc.
SigCompare How To

Topaz Systems, Inc.
650 Cochran Street, Unit 6
Simi Valley, CA, 93065
©1995-2005, all rights reserved, US patent 6,307,955, and pending

www.topazsystems.com
tech support: 805 520-8286
support@topazsystems.com

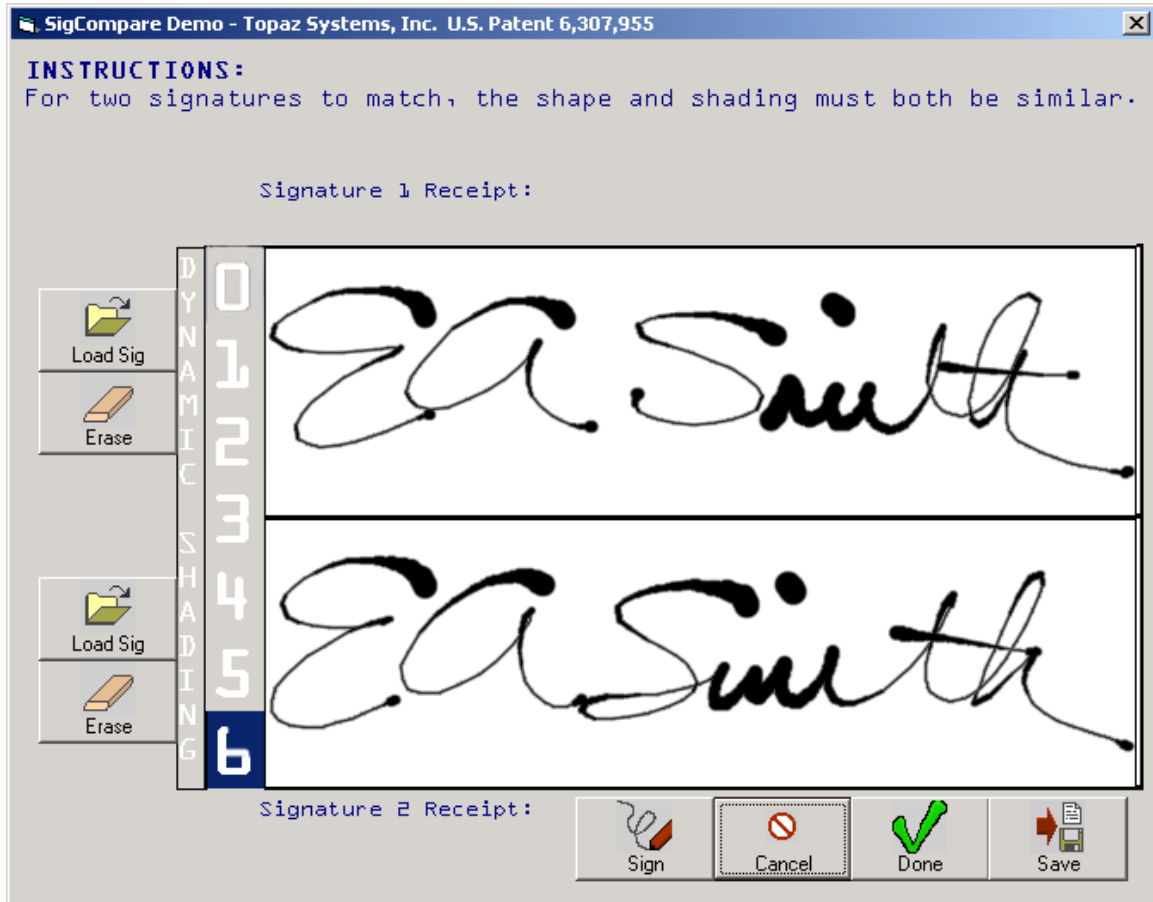


Once the signatures have been entered the administrator can now use the dynamic shading settings to visually compare the signatures.

Topaz Systems, Inc.
SigCompare How To

Topaz Systems, Inc.
650 Cochran Street, Unit 6
Simi Valley, CA, 93065
©1995-2005, all rights reserved, US patent 6,307,955, and pending

www.topazsystems.com
tech support: 805 520-8286
support@topazsystems.com



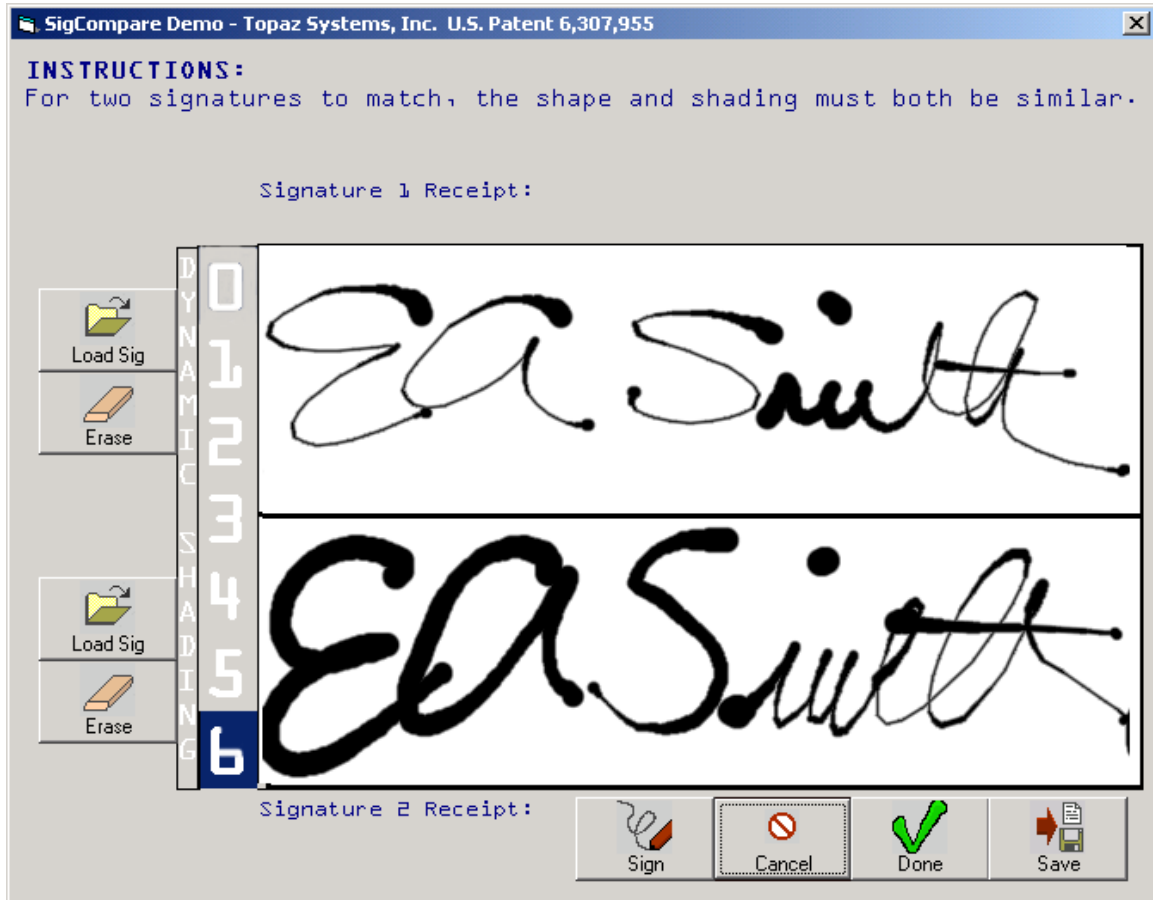
With the dynamic shading set at 6 (the numbers directly to the left of the signature boxes) it becomes clear that this signatures is not a forgery. The upper reference signature is used to compare the authenticity of the lower questioned signature. The lower signature is very likely to be true because it is similar in shape and dynamic shading to the reference; but not identical to the reference.

On the other hand, examining the below example shows what an obvious forgery might look like.

Topaz Systems, Inc.
SigCompare How To

Topaz Systems, Inc.
650 Cochran Street, Unit 6
Simi Valley, CA, 93065
©1995-2005, all rights reserved, US patent 6,307,955, and pending

www.topazsystems.com
tech support: 805 520-8286
support@topazsystems.com



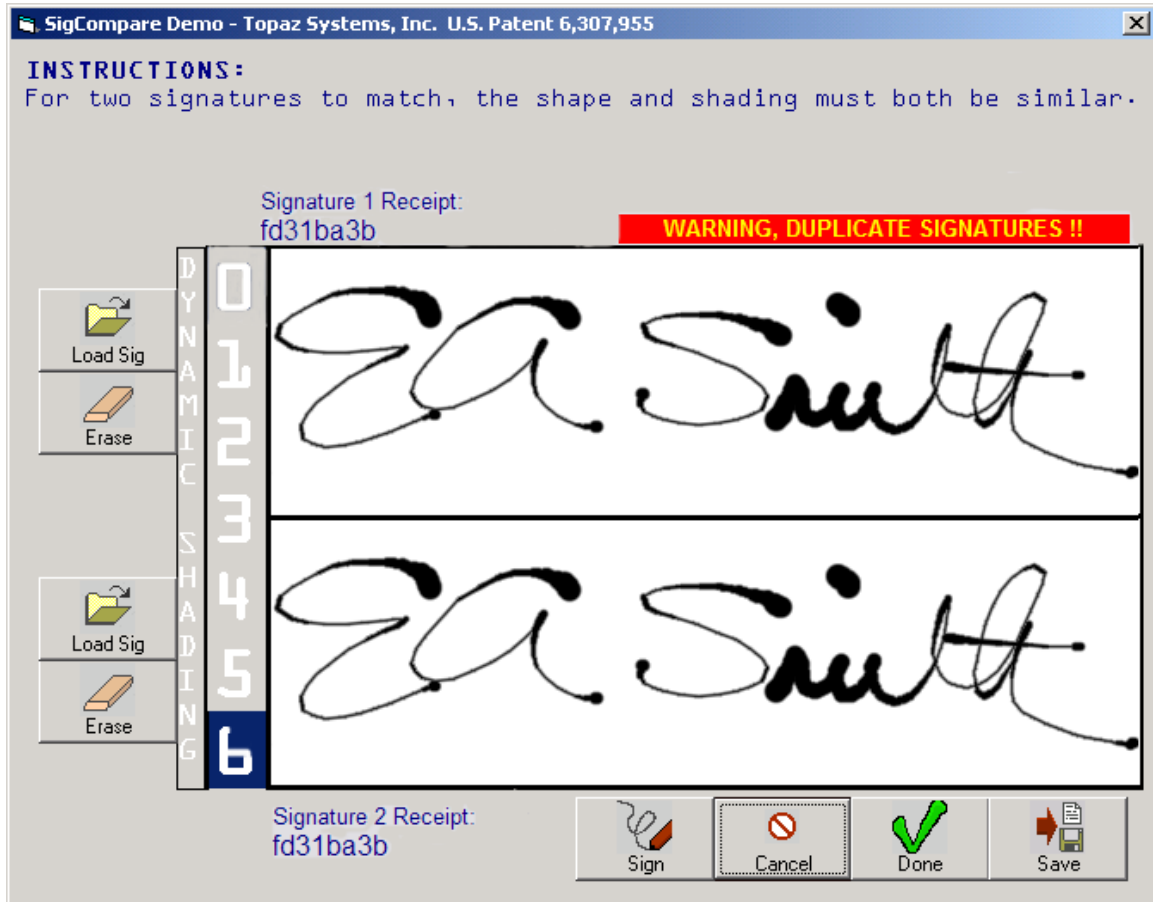
Notice the distinct differences in the dynamic shading. The upper reference signature is used to compare the authenticity of the lower questioned signature. The lower signature is very likely to be false, because while similar in shape, it exhibits the “slow signing effect” typical of the actions of a forger.

In contrast to drastic differences in dynamic shading in signatures another sure way to see if a signature is a forgery is if the signatures are exact.

Topaz Systems, Inc.
SigCompare How To

Topaz Systems, Inc.
650 Cochran Street, Unit 6
Simi Valley, CA, 93065
©1995-2005, all rights reserved, US patent 6,307,955, and pending

www.topazsystems.com
tech support: 805 520-8286
support@topazsystems.com



The upper reference signature is used to compare the authenticity of the lower questioned signature. The lower signature is a duplicate or copy and therefore is clearly not representative of a unique act-of-signing event. This copy is detected by comparing signature receipts.

Signature receipts are an 8 digit hash of the signature which is used for easy comparison. No signature receipt will be identical unless the signature itself is an identical copy, and thus, an obvious forgery.

Additionally, after the user has signed the administrator can choose to save the new signature by clicking on the 'Save' button. This will make no new changes to the currently loaded .SIG file, but depending on the application could be a useful tool for quality control, verification, or authentication at a later date.