

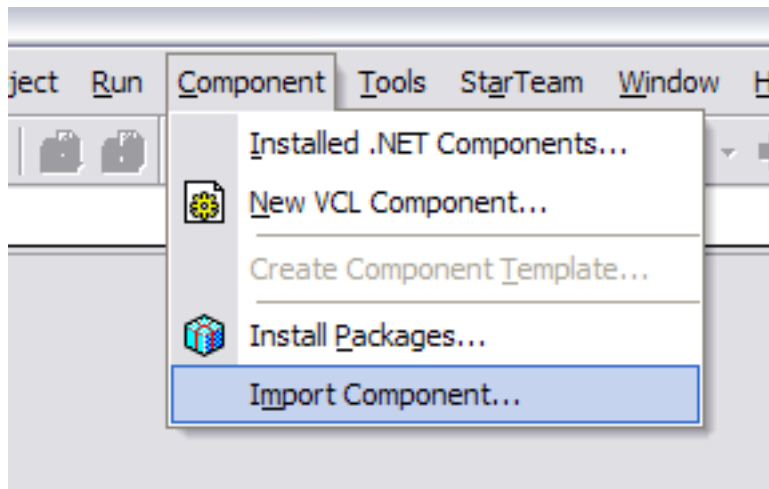
Topaz Systems, Inc.
Delphi and SigPlus HowTo

Topaz Systems, Inc.
650 Cochran Street, Unit 6
Simi Valley, CA, 93065
©1995-2005, all rights reserved, US patent 6,307,955, and pending

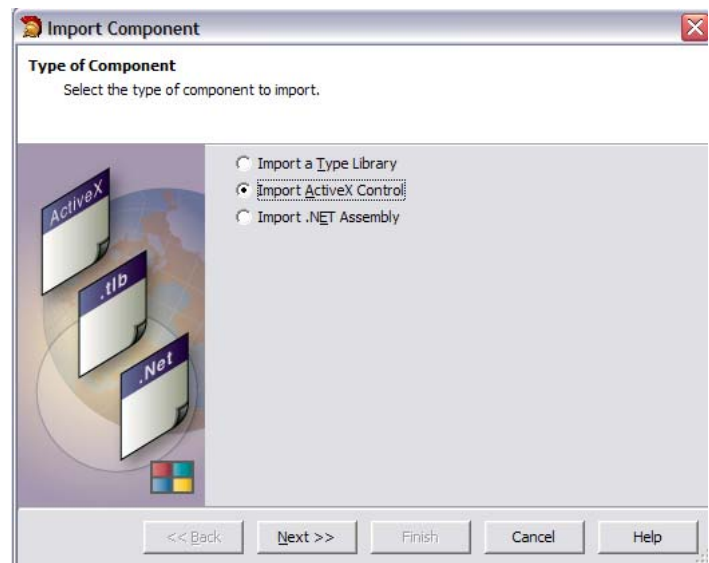
www.topazsystems.com
tech support: 805 520-8286
support@topazsystems.com

In order to allow flexibility and customization of applications, Topaz Systems has built the SigPlus ActiveX control to be used in a number of development environments. This document is meant to give the Borland Delphi developer the basics in adding the SigPlus ActiveX component into a Delphi form. To start, make sure that the newest version of SigPlus has already been installed on your computer. SigPlus can be downloaded here: <http://www.topazsystems.com/Software/sigplus.exe>

Once SigPlus has been installed, start by importing the SigPlus Module. To do this, go to Components...Import Component.



This will open a window that will give the developer the option of importing a Type Library, an Active X control, or a .NET Assembly. Choose the Active X control and click 'Next'.

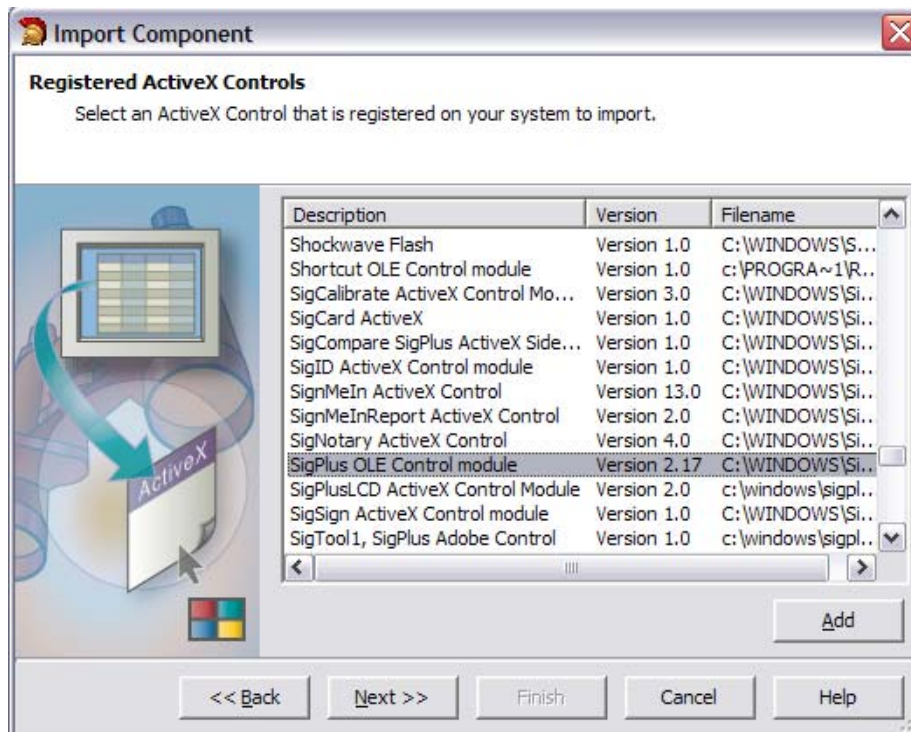


Topaz Systems, Inc.
Delphi and SigPlus HowTo

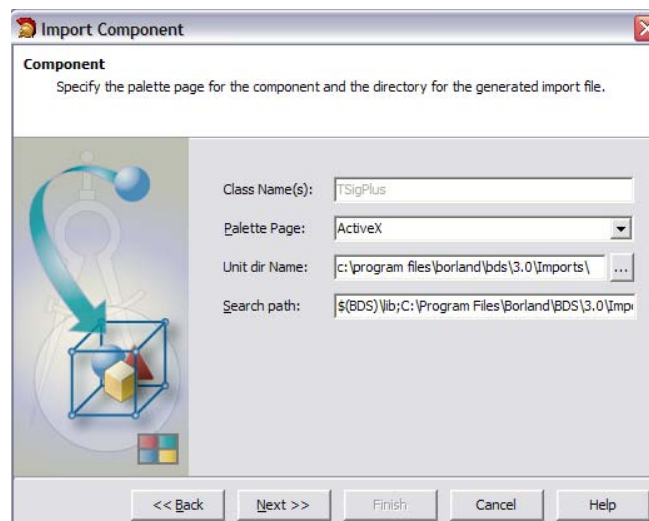
Topaz Systems, Inc.
650 Cochran Street, Unit 6
Simi Valley, CA, 93065
©1995-2005, all rights reserved, US patent 6,307,955, and pending

www.topazsystems.com
tech support: 805 520-8286
support@topazsystems.com

The next window will give the developer the opportunity to choose which control to import. Choose the SigPlus OLE Control module and click 'Next'.



The next window will ask the user to specify the palette page for the component and the directory for the generated import file. Typically, the default settings are acceptable. Click Next.

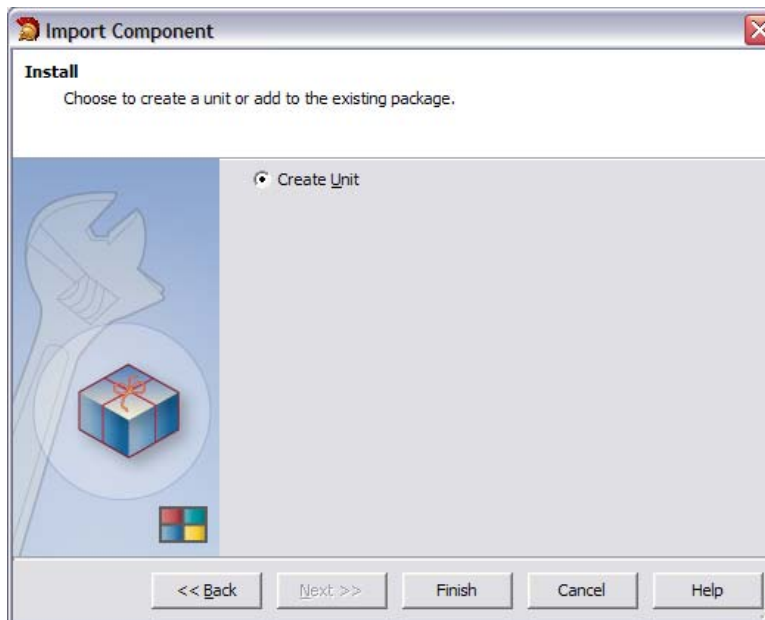


Topaz Systems, Inc.
Delphi and SigPlus HowTo

Topaz Systems, Inc.
650 Cochran Street, Unit 6
Simi Valley, CA, 93065
©1995-2005, all rights reserved, US patent 6,307,955, and pending

www.topazsystems.com
tech support: 805 520-8286
support@topazsystems.com

After the palette page has been specified, click finish to create the Unit and import the component.



Once the unit is created and the component imported, the code will appear under the 'SIGPLUSLib_TLB' tab.

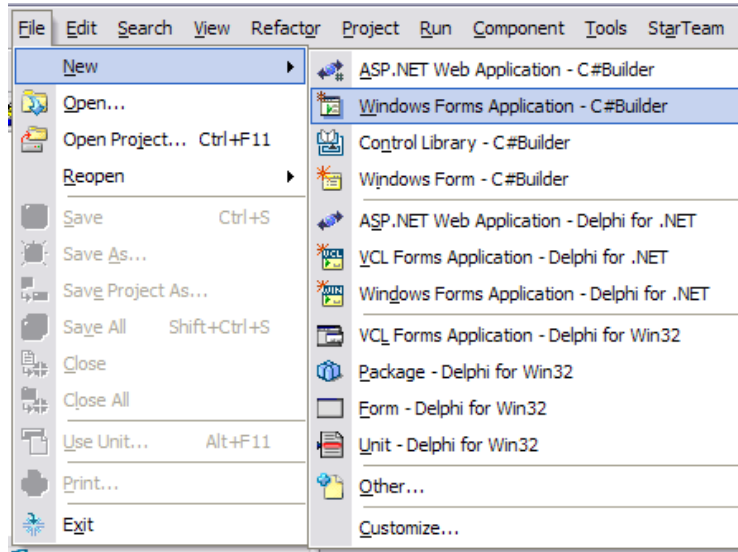
```
SIGPLUSLib_TLB
1 unit SIGPLUSLib_TLB;
2
3 // *****
4 // WARNING
5 // -----
6 // The types declared in this file were generated from data read
7 // Type Library. If this type library is explicitly or indirectly
8 // another type library referring to this type library) re-import
9 // 'Refresh' command of the Type Library Editor activated while a
10 // Type Library, the contents of this file will be regenerated and
11 // manual modifications will be lost.
12 // *****
13
14 // PASTLWTR : 1.2
15 // File generated on 4/7/2005 10:16:00 AM from Type Library desc
16
17 // *****
18 // Type Lib: C:\WINDOWS\SigPlus\SigPlus.ocx (1)
19 // LIBID: {69A40DA0-4D42-11D0-86B0-0000C02864A}
20 // LCID: 0
21 // Helpfile:
22 // HelpString: SigPlus OLE Control module
23 // DepndLst:
24 // (1) v2.0 stdole, (C:\WINDOWS\System32\stdole2.tlb)
25 // *****
26 //
27 // NOTE:
28 // Items guarded by $IFDEF LIVE_SERVER_AT_DESIGN_TIME are used by
29 // which return objects that may need to be explicitly created via
30 // call prior to any access via the property. These items have be
31 // in order to prevent accidental use from within the object insp
32 // may enable them by defining LIVE_SERVER_AT_DESIGN_TIME or by s
33 // removing them from the $IFDEF blocks. However, such items must
34 // programmatically created via a method of the appropriate CoClea
35 // they can be used.
36 {$IFDEFADDRESS OFF} // Unit must be compiled without type-checked
```

Topaz Systems, Inc.
Delphi and SigPlus HowTo

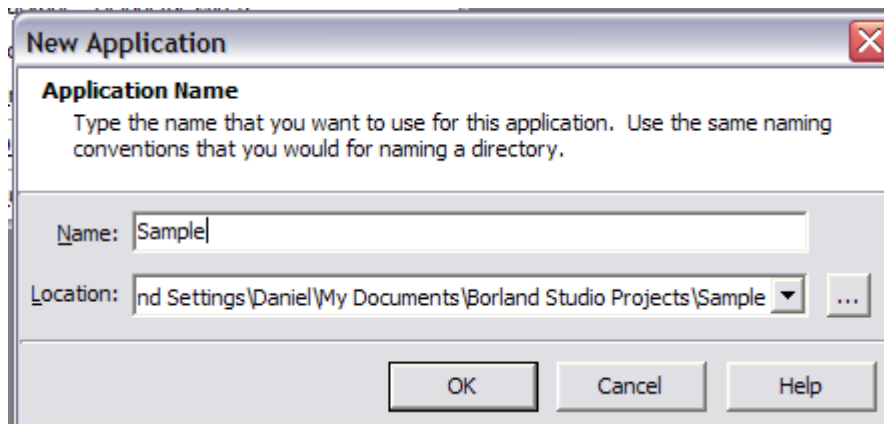
Topaz Systems, Inc.
650 Cochran Street, Unit 6
Simi Valley, CA, 93065
©1995-2005, all rights reserved, US patent 6,307,955, and pending

www.topazsystems.com
tech support: 805 520-8286
support@topazsystems.com

Once the Active X control has been imported, you can create a new project of choice. For example, you might choose a new Windows form project: go to File...New...Windows Form Application- C# Builder.



This will then bring up a window to name the Form Application, pick any name and press 'OK'. If desired the developer can choose a different location to save the Application in.

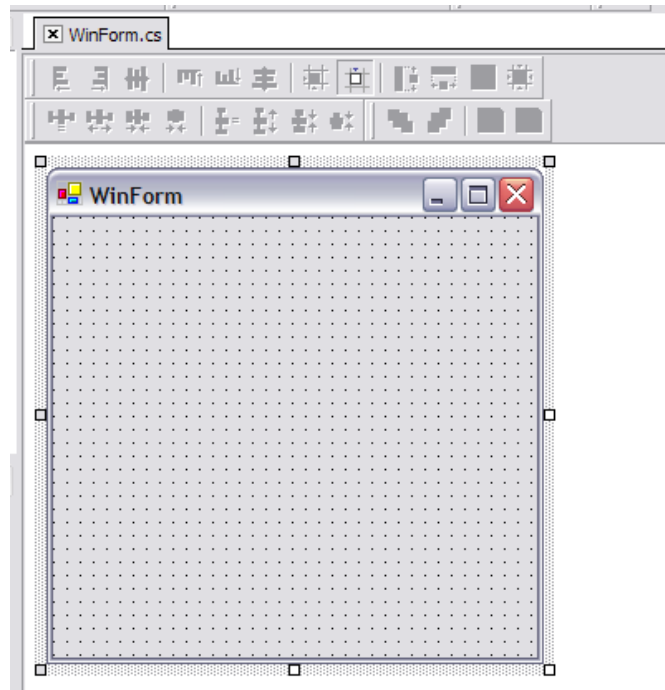


Topaz Systems, Inc.
Delphi and SigPlus HowTo

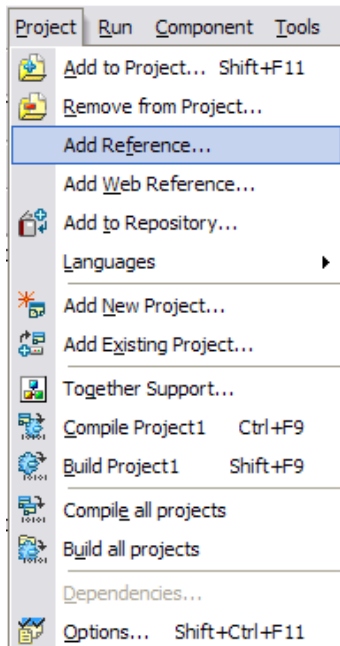
Topaz Systems, Inc.
650 Cochran Street, Unit 6
Simi Valley, CA, 93065
©1995-2005, all rights reserved, US patent 6,307,955, and pending

www.topazsystems.com
tech support: 805 520-8286
support@topazsystems.com

After the Application is named, the Form will appear.



Next, the developer will need to add a reference to SigPlus. To accomplish this, go to Project...Add Reference.

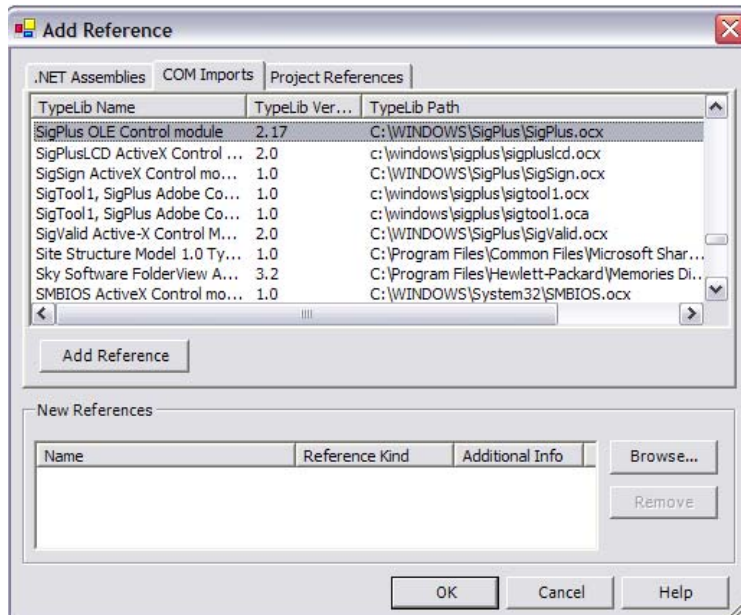


Topaz Systems, Inc.
Delphi and SigPlus HowTo

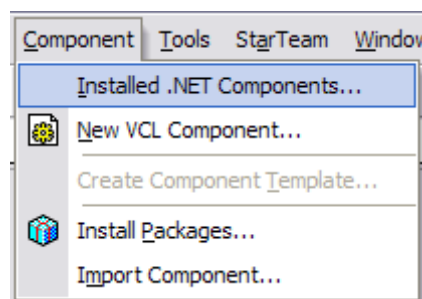
Topaz Systems, Inc.
650 Cochran Street, Unit 6
Simi Valley, CA, 93065
©1995-2005, all rights reserved, US patent 6,307,955, and pending

www.topazsystems.com
tech support: 805 520-8286
support@topazsystems.com

This will bring up the 'Add Reference' window. Under the 'COM Imports' tab select the 'SigPlus OLE Control module' that resides in C:\WIN(Windows or WINNT)\SigPlus\SigPlus.ocx.



Once the form is complete and the reference is added the developer will need to make sure the SigPlus Control is added to the toolbox. To do this, go to Components...Installed .NET Components.

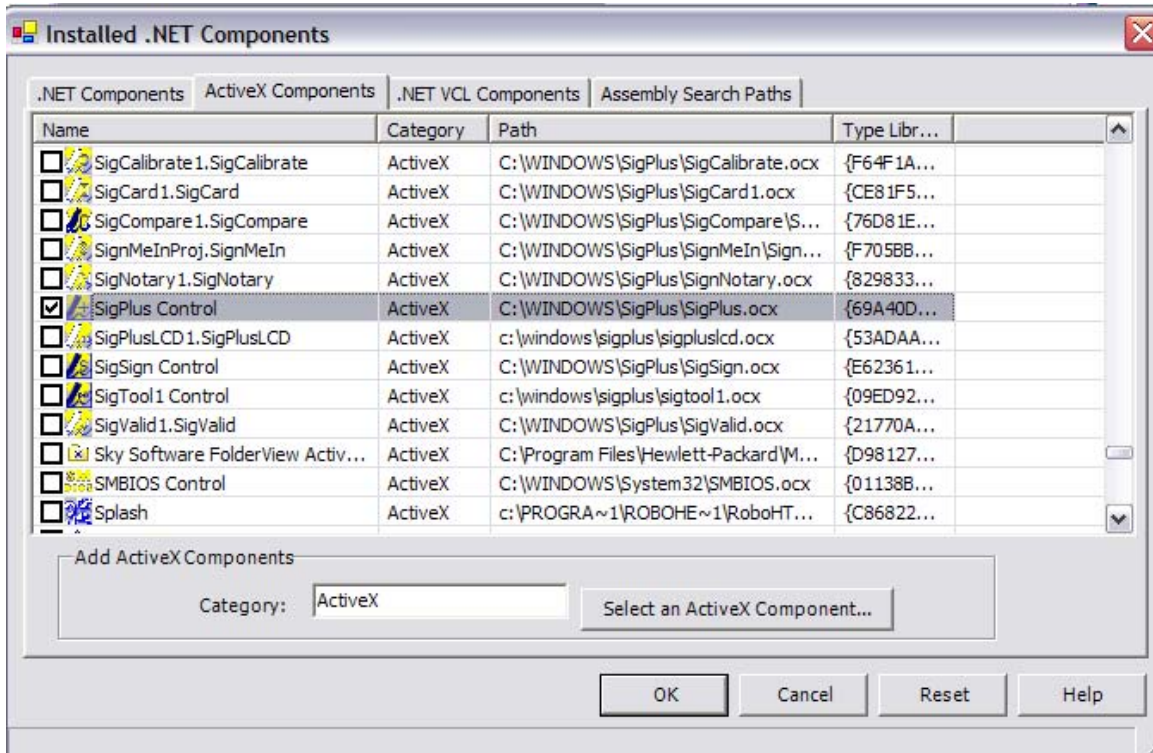


This will open a window where you can choose what component to add. Under the ActiveX Components tab make sure the SigPlus Control is checked.

Topaz Systems, Inc.
Delphi and SigPlus HowTo

Topaz Systems, Inc.
650 Cochran Street, Unit 6
Simi Valley, CA, 93065
©1995-2005, all rights reserved, US patent 6,307,955, and pending

www.topazsystems.com
tech support: 805 520-8286
support@topazsystems.com



This will then add the SigPlus control to the toolbox. To use this simply click on it and then drag the SigPlus box into the Windows Form. Now the SigPlus control has been added to the application and development can continue.

