



Topaz Systems, Inc. SignMeUpLCD1X5_2000.mdb Guide

Topaz Systems, Inc.
650 Cochran Street, Unit 6
Simi Valley, CA, 93065
©1995-2006, all rights reserved, US patent 6,307,955, and pending

www.topazsystems.com
tech support: 805 520-8286
support@topazsystems.com

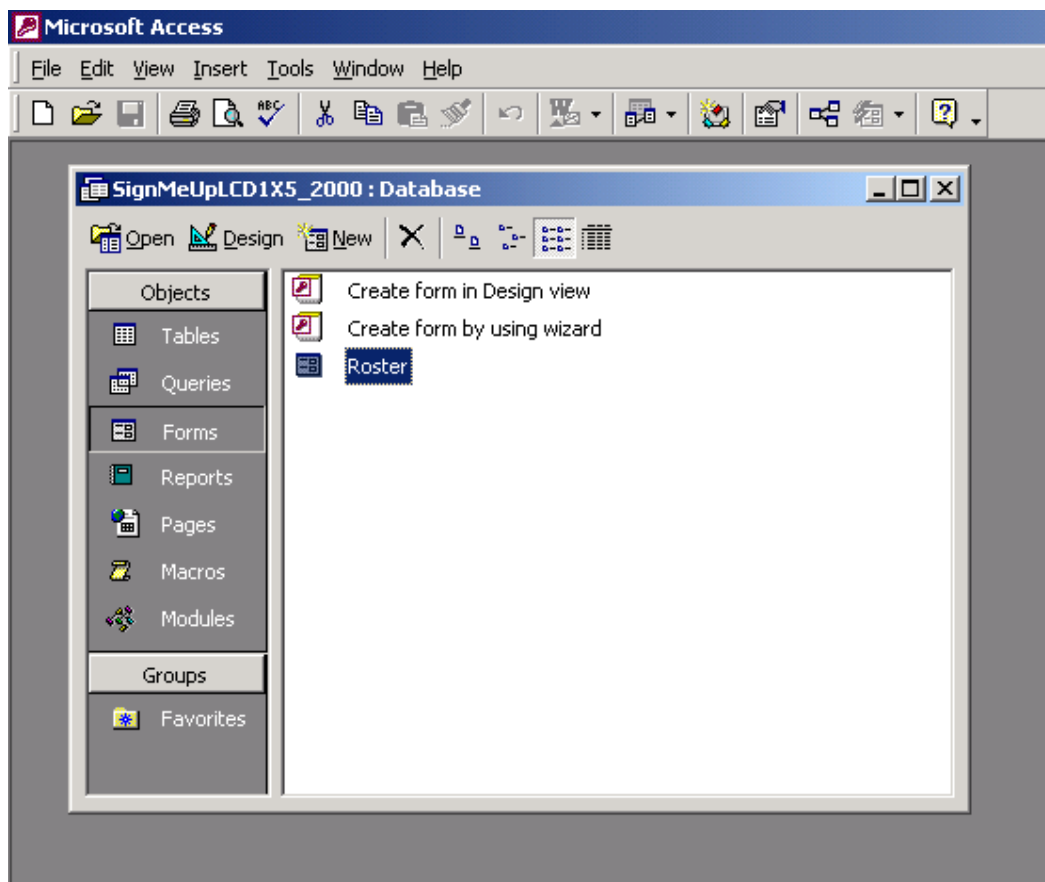
Welcome to the “SignMeUpLCD1X5_2000.mdb” Guide. This will walk you through our demo “SignMeUpLCD1X5_2000.mdb”, available from our website.

To download go to:

<http://www.topazsystems.com/software/>

This demo shows the developer how to create an application that communicates information to the LCD 1x5. Begin by opening “SignMeUpLCD1X5_2000.mdb”.

The window below will appear on your monitor. Click on “Forms” in the object menu, and then “Roster” as shown below.



The roster below will be displayed on the screen. Click "Begin LCD App" to sign.

ID Number	Date of Service	Social Security Number
307	11/5/2000	123456789

Last	First	Initial
Smith	E	A

Date of Birth	Sex M/F
1/1/1953	M

Address
12345 houser

City	State	Zip
New York	NY	83101

EAS

Sign

Back Next Add Delete Save Close

Begin LCD App

Record: 1 of 10

Sign on the dotted line on your tablet (shown below).



Press “Ok” after you are done signing. Your tablet will now display the options “Back” and “Exit.” Click “Exit” to conclude signing, or “Back” to go back to the previous screen.



The Code

Below is the code that is run when you click on “Begin LCD App.” The code is fairly well marked, please refer to markers to see functionality.

```
Private Sub cmdBeginLCD_Click()  
SigPlus2.LCDSetTabletMap 0, 240, 64, 100, 0, 1900, 700 'Sets Map up for LCD 1X5 tablet  
  
'*****'  
' The following parameters are set in case the user's INI file is not correctly set up for an LCD  
1X5 tablet  
' Otherwise, if the INI is correctly set up, these parameters do not need to be set  
SigPlus2.TabletXStart = 400  
SigPlus2.TabletXStop = 2400  
SigPlus2.TabletYStart = 350  
SigPlus2.TabletYStop = 1050  
SigPlus2.TabletLogicalXSize = 2000  
SigPlus2.TabletLogicalYSize = 700  
'*****'  
  
SigPlus2.LCDRefresh 0, 0, 0, 240, 64  
  
SigPlus2.LCDCaptureMode = 2 'Sets mode so ink will not disappear after a few seconds  
  
'The following code will write BMP images out to the LCD 1X5 screen  
SigPlus2.LCDWriteFile 1, 2, 0, 0, 240, 53, 0, "c:\ThankYou.bmp" 'This image is  
'written out to the background  
  
'These two BMPs are written out to the foreground  
SigPlus2.LCDWriteFile 0, 2, 0, 20, 240, 44, 0, "c:\Sign.bmp"  
SigPlus2.LCDWriteFile 0, 2, 207, 4, 21, 11, 0, "c:\OK.bmp"  
SigPlus2.LCDWriteFile 0, 2, 15, 4, 37, 11, 0, "c:\CLEAR.bmp"  
  
'Create the hot spot for the OK BMP  
SigPlus2.KeyPadAddHotSpot 0, 1, 197, 5, 19, 17 'For OK button  
SigPlus2.KeyPadAddHotSpot 1, 1, 10, 5, 53, 17 'For CLEAR button
```

SigPlus2.ClearTablet

'The following sets the LCD's signature window up to display ink only in the
'certain spot on the LCD specified--in this case, the Signature BMP area

SigPlus2.LCDSetWindow 0, 22, 240, 40

SigPlus2.SetSigWindow 1, 0, 22, 240, 40 'Sets the area where ink is permitted in the SigPlus
object

SigPlus2.TabletState = 1 'Turns tablet on to collect signature

SigPlus2.SetEventEnableMask (1)

End Sub

This is the pen down event, fired when the pen hits the pad. The pen down event is used to check the hotspots and whether the user has tapped one or not. Below each hotspot represents a possible button that the user tapped on. Hotspot(0) = ok, Hotspot(1) = clear, Hotspot(2) = back, and Hotspot(3) = exit is used to display the signature in the database.

Private Sub SigPlus2_PenDown()

If SigPlus2.KeyPadQueryHotSpot(0) > 0 Then 'if the OK hotspot is tapped, then...

SigPlus2.LCDRefresh 1, 210, 3, 14, 14 'Refresh LCD at 'OK' to indicate to user that this
option has been successfully chosen

If SigPlus2.NumberOfTabletPoints > 0 Then

SigPlus2.JustifyMode = 5

'strSignature = SigPlus1.SigString

'this is where you grab the signature!!

'SigPlus2.SigCompressionMode = 1

LCDSignature.Value = SigPlus2.SigString

SigPlus2.LCDSetWindow 0, 0, 0, 0

SigPlus2.LCDRefresh 0, 0, 0, 240, 64

SigPlus2.LCDRefresh 2, 0, 0, 240, 52 'Brings the background image already loaded into
foreground

SigPlus2.ClearTablet

SigPlus2.ClearSigWindow 1

SigPlus2.KeyPadClearHotSpotList

SigPlus2.KeyPadAddHotSpot 2, 1, 29, 38, 44, 19 'For BACK button

SigPlus2.KeyPadAddHotSpot 3, 1, 172, 37, 40, 19 'For EXIT button

Else

SigPlus2.LCDRefresh 0, 0, 0, 240, 64

SigPlus2.LCDWriteFile 0, 2, 4, 20, 234, 20, 0, "c:\please.bmp"

Sleep 750

SigPlus2.ClearTablet

SigPlus2.LCDWriteFile 0, 2, 0, 20, 240, 44, 0, "c:\Sign.bmp"

SigPlus2.LCDWriteFile 0, 2, 207, 4, 21, 11, 0, "c:\OK.bmp"

SigPlus2.LCDWriteFile 0, 2, 15, 4, 37, 11, 0, "c:\CLEAR.bmp"

End If

End If

If SigPlus2.KeyPadQueryHotSpot(1) > 0 Then 'if the CLEAR hotspot is tapped, then...

SigPlus2.LCDRefresh 1, 10, 0, 53, 17 'Refresh LCD at 'CLEAR' to indicate to user that this
option has been successfully chosen

SigPlus2.LCDRefresh 0, 0, 18, 240, 50 'Clear out both signature and signature box

SigPlus2.LCDWriteFile 0, 2, 0, 20, 240, 44, 0, "c:\Sign.bmp"

SigPlus2.LCDRefresh 1, 10, 0, 53, 17 'Refresh LCD at 'CLEAR' to return CLEAR button to
normal

SigPlus2.ClearTablet

End If

If SigPlus2.KeyPadQueryHotSpot(2) > 0 Then 'if the BACK hotspot is tapped, then...

SigPlus2.LCDRefresh 1, 29, 38, 44, 19 'Refresh (invert) LCD at 'BACK' to indicate to user
that this option has been successfully chosen

```

SigPlus2.LCDRefresh 0, 0, 0, 240, 64
SigPlus2.ClearTablet
SigPlus2.ClearSigWindow 1
SigPlus2.LCDSetWindow 0, 22, 240, 40
SigPlus2.LCDWriteFile 0, 2, 0, 20, 240, 44, 0, "c:\Sign.bmp"
SigPlus2.LCDWriteFile 0, 2, 207, 4, 21, 11, 0, "c:\OK.bmp"
SigPlus2.LCDWriteFile 0, 2, 15, 4, 37, 11, 0, "c:\CLEAR.bmp"
SigPlus2.ClearTablet
SigPlus2.KeyPadClearHotSpotList
SigPlus2.KeyPadAddHotSpot 0, 1, 197, 5, 19, 17 'For OK button
SigPlus2.KeyPadAddHotSpot 1, 1, 10, 5, 53, 17 'For CLEAR button
End If
If SigPlus2.KeyPadQueryHotSpot(3) > 0 Then 'if the EXIT hotspot is tapped, then...
    SigPlus2.LCDRefresh 1, 182, 37, 30, 19 'Refresh (invert) LCD at 'OK' to indicate to user
    that this option has been sucessfully chosen
    SigPlus2.LCDCaptureMode = 1
    SigPlus2.LCDRefresh 0, 0, 0, 240, 64
    SigPlus2.TabletState = 0
    SigPlus2.LCDSetWindow 0, 0, 240, 64
    SigPlus2.SetSigWindow 1, 0, 0, 240, 64
    SigPlus2.SigCompressionMode = 1
    If Len(LCDSignature.Value) > 0 Then
        SigPlus2.SigString = LCDSignature.Value
    End If
    SigPlus2.KeyPadClearHotSpotList
    End
End If
SigPlus2.SetEventEnableMask (1)

End Sub

```

For more information on all other functionality please see our Access How to available at:
www.topazsystems.com/Software/download/accessdemohowto.pdf

For more information regarding products and support, please visit the Topaz web site at
<http://www.topazsystems.com>