

<http://www.topazsystems.com>

Topaz Systems, Inc.

Sig Calibrate How To

Topaz Systems, Inc.

650 Cochran Street, Unit 6

Simi Valley, CA, 93065

©1995-2005, all rights reserved, US patent 6,307,955, and pending

[www.topazsystems.com](http://www.topazsystems.com)

tech support: 805 520-8286

support@topazsystems.com

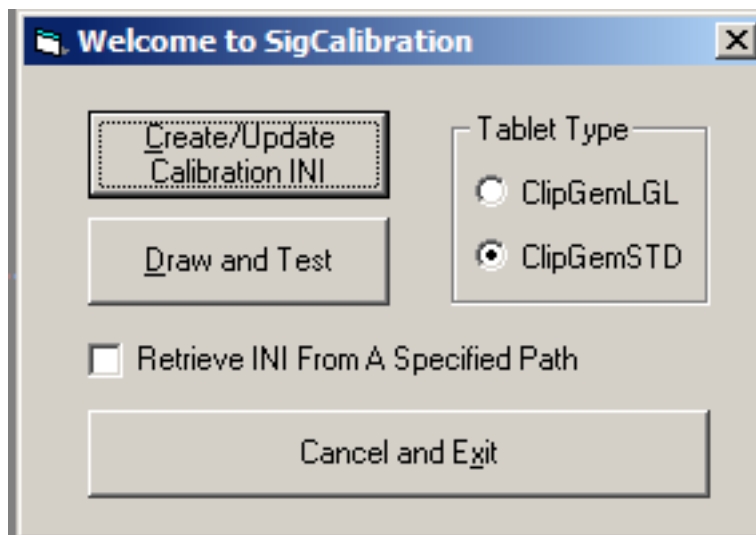
The Topaz SigCalibration system is a demo program for the SigCalibrate ActiveX object, which calibrates the tablet and pen data taken by a Topaz ClipGem or ClipGemLGL tablet, returning extremely accurate pen data point collection. SigCalibration allows the user to create and update the Calibration INI (ClipGemCalibrate.ini file for ClipGemLGL tablets, and ClipGemCalibrate1.ini for standard ClipGem tablets), which holds the calibration data. In addition, the user can browse the Draw page, to test the calibration of each individual tablet, and print the results. SigCalibration is used primarily for two things: a. It creates the INI file used for calibration, and b. it provides a test mechanism to see if the calibration INI is accurate. Of course, real-world use should be dependent upon the real-world application that uses the SigCalibrate ActiveX control

## Using SigCalibrate

Before SigCalibration can be run, the user must first go into SigAdjust and change the SigPlus.INI file to match the tablet (ClipGem or ClipGemLGL) they are using. Until this is completed SigCalibrate cannot recognize the tablets.

Make sure that the calibration sheets, found in WINDOWS/SigPlus/Docs folder after install, have been printed out and placed on the ClipGem tablet. These sheets are the guides throughout the calibration process.

Starting SigCalibration opens the SigCalibration main window.



<http://www.topazsystems.com>

<http://www.topazsystems.com>

Topaz Systems, Inc.

Sig Calibrate How To

Topaz Systems, Inc.

650 Cochran Street, Unit 6

Simi Valley, CA, 93065

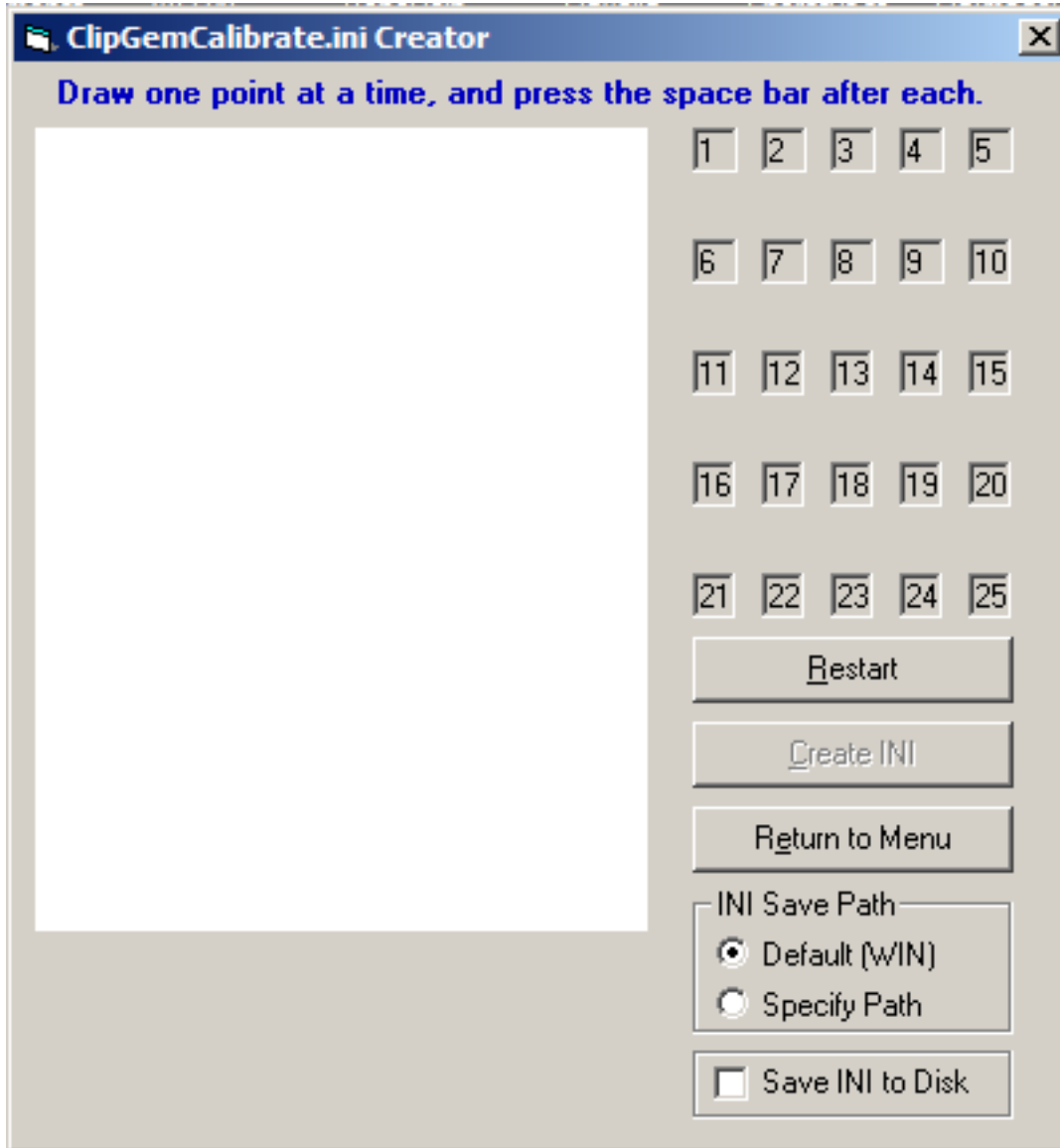
©1995-2005, all rights reserved, US patent 6,307,955, and pending

Once this window is open, start by choosing which tablet is being calibrated in the 'Tablet Type' box. Once that is done, click on the 'Create/Update Calibration.INI' button. This will open 'ClipGemCalibrate.ini Creator' window.

[www.topazsystems.com](http://www.topazsystems.com)

tech support: 805 520-8286

[support@topazsystems.com](mailto:support@topazsystems.com)



Once this window is open the user can begin the process of creating the .INI file. Making sure that the calibration sheet is properly placed on the ClipGem tablet, take the Topaz pen and place the pen on one of the 25 points (where the lines intersect). When performing this function it is important to make sure that the user is holding the pen how they would hold it during signing. With the pen on each point, press the spacebar. When

<http://www.topazsystems.com>

<http://www.topazsystems.com>

Topaz Systems, Inc.

Sig Calibrate How To

Topaz Systems, Inc.

650 Cochran Street, Unit 6

Simi Valley, CA, 93065

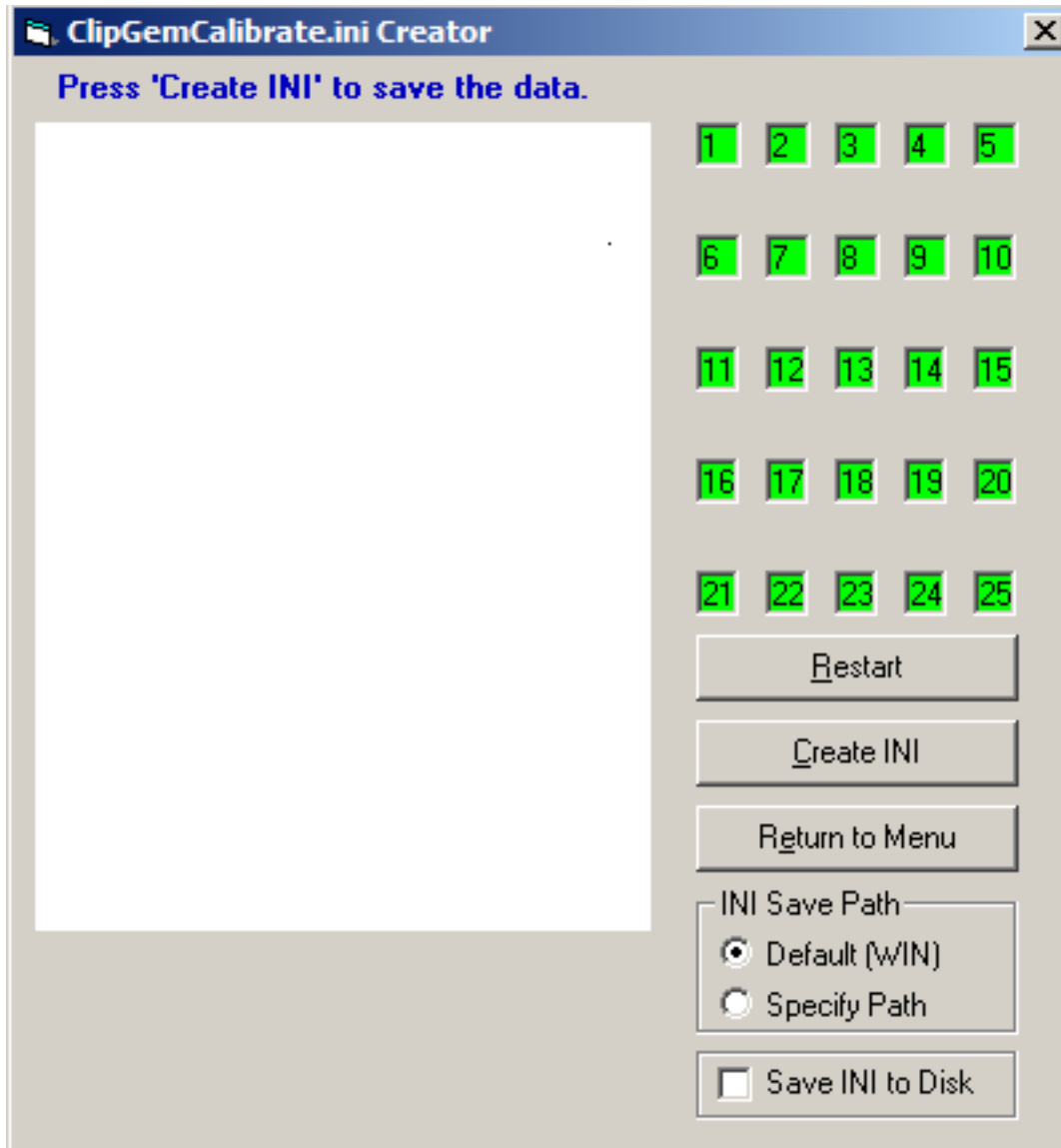
©1995-2005, all rights reserved, US patent 6,307,955, and pending

a point is successfully recorded its corresponding number will turn green, when all the points have been successfully recorded following the same procedure for the first, all the numbers will be green.

[www.topazsystems.com](http://www.topazsystems.com)

tech support: 805 520-8286

[support@topazsystems.com](mailto:support@topazsystems.com)



Once all the points have been successfully recorded, as denoted by the 25 numbers all being highlighted green, then click on the 'Create INI' button to create/update the .INI file. The 'INI Save Path' box denotes where the .INI file will be saved. The default is in the Windows directory, if the user does not want the file saved there they can choose the 'Specify Path' option, or can choose to 'Save INI to Disk'. If either of these is chosen

<http://www.topazsystems.com>

<http://www.topazsystems.com>

Topaz Systems, Inc.

Sig Calibrate How To

Topaz Systems, Inc.

650 Cochran Street, Unit 6

Simi Valley, CA, 93065

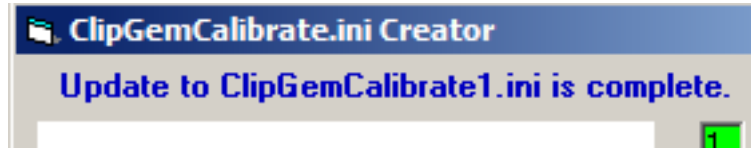
©1995-2005, all rights reserved, US patent 6,307,955, and pending

when the 'Create INI' button is pressed, a window will be opened to specify where the field is to be saved. Once the .INI file is successfully saved, a message will appear at the top of the INI generator window.

[www.topazsystems.com](http://www.topazsystems.com)

tech support: 805 520-8286

[support@topazsystems.com](mailto:support@topazsystems.com)



#### WHERE CALIBRATION INI IS SAVED

The ClipGemCalibrate.ini and ClipGemCalibrate1.ini files are both saved by default in the WIN directory of your computer. You may also choose a different path to the INI file(s) by checking the option to 'Specify the INI Path' on the CREATE/UPDATE INI form. You can create your first ClipGemCalibrate.ini or ClipGemCalibrate1.ini file, you may use the SigCalibration.exe program.

At any time during this process clicking 'Restart' will clear the points recorded, and 'Return to Menu' will return the user to the SigCalibrate Main Page. Once all the points have been recorded, return to the main menu. Once their click on the 'Draw and Test' button, this will open the Test window.

<http://www.topazsystems.com>

<http://www.topazsystems.com>

Topaz Systems, Inc.

Sig Calibrate How To

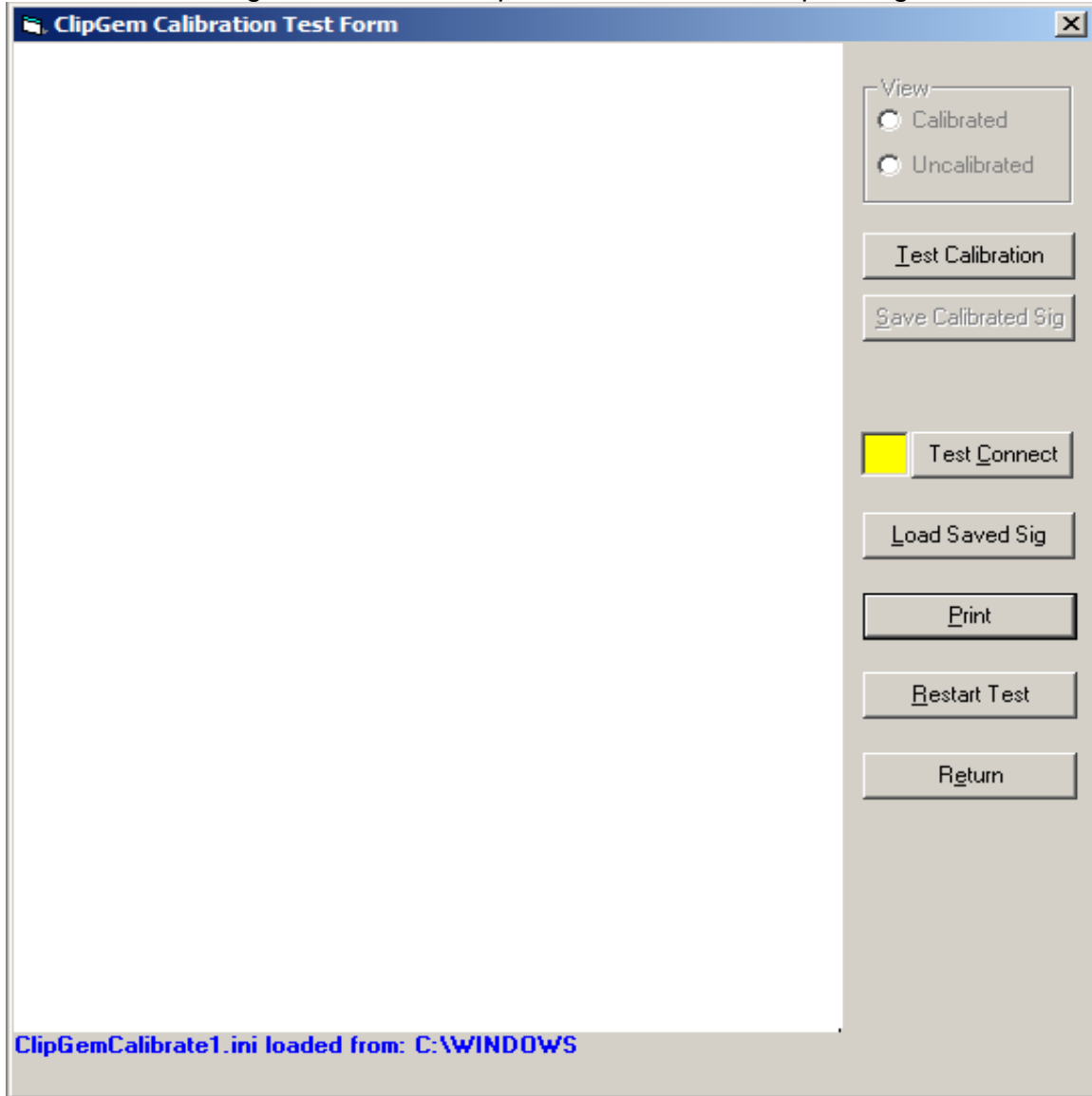
Topaz Systems, Inc.  
650 Cochran Street, Unit 6  
Simi Valley, CA, 93065

[www.topazsystems.com](http://www.topazsystems.com)

tech support: 805 520-8286

[support@topazsystems.com](mailto:support@topazsystems.com)

©1995-2005, all rights reserved, US patent 6,307,955, and pending



Once this window is open, the user can test the calibration of their tablet. To do this again, use the calibration sheet and mark each of the points.

<http://www.topazsystems.com>

<http://www.topazsystems.com>

Topaz Systems, Inc.

Sig Calibrate How To

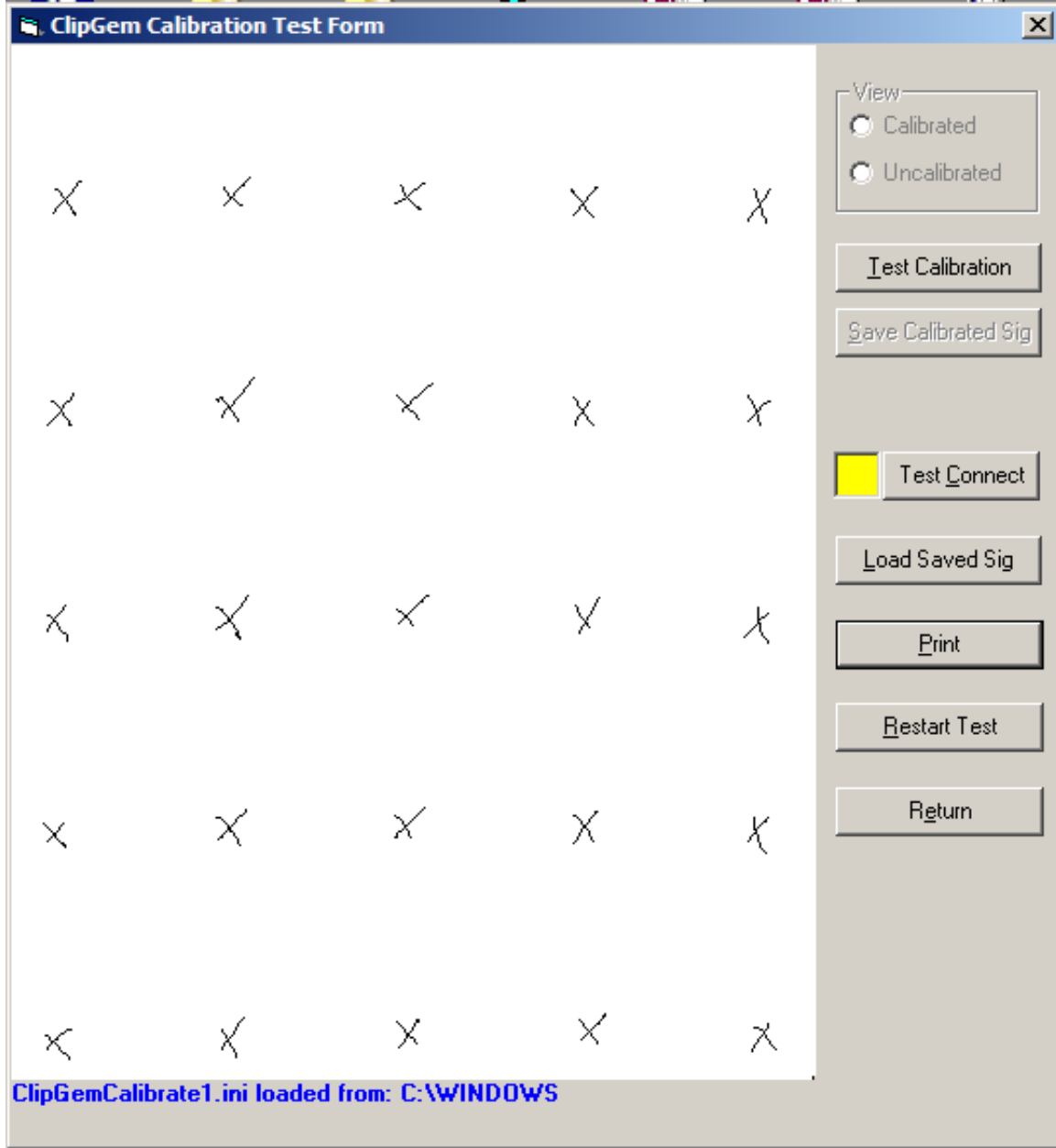
Topaz Systems, Inc.  
650 Cochran Street, Unit 6  
Simi Valley, CA, 93065

[www.topazsystems.com](http://www.topazsystems.com)

tech support: 805 520-8286

[support@topazsystems.com](mailto:support@topazsystems.com)

©1995-2005, all rights reserved, US patent 6,307,955, and pending



Once all the points have been marked, click the 'Test Calibration' button. This will bring up a digital version of the calibration sheet based on the points recorded during the creation of the .INI file.

<http://www.topazsystems.com>

<http://www.topazsystems.com>

Topaz Systems, Inc.

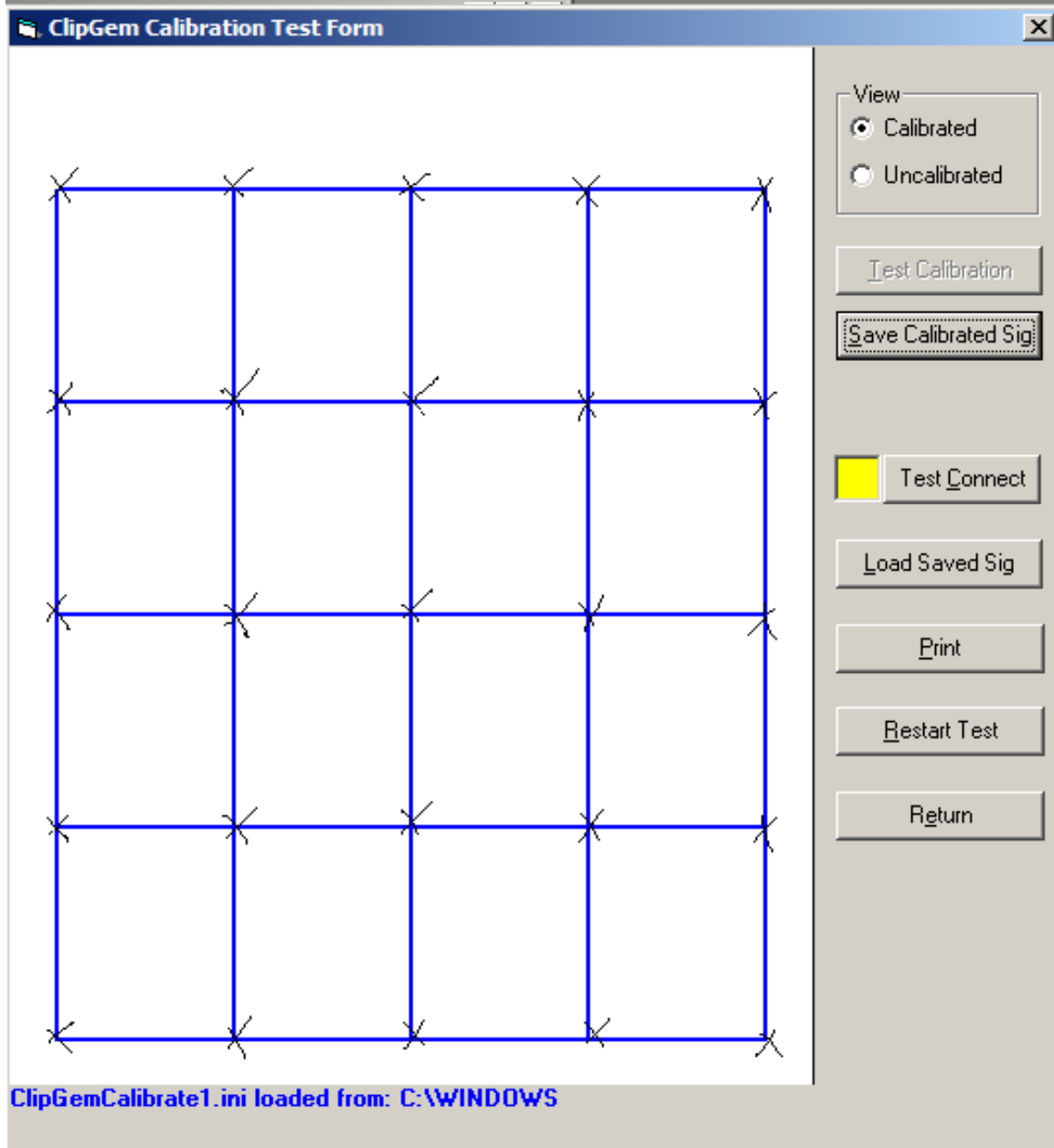
Sig Calibrate How To

Topaz Systems, Inc.  
650 Cochran Street, Unit 6  
Simi Valley, CA, 93065  
©1995-2005, all rights reserved, US patent 6,307,955, and pending

[www.topazsystems.com](http://www.topazsystems.com)

tech support: 805 520-8286

support@topazsystems.com



If all of the marks match up to the points, then the tablet has been successfully calibrated. At this point the user can print the results simply by clicking on the 'Print' button, or restart the test by clicking on the 'Restart Test' button. If the user desires they can save the test as a .SIG file by clicking on the 'Save Calibrated Sig' button. When this occurs a 'Save As' window will open.

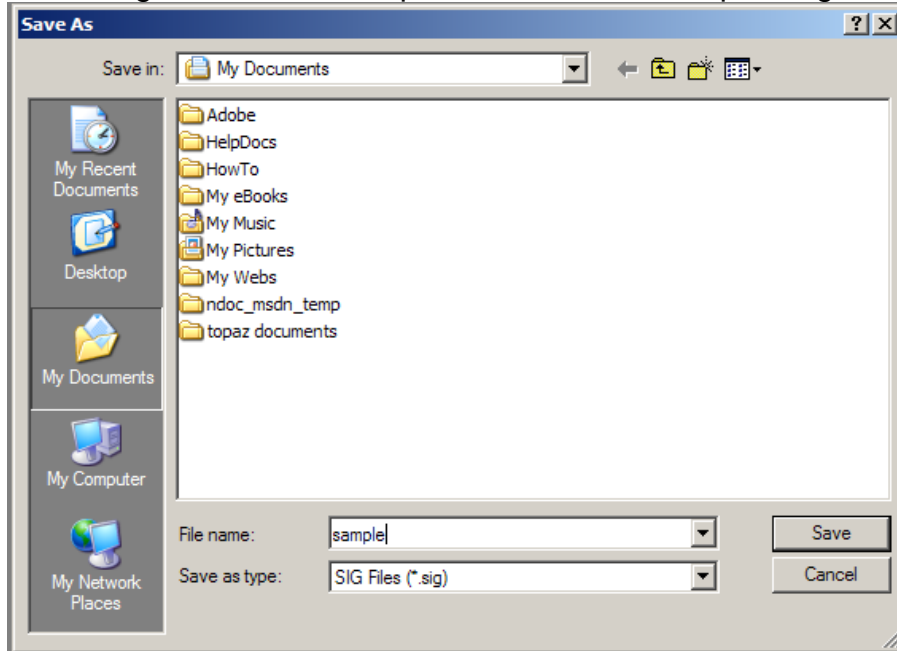
<http://www.topazsystems.com>

<http://www.topazsystems.com>

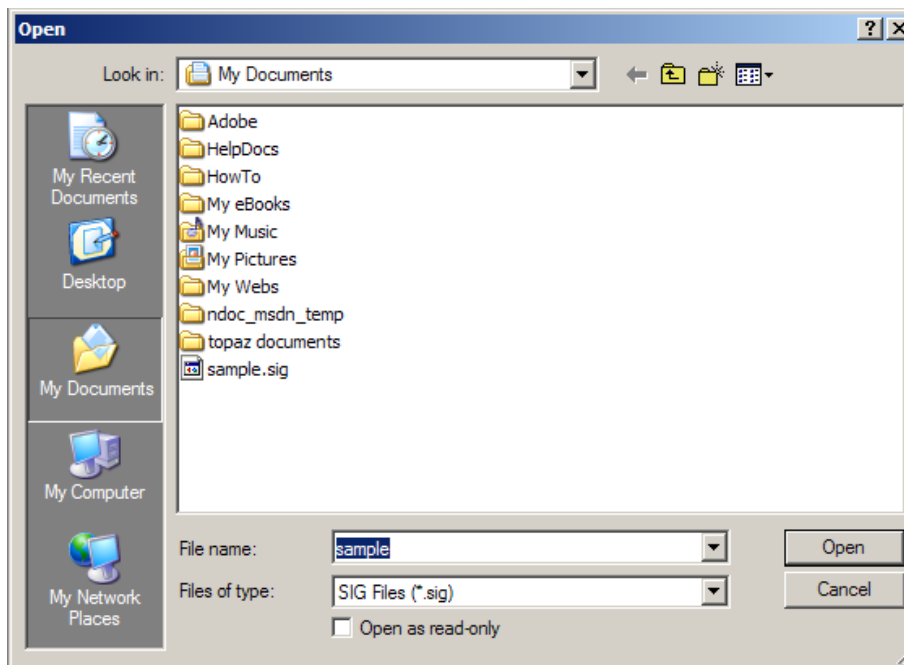
Topaz Systems, Inc.  
Sig Calibrate How To

Topaz Systems, Inc.  
650 Cochran Street, Unit 6  
Simi Valley, CA, 93065  
©1995-2005, all rights reserved, US patent 6,307,955, and pending

[www.topazsystems.com](http://www.topazsystems.com)  
tech support: 805 520-8286  
support@topazsystems.com



Simply choose the name of the file (in this case sample) and click 'Save'. Later, to load the calibrated .SIG file simply click on the 'Load Saved Sig' button. This will bring up an 'Open' window.



<http://www.topazsystems.com>

<http://www.topazsystems.com>

Topaz Systems, Inc.

Sig Calibrate How To

Topaz Systems, Inc.

650 Cochran Street, Unit 6

Simi Valley, CA, 93065

©1995-2005, all rights reserved, US patent 6,307,955, and pending

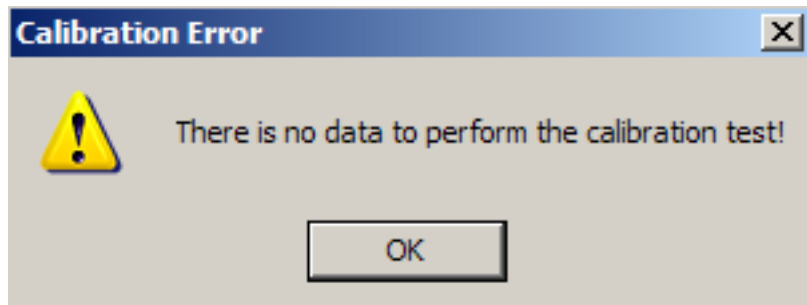
[www.topazsystems.com](http://www.topazsystems.com)

tech support: 805 520-8286

[support@topazsystems.com](mailto:support@topazsystems.com)

Choose the .SIG file you wish to open and click 'Open' and it will then appear in the Test Form window.

If the user attempts to test calibration before any marks are made on in the Test window, then an error message will be generated.



There is also a connection test function. Simply click the 'Test Connect' button, if the tablet is connected and functioning the box will turn from yellow to green, if the tablet is not connected then the box will turn red.



On screen, the user can toggle the 'CALIBRATED' and 'UNCALIBRATED' options, which toggles between a view of the calibrated drawing, and the uncalibrated drawing, which is the information from the tablet without correction from SigCalibrate.

If the .INI file has been saved to a different path than the default, then when running SigCalibrate, this needs to be denoted in the Main Page by checking the 'Retrieve INI From A Specified Path' box. When the user then goes to Create/Update the .INI file or Test/Draw they will then be prompted to specify the path to the .INI file.

<http://www.topazsystems.com>

<http://www.topazsystems.com>

Topaz Systems, Inc.

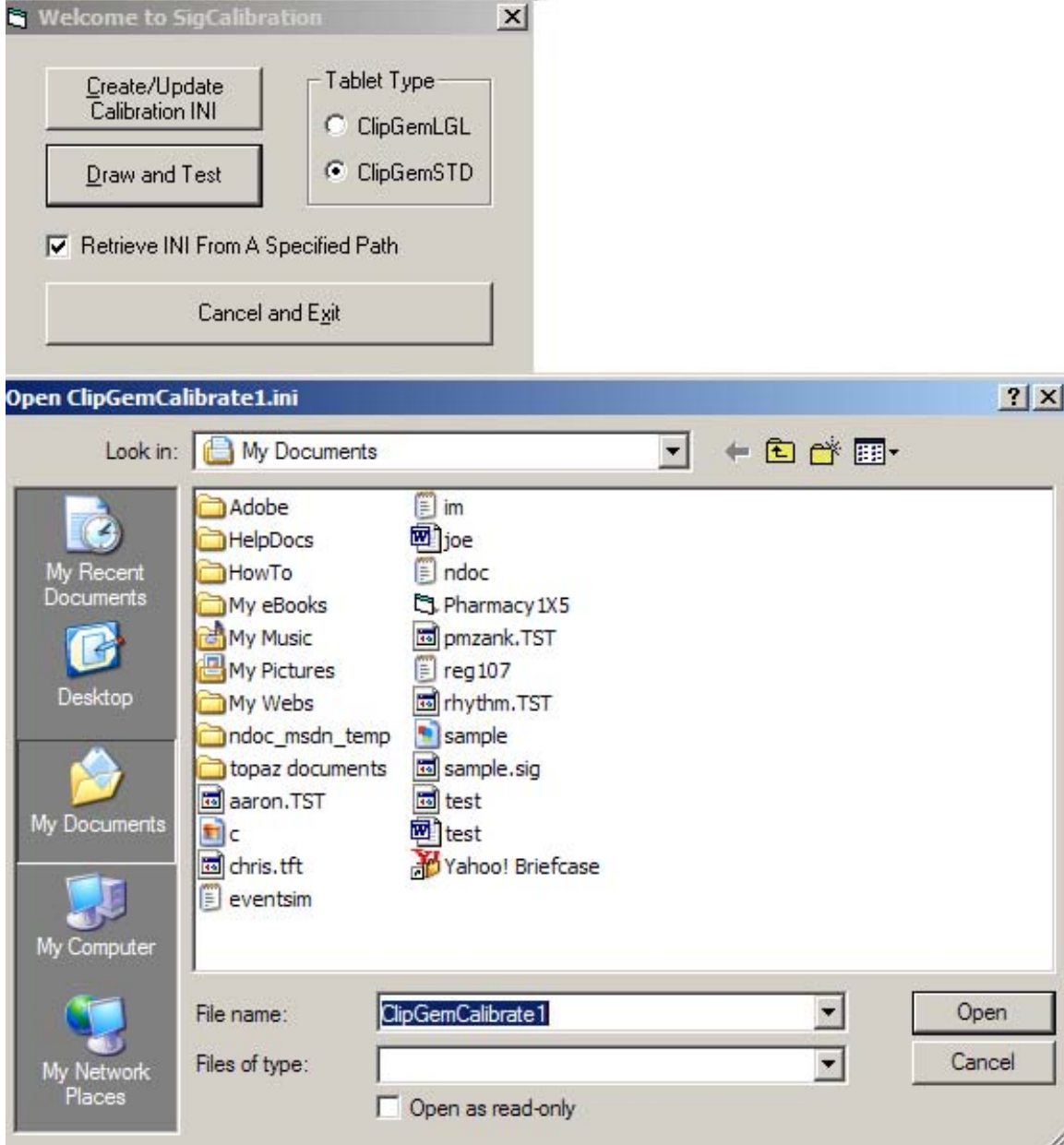
Sig Calibrate How To

Topaz Systems, Inc.  
650 Cochran Street, Unit 6  
Simi Valley, CA, 93065  
©1995-2005, all rights reserved, US patent 6,307,955, and pending

[www.topazsystems.com](http://www.topazsystems.com)

tech support: 805 520-8286

support@topazsystems.com



<http://www.topazsystems.com>